

DUMA



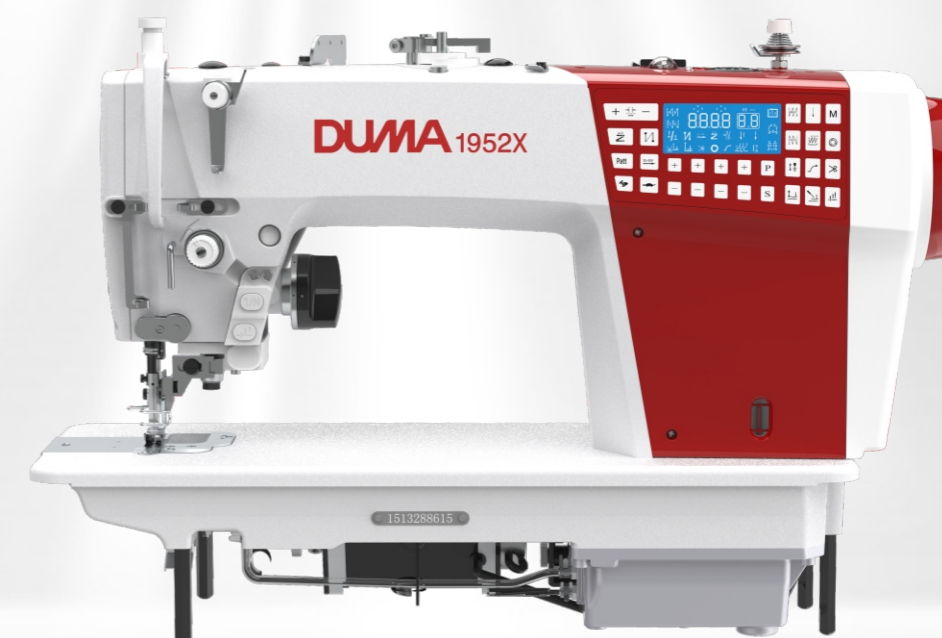
浙江杜马缝纫机股份有限公司

ZHEJIANGDUMASEWINGMACHINE CO.,LTD.

地址：浙江省台州市椒江区机场南路58号

电话：0576-89086969 传真：0576-89086999

网址：www.cnduma.com



1952X

带侧切刀步进三驱平缝机

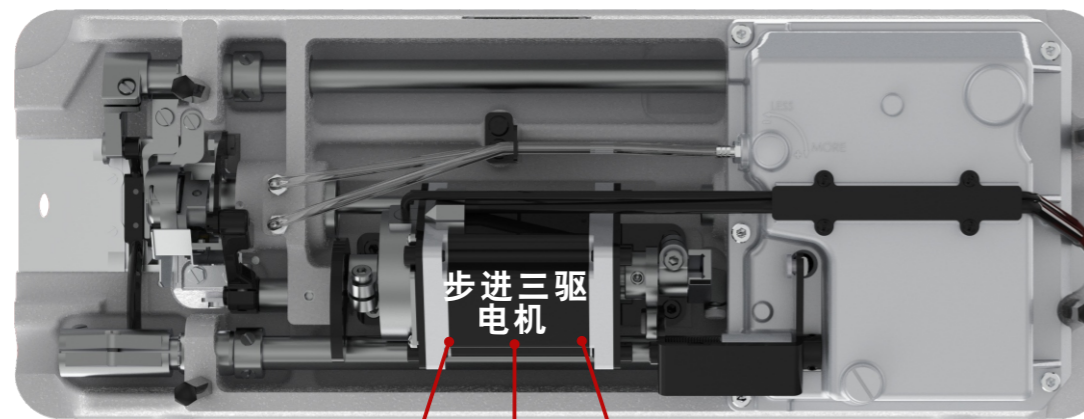
3 Drive Stepping motor lockstitch sewing machine with side cutter



带侧切刀 步进三驱平缝机

3 Drive Stepping motor
lockstitch sewing machine
with side cutter

Brand new product



控针距

Control stitch length

剪线

Trimming

抬压脚

Presser foot up/down

步进三驱
电机

- 颠覆性革新设计，一个步进电机控制针距、剪线以及抬压脚功能，自动倒缝。
- 采用旋钮开关式切换机构，可以方便地在普通平缝和切边平缝之间切换，针对不同质地和层厚和切缝宽度的面料都能轻松胜任。

Subversive innovative design, a stepper motor controls the needle distance, cutting thread and presser foot lift function, automatic reverse stitching.

Adopt rotary switcher device, users can change sewing model from normal to edge cutting easily.

Different material, thickness and edge width are all suitable.



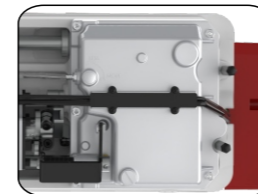
可离合式切刀开关：实现切布与非切布缝制功能切换。

Clutchable knife switch：
realize the switching of cutting and non-cutting sewing functions.



电子膝靠：不改变工人的操作习惯，实际轻松抬压脚。

Electronic foot pedal：
it's easy to lift the presser foot and no need to change worker's sewing habit.



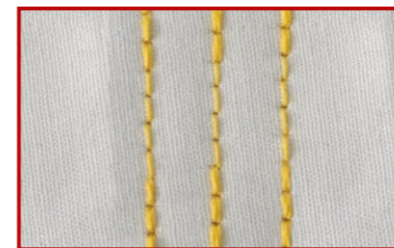
密封油箱设计：避免油污造成的缝料污染，同时减小整机运作时的噪音。

Sealed oil tank：
it can avoid cloth dirty from oil, meantime to reduce noise during working.



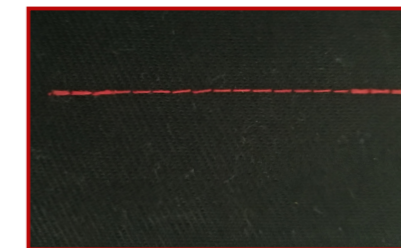
电子松线：相比传统机械松线更加稳定可靠。

Electronic thread tension device：
compare with mechanical wire, it's more stable.



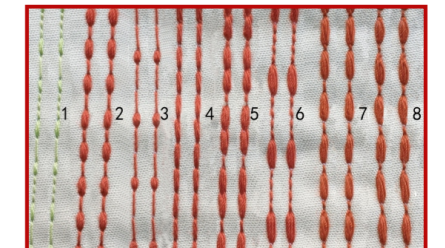
高品质加固缝

High quality reinforced seam



前、后密针缝

Front and back close stitch



花样缝

8 different pattern stitches