

DUMA



浙江杜马缝纫机股份有限公司
ZHEJIANG DUMA SEWING MACHINE CO., LTD.
地址：浙江省台州市椒江区机场南路58号
电话：0576-89086969 传真：0576-89086999
网址：www.cnduma.com



1952

双步进智能带侧切刀平缝机

Double Step Smart Lockstitch Sewing Machine with Side Knife

DM-1952

双步进智能带侧切刀平缝机

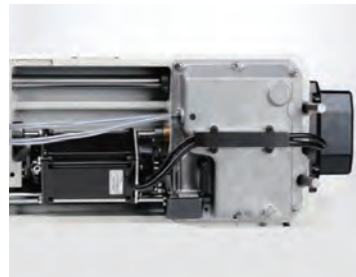
Double Step Smart Lockstitch Sewing Machine with Side Knife

操作屏解析

+	-	加减键	Plus or minus key
		电机运行速度调节	Motor speed adjustment
P		功能键	Function keys
		图案花样	Pattern suture button
Patt		花样编辑	Stitch pattern design
		前加固	Start back-tacking
		自由缝	Free sewing
M		M键	Multi-section sewing
		停针位	Set the needle posting shortcut
		剪线	Trimming
		手动抬压脚键	Manual presser foot liftnh setting
S		确定键	OK key
		漂亮缝	Pretty sewing set key
		段式缝花样自编模式	Segmented self seam pattern mode
		后加固	End back-tacking
		W固缝模式按键	W back-tacking key
		触发自动	one-shot-sewing
		软启动	Soft start to set shortcut keys
		中间抬压脚	Stop presser foot
		补针键	Lift or fill up needle



功能特点



步进电机双向控制：

步进电机控制抬压脚与剪线（专利技术）：方便压脚高度调整、压脚升降无噪声，剪线无噪声

Stepper motor bidirectional control
Stepping motor controls presser foot lifting and thread trimming (patented technology): convenient for presser foot height adjustment, presser foot lifting and lowering noiseless, no noise for thread trimming



多功能补针开关：

可实现变针距补针功能

Multi-function needle compensation switch
It can realize the function of changing stitch length to make up the needle



多键位操作面板：

常用功能一目了然，简化操作逻辑

Multi-key operation panel
Common functions are clear at a glance, simplifying operation logic

无轴承主轴伺服马达：

直接使用主轴作为电机轴，无需用联轴器连接，主轴刚性好、力矩轻，电机运转声音轻

Bearingless spindle servo motor
The main shaft is directly used as the motor shaft, no need to use a coupling to connect, the main shaft has good rigidity, light torque, and the motor runs lightly.



可离合式切刀开关：

实现切布与非切布缝制功能切换

Clutchable knife switch
Realize the switching of cutting and non-cutting sewing functions



前、后加密缝功能：

缝制起始/终止端锁小针距线迹，有效缩短留在缝料上的线头长度，防止线头松散

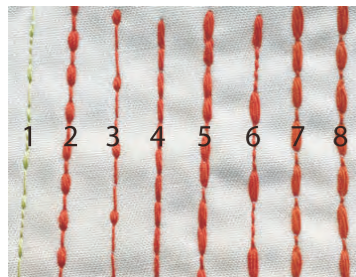
Front and back encrypted sewing function
Lock the small stitches at the sewing start/end end, effectively shorten the length of the thread left on the sewing material to prevent the thread from falling out



高品质的加固缝线迹：

步进电机控制针距与倒缝：针距精准、倒缝无噪声

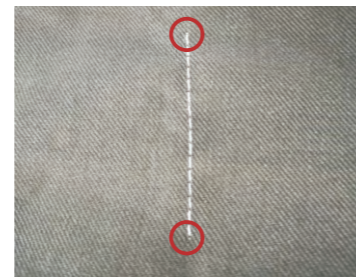
high-quality start-end reverse sewing:
Stepping motor controls the stitch length and reverse stitching: precise stitch length, no noise in reverse stitching



可编辑花样缝：

由步进马达控制，可以自己设定产生花样线迹，实现刀车与花样平缝机的完美融合

Editable pattern stitch
Controlled by a stepping motor, you can set your own pattern stitches to achieve the perfect integration of the knife car and the pattern lockstitch sewing machine



电子膝靠：

比传统机械膝靠更加轻柔，减小操作负荷

Electronic knee rest
Softer additional mechanical knees, reducing operating load

