

DUMA 杜马

POWER 系列

双步进电子送料平缝机

Double step motor Electronic feed lockstitch sewing machine

1968PRO



匠心制作, 所以精致

Crafty, so exquisite

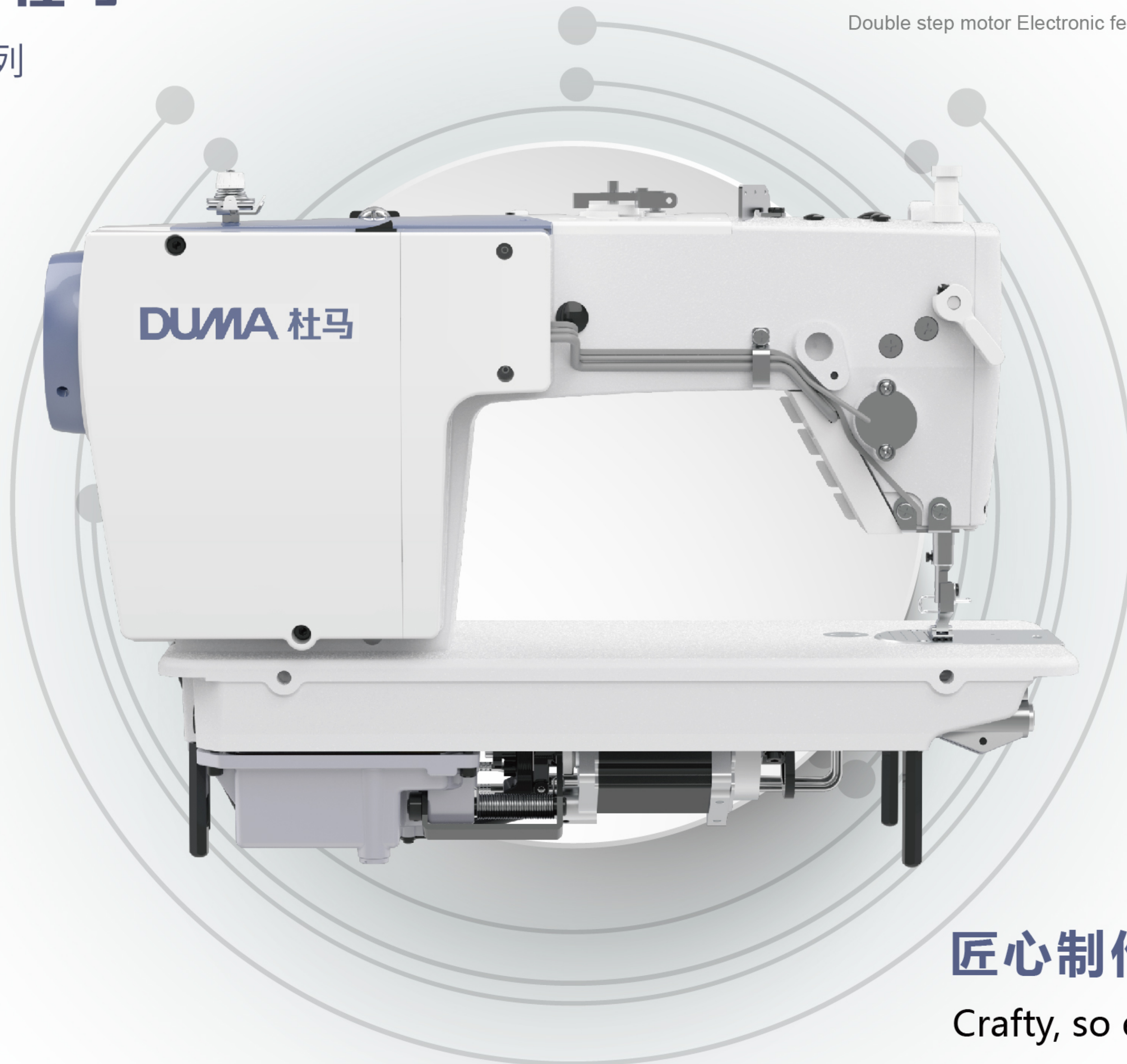
DUMA 杜马

POWER 系列

双步进电子送料平缝机

Double step motor Electronic feed lockstitch sewing machine

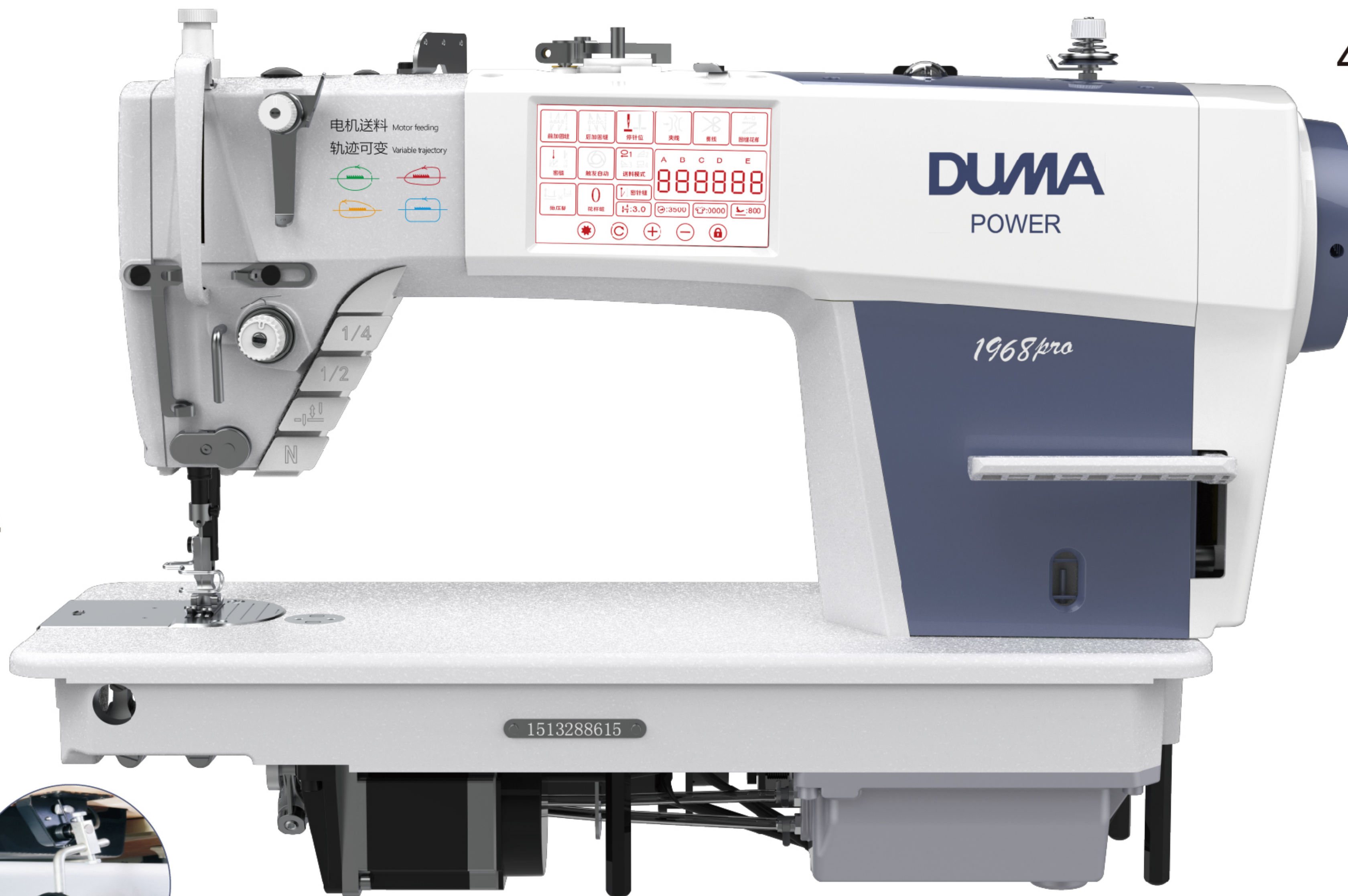
1968PRO



匠心制作, 所以精致

Crafty, so exquisite

1968PRO基本配置



4.3寸液晶屏

通轴传动

倒缝扳手

可视油窗

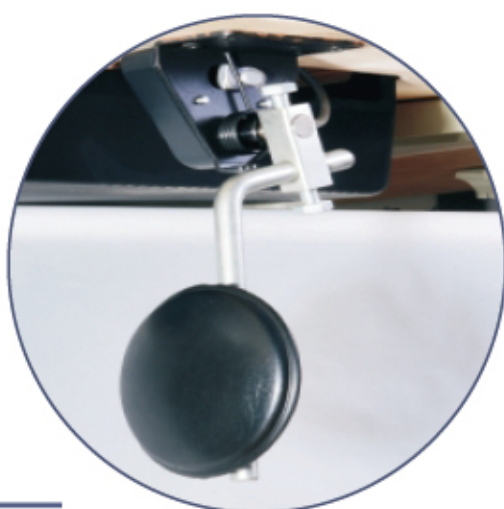
密封油盒

四键按键

超耐磨针杆

LED照明灯

电子膝靠



■ 超耐磨针杆

DLC needle bar

采用黑金刚针杆，可有效减少漏油并极大限度延长使用寿命。

Adopt DLC needle bar, reduce oil leakage and greatly extend using life.

■ LED照明灯

LED light

触手可及，亮度可调。

Convenient & with adjustable brightness.

■ 四键按钮

Four buttons

配有四个按键，方便进行加固、补针(补1针，补1/2针，1/4针)倒缝操作。

With four button it is convenient to reinforce and bartacking, fill needle(1,1/2,1,4).

■ 4.3寸液晶屏

4.3 inch LCD screen

液晶显示触摸屏功能齐全，操作简便明了。

The LCD touch screen has complete functions and the operation is simple and clear.

■ 密封油盒

Sealed oil tank

清洁缝纫,避免油污造成的缝料污染,同时可减小整机运作时的噪音;

Cleaning sewing, it avoid cloth dirty from oil, meantime reduce noisy when machine working.

■ 可视油窗

Visual oil window

可以确认油的剩余用量。

It's easy to confirm the amount of the remaining oil.

■ 倒缝扳手

Reverse feed lever

通过倒回针扳手对缝制针距进行微调,进一步提升缝制品质。

with the reverse feed level to adjust the sewing stitch, further improve the sewing quality.

■ 电子脚靠

Electronic footrest

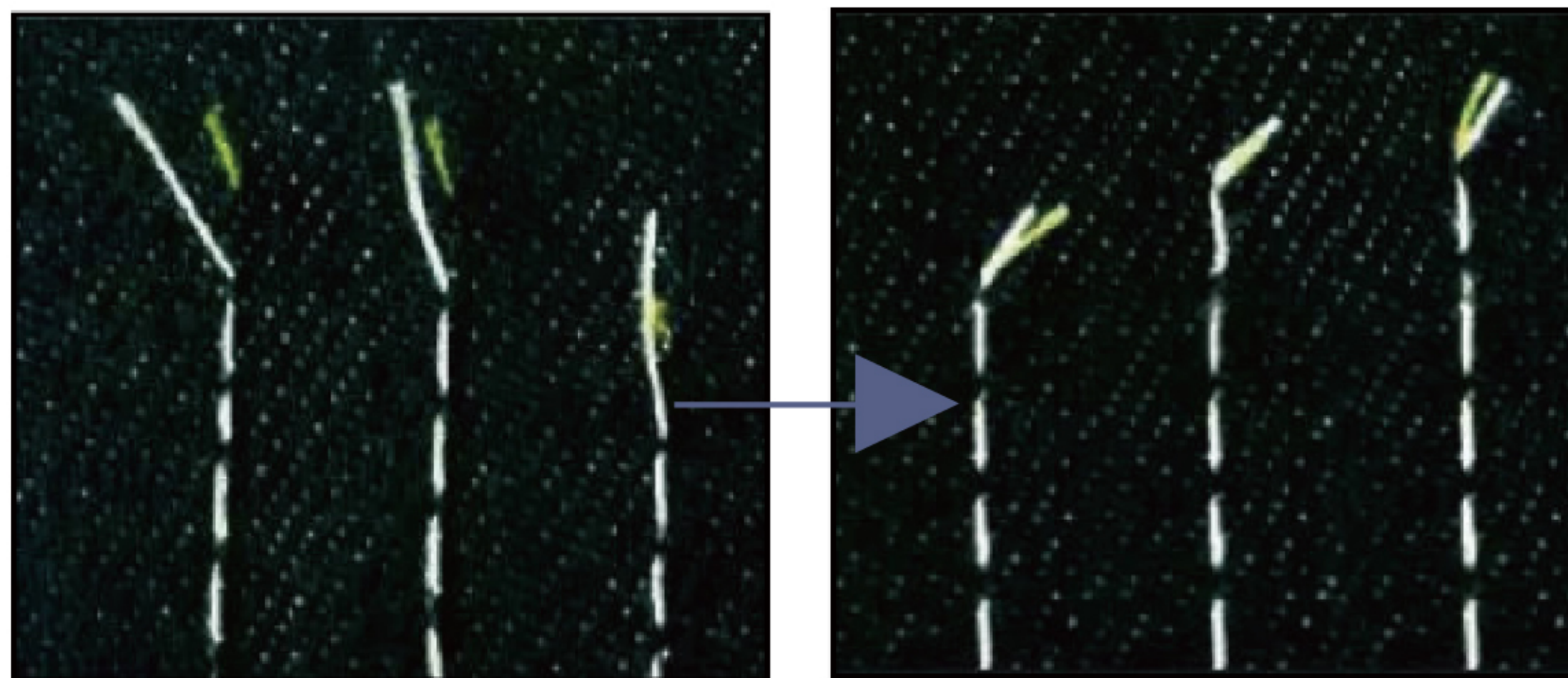
不改变工人的操作习惯,实现轻松抬压脚。

It easy to lift the presser foot and no need change worker's sewing habit.



DM1968PRO (DB×1)#7~#16 0-5 6-10 ★ ★ ★ ★ - ★ ★ ★ 4500 620x280x545 44.1/38

1968PRO性能展示



①

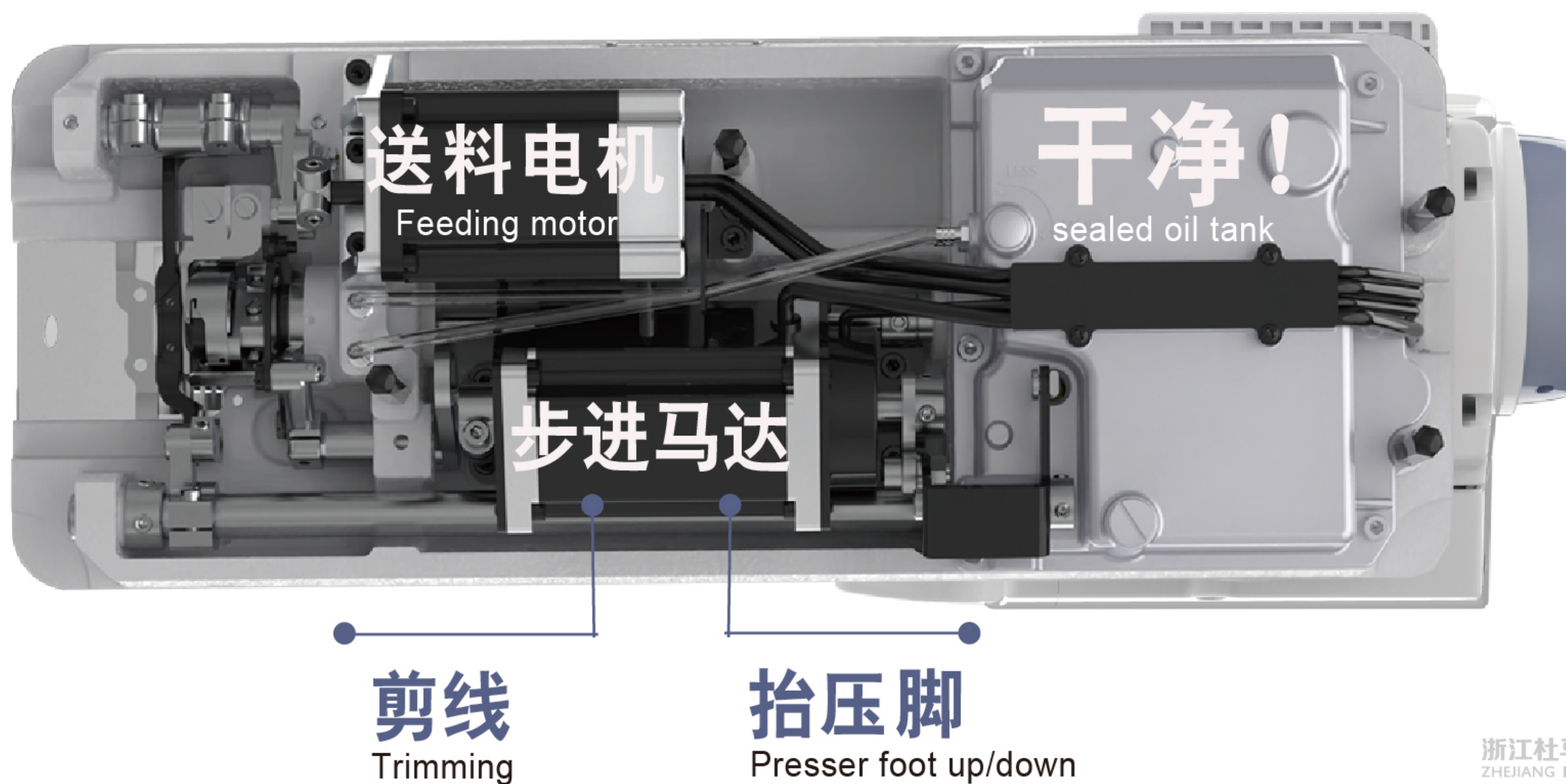
短线头:采用电机驱动的双动刀剪线机构,可在机针正下方完成剪线,缝纫后的线头最短可达3mm,可有效减少人工剪线的工作量。

Short trimmer : double round knife trimmer system can realize the thread $\leq 3\text{mm}$ after trimming, it can effectively reduce the workload.

② 电机直接送料,缝纫线迹稳固精美,适用于多种布料。
Electronic feed ,suit for various fabrics, and the stitch is beautiful.

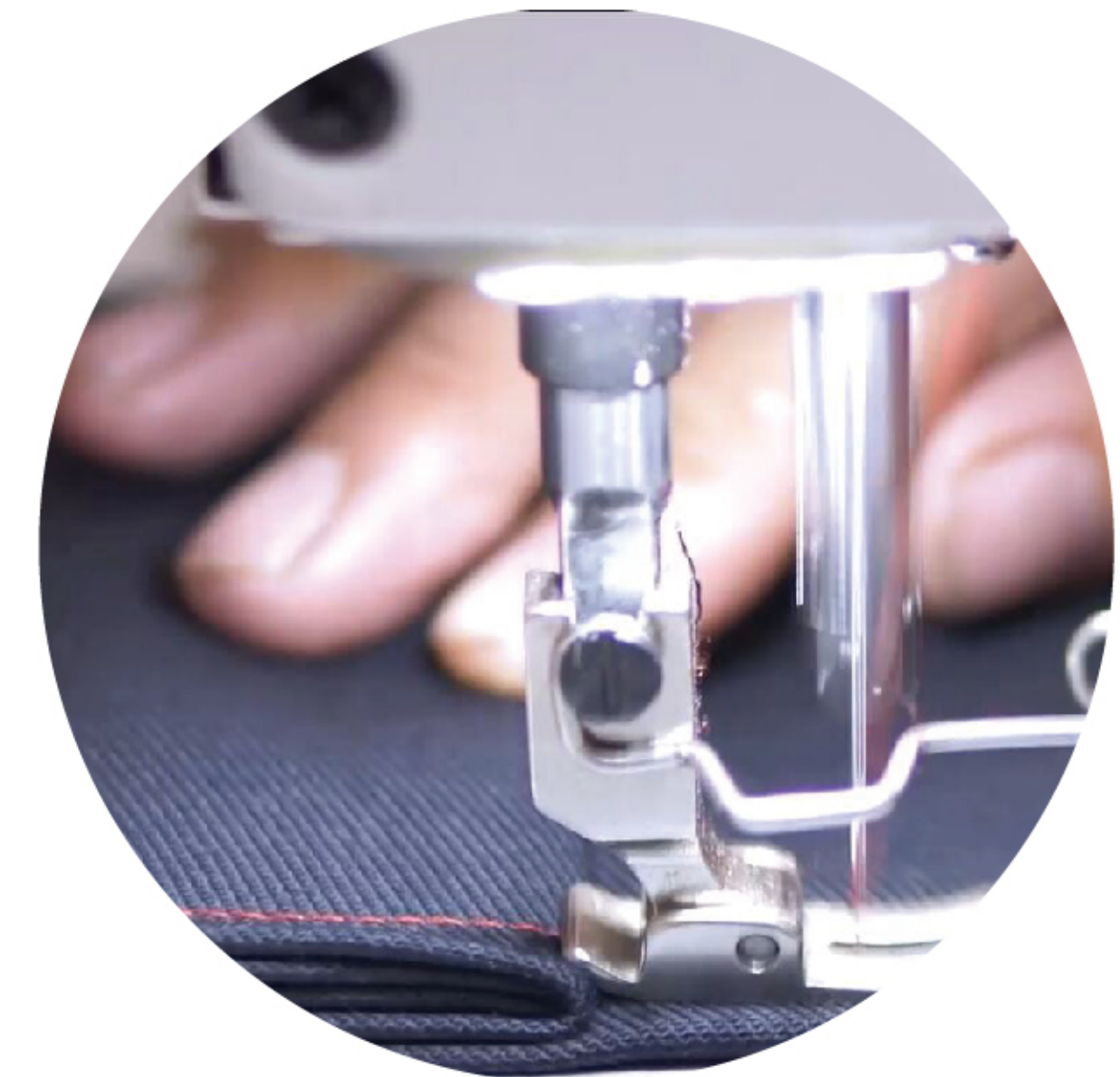
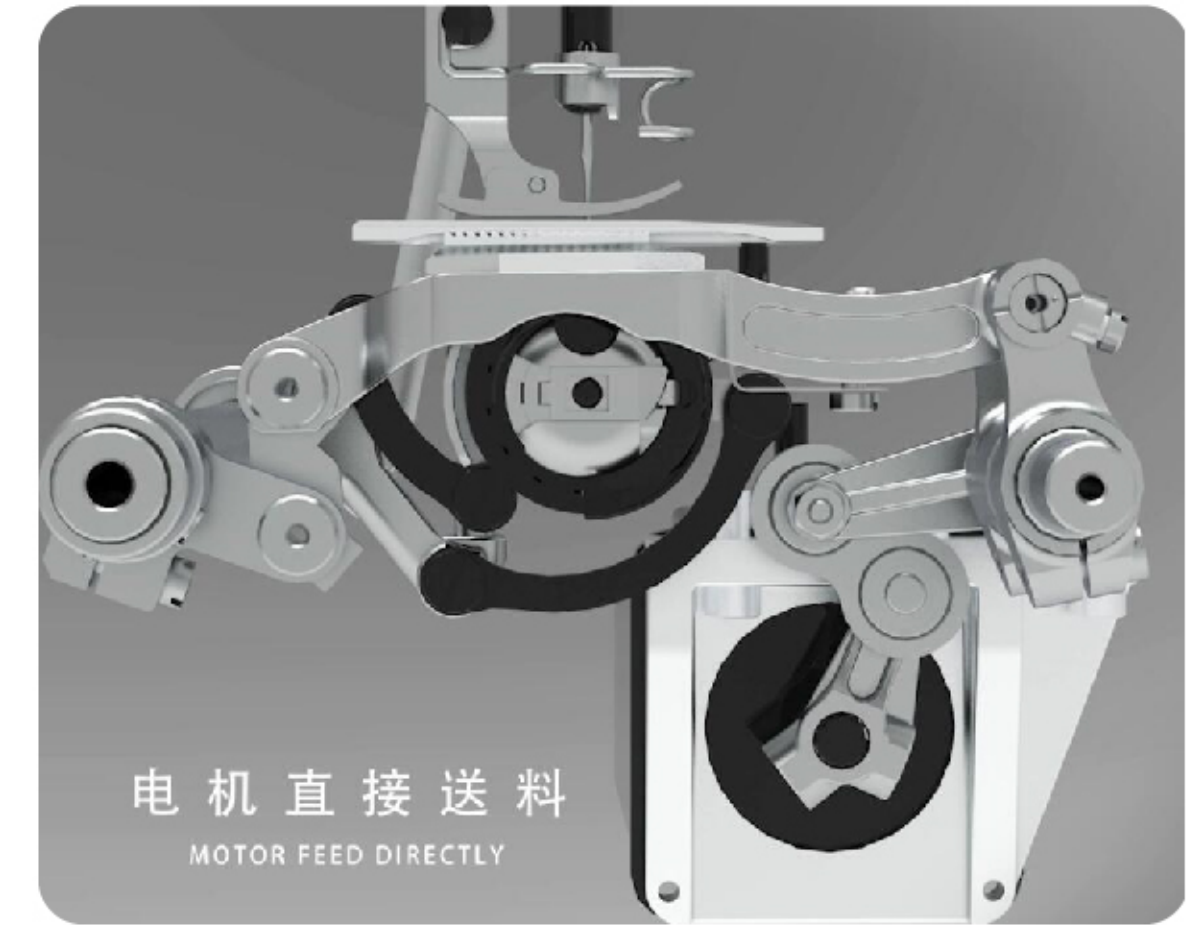
③ 步进马达同时控制剪线和抬压脚,可靠的切线机构,剪线稳定,抬压脚声音轻柔。

The step motor can both control trimmer system and presser foot , to make the stable trimmer and quiet presser foot.



★ 1968PRO 四种轨迹可变

Variable trajectory



电子送料 厚薄通吃！

Electronic feed ,thin/thick all farbic are suit!

NEW SERIES FULL OF POWER

Inspired and unique design appearance
with excellent practical performance.



國貨必須
自強 



浙江省台州市椒江区机场南路58号
No. 58, Airport South Road, Jiaojiang District,
Taizhou City, Zhejiang Province



电话/Tel: +86-576-89086976/86
传真/Fax: +86-576-89086979



网络/Web: www.cnduma.com
E-mail: sales@cnduma.com