

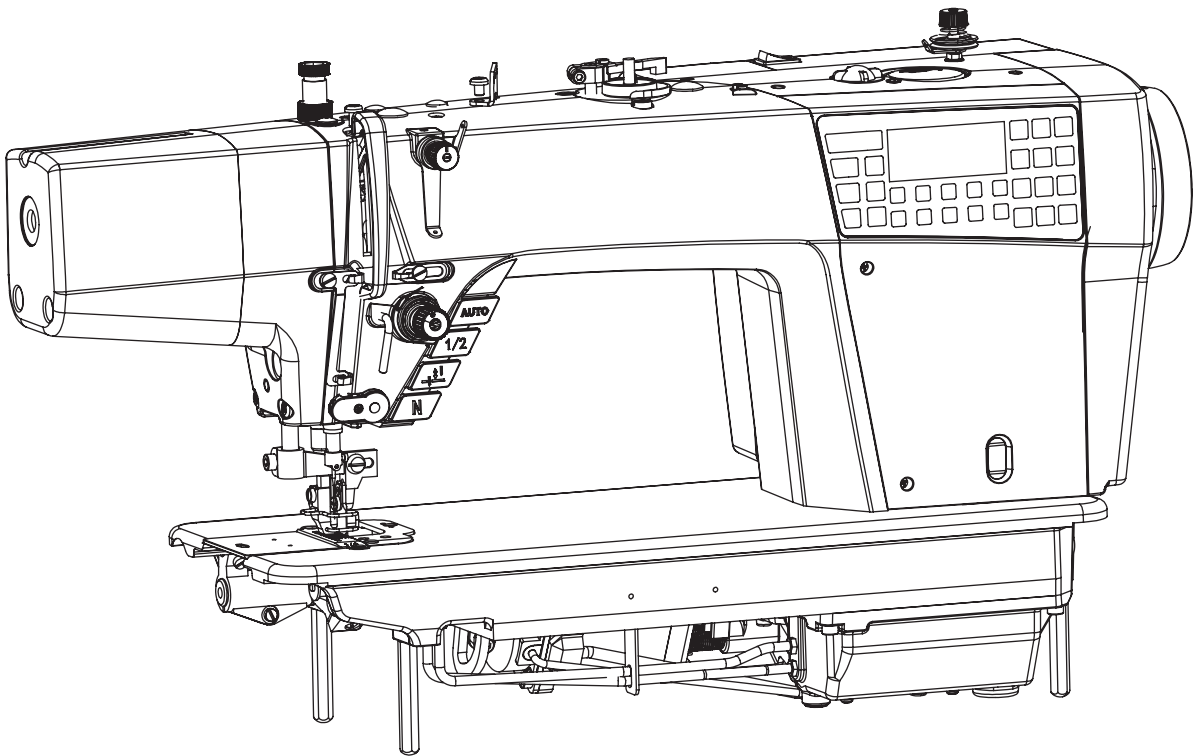
# PARTS BOOK

---

在使用缝纫机之前请阅读本使用说明书。  
请将本使用说明书放在便于查阅的地方保管。

---

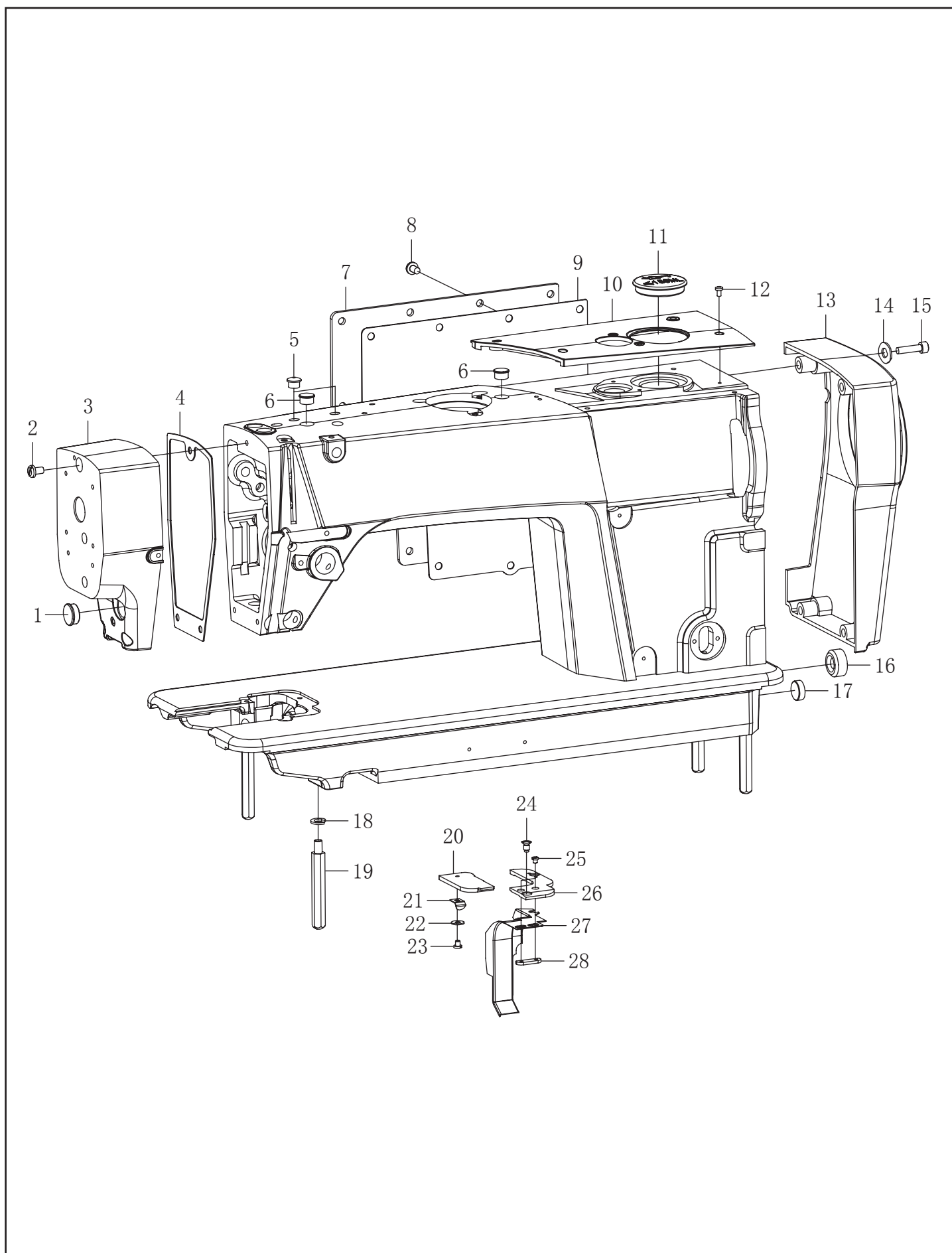
## 电子侧切刀步进三驱平缝机



# 目 录

1. 机体部分/Machine body .....	2
2. 上轴装置/Upper shaft mechanism .....	4
3. 压脚装置/Presser foot mechanism .....	8
4. 送料装置/Feed mechanism components.....	12
5. 旋梭装置/Rotary hook mechanism.....	14
6. 供油润滑装置/Lubrication.....	16
7. 穿线装置/Threading mechanism.....	20
8. 切线装置/Thread trimmer mechanism .....	22
9. 切刀装置/Cutter assembly .....	24
10. 倒缝开关装置/Quick reverse switch mechanism.....	26
11. 控制装置/Control components.....	26
12. 附件/Accessories .....	28

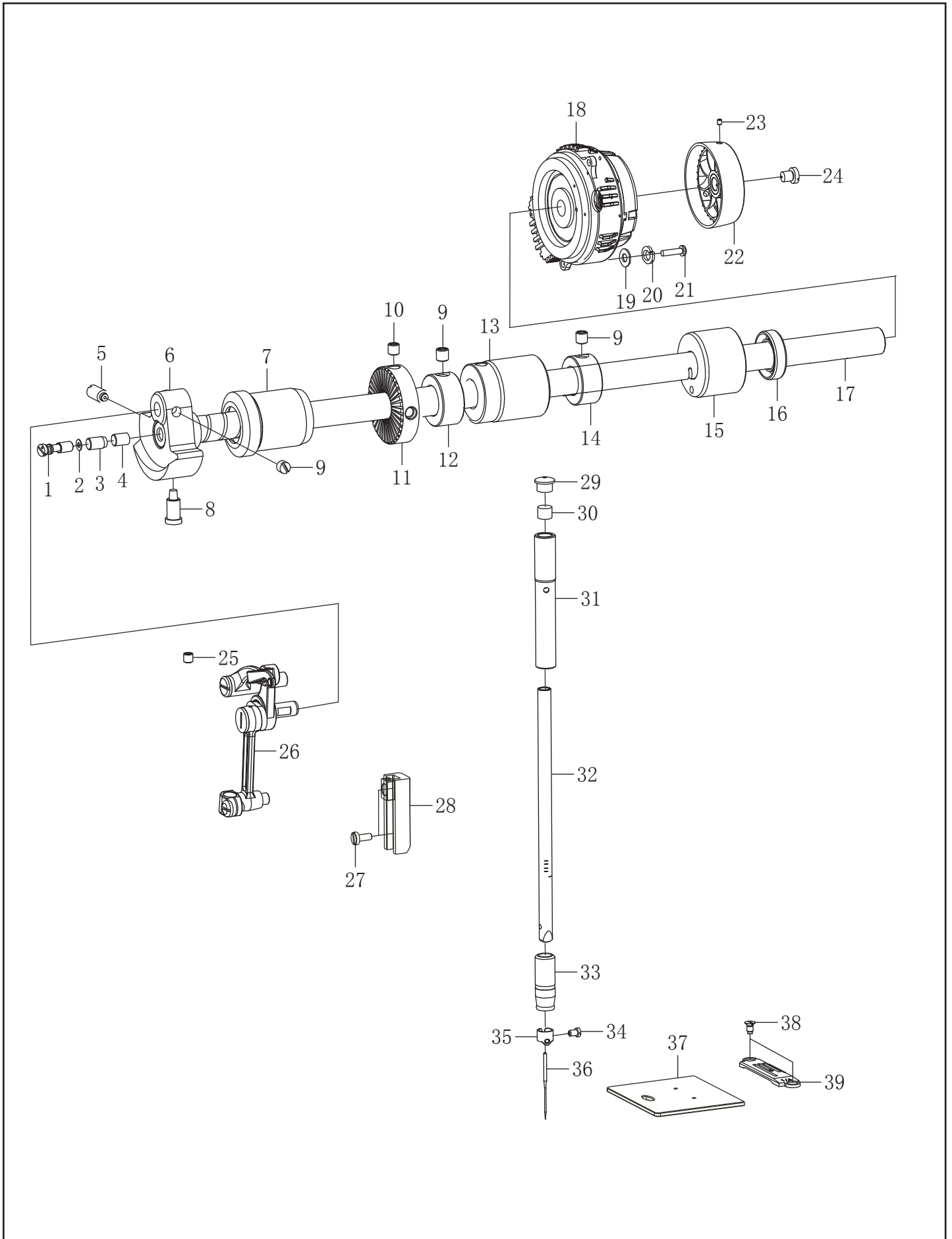
# 1. 机体部分/Machine body



# 1. 机体部分/Machine body

序号	图号	数量	名称	NAME OF PARTS
1	115010701	1	橡皮塞 15.5	RUBBER CAP 15.5
2	101062701	3	螺钉SM4. 76×28-12	螺钉SM4. 76×28-12
3	152410201	1	面板	FACE PLATE
4	168012301	1	面板垫	FACE PAD
5	115011401	2	橡皮塞 8.5	RUBBER CAP 8.5
6	101011001	2	橡皮塞 12.5	RUBBER CAP 12.5
7	115010401	1	后盖板	REAR COVER
8	062501016	9	螺钉 M5×10	SCREW PAN M5×10
9	115010501	1	后盖板垫	GASKET
10	168012001	1	顶盖	UPPER COVER
11	168010901	1	橡皮塞 37.8	RUBBER CAP 37.8
12	168012501	5	螺钉 M3×8	SCREW PAN M3×8
13	119012101	1	电机罩	MOTOR COVER
14	025050132	4	垫片	WASHER
15	018502032	4	螺钉 M5×20	SCREW PAN M5×20
16	101011401	1	橡皮塞 21	RUBBER CAP 21
17	125013001	2	橡皮塞 15.2	RUBBER CAP 15.2
18	028060246	4	弹簧垫圈 T6	SPRING WASHER T6
19	168011701	4	底板支柱	FLOOR SUPPORT
20	152205101	1	针板导屑口盖板	CHIP GUIDE PLATE
21	152205201	1	导屑口盖板簧	CHIP FLAP SPRING
22	025040132	1	垫片4	WASHER 4
23	152205301	1	导屑口盖板螺钉	SCREW PAN
24	115023501	2	螺钉SM4. 37×40-6	SCREW PAN SM4. 37×40-6
25	152205001	2	针板导屑罩螺钉	SCREW PAN
26	152204501	1	针板挡板	NEEDLE PLATE BAFFLE
27	152204801	1	针板导屑罩	NEEDLE CHIP GUIDE COVER
28	152204901	1	针板导屑罩垫块	PIN GUIDE HOOK PAD

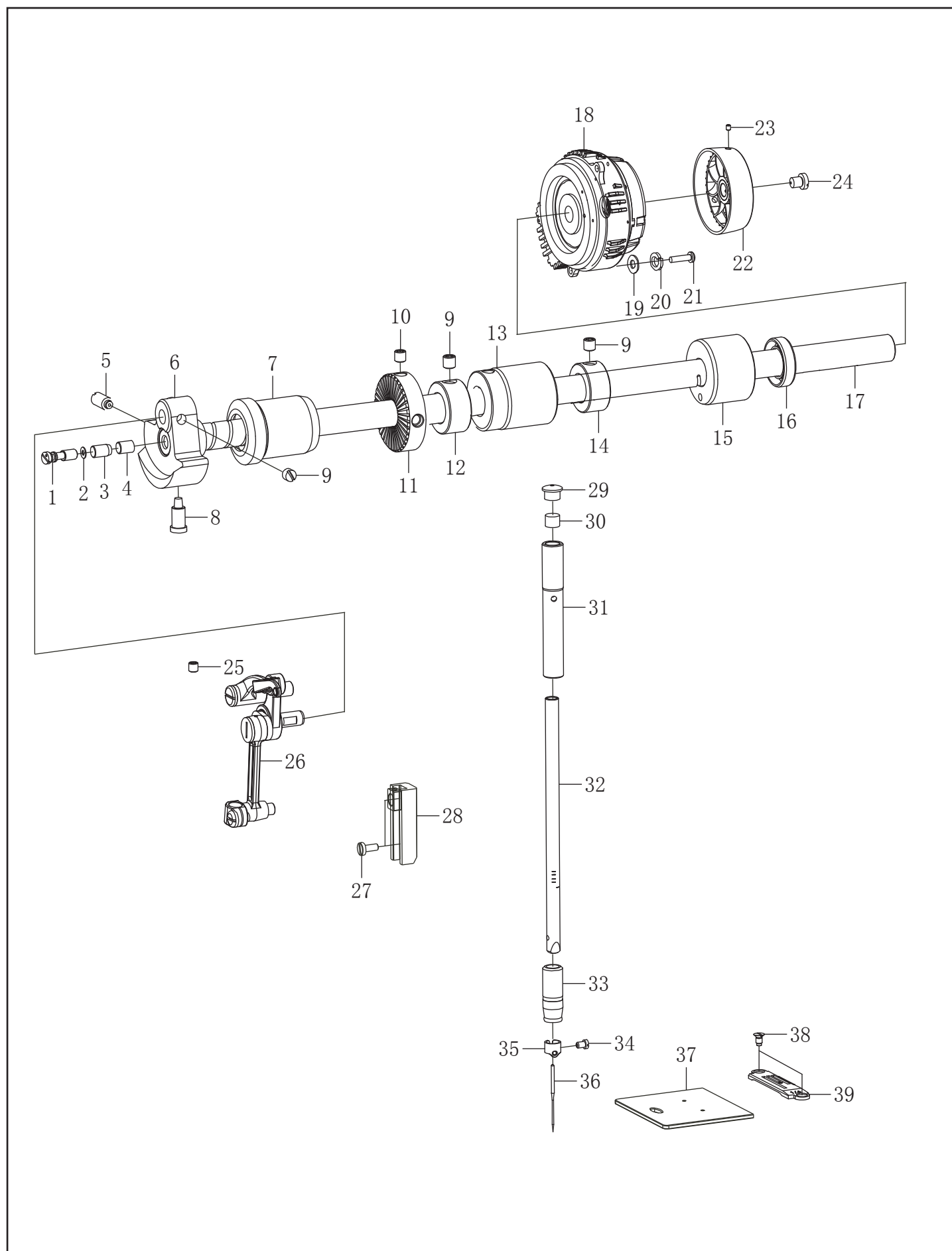
## 2. 上轴装置/Shaft mechanism



## 2. 上轴装置/Upper shaft mechanism

序号	图号	数量	名称	NAME OF PARTS
1	101034201	1	油量偏心销	SCREW PAN SM7.14
2	115081601	1	O型圈6.5×1.8	O-RING 6.5×1.8
3	101034301	1	油量销套	OIL PIN SETS
4	101034102	1	上轴油毡	UPPER SHAFT LINOLEUM
5	101031601	1	螺钉 SM7.14	SCREW PAN SM7.14
6	125031501	1	针杆曲柄	COUNTER WEIGHT
7	168020501	1	上轴前轴套	MAIN SHAFT BUSHING FRONT
8	101031801	1	螺钉 SM7.14	SCREW PAN SM7.14
9	014770632	6	螺钉 SM6.35×40-6	SCREW PAN SM6.35×40-6
10	014500832	2	螺钉 M5×8	SCREW PAN M5×8
11	101032101	1	绕线驱动轮	BOBBIN WINDER DRIVING WHEEL
12	101032502	1	上轴挡圈	THRUST COLLAR
13	168020901	1	上轴中轴套	BUSHING INTERMSDIATE
14	101032501	1	上轴挡圈	THRUST COLLAR
15	168021101	1	上轴后轴套	MAIN SHAFT BUSHING READ
16	115024001	1	油封	OIL SEAL
17	168023801	1	上轴	MAIN SHAFT
18	168021302	1	主轴电机组件	SPINDLE MOTOR ASSEMBLY
19	025050132	3	垫片 M5	WASHER M5
20	028050246	3	弹簧垫圈 T5	SPRING WASHER T5
21	018501432	3	螺钉 M5×14	SCREW PAN M5×14
22	115025303	1	手轮	HANG WHEEL ASM
23	012501032	2	螺钉 M5×10	SCREW PAN M5×10
24	115025401	1	螺钉 SM8.73	SCREW PAN SM8.73
25	012061032	1	螺钉 M6×10	SCREW PAN M6×10
26	101031401	1	挑线杆组件	HREAD TAKE-UP LEVER ASM
27	115024601	2	螺钉 SM3.57	SCREW PAN SM3.57
28	101043701	1	滑块槽组件	SLIDE BLOCK SLOT ASSY
29	115010801	1	橡皮塞 8.5	RUBBER CAP 8.5
30	115025601	1	油毡	FELT
31	101040301	1	针杆上套	NEEDLE BAR BUSH U
32	152206302	1	针杆	NEEDLE BAR

## 2. 上轴装置/Upper shaft mechanism

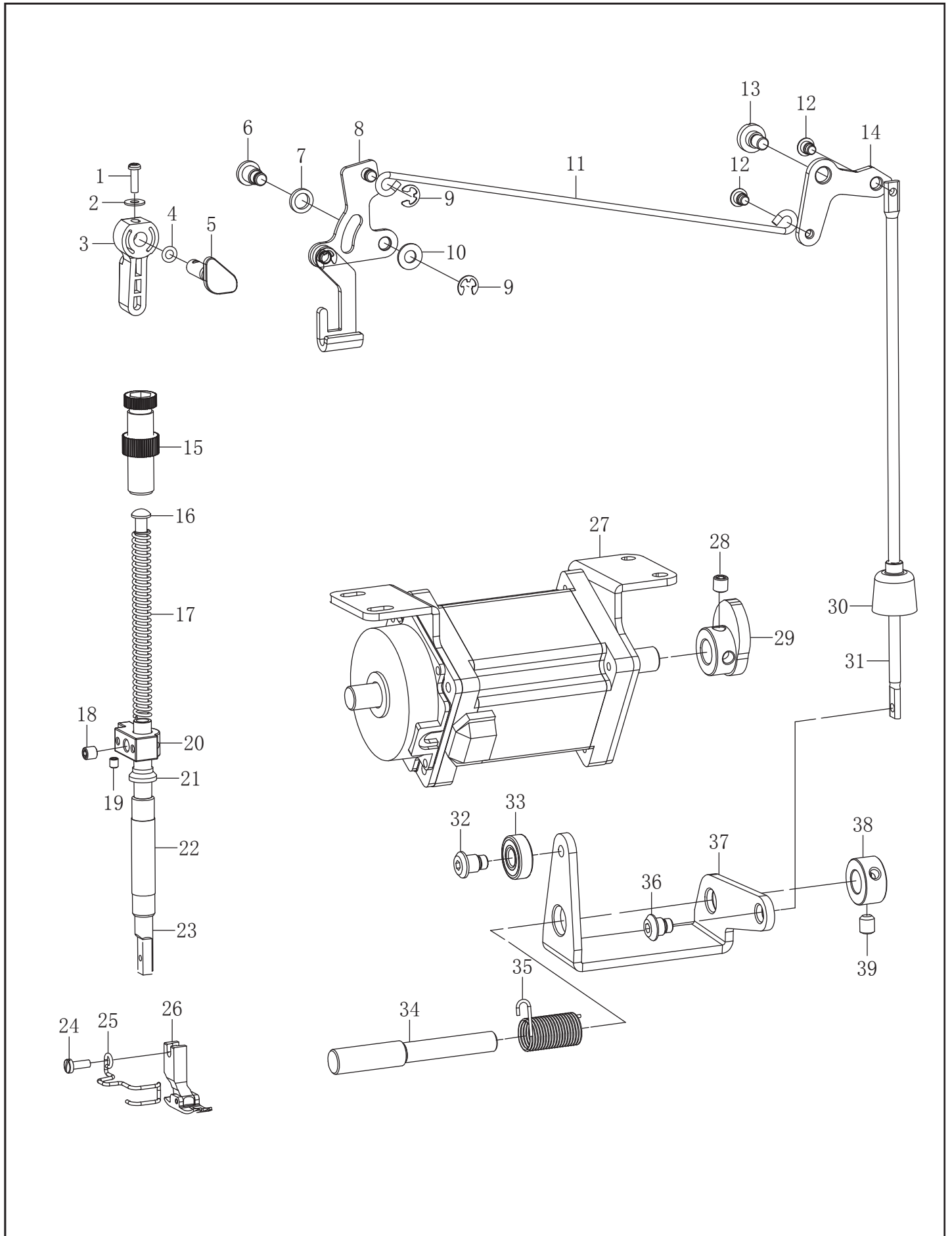


## 2. 上轴装置/Upper shaft mechanism

序号	图号	数量	名称	NAME OF PARTS
33	101040901	1	针杆下套	NEEDLE BAR BUSH D
34	101041001	1	螺钉SM3. 18	SCREW PAN SM3. 18
35	152206601	1	针杆过线环	NEEDLE BAR THREAD GUIDE
36	115024101	1	机针 DB×1 #14	NEEDLE DB×1 #14
37	101011801	1	推板组件	SLIDE PLATE COMPONENTS
38	115023501	2	螺钉 SM4. 37	SCREW SM4. 37
39	152204402	1	针板 3/16	THREAD PLATE 3/16



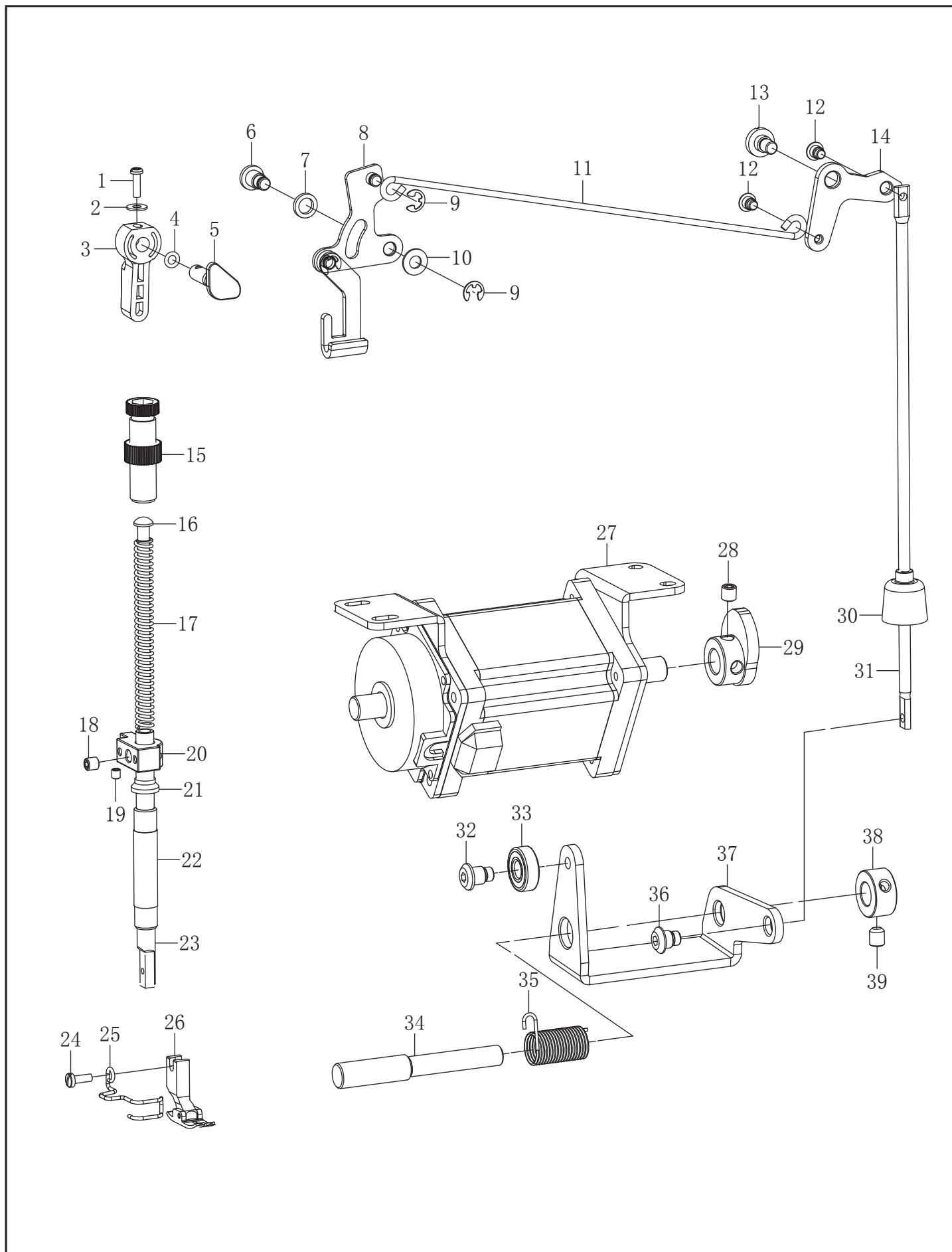
### 3. 压脚装置/Presser foot mechanism



### 3. 压脚装置/Presser foot mechanism

序号	图号	数量	名称	NAME OF PARTS
1	101054501	1	螺钉SM3.57	SCREW PAN SM3.57
2	101054601	1	垫片3.7	WASHER 3.7
3	168030301	1	抬压脚扳手	LIFTING LEVER
4	081004070	1	O型圈P4	O-RING P4
5	102050601	1	抬压脚凸轮轴	PRESS FOOT LIFTER CAM ASM
6	101052001	2	前杠杆螺纹销	LINK SHAFT
7	101052101	2	防油橡胶垫	WASHER
8	168031001-1	1	抬压脚前杠杆组件	HANK LIFTER LINK
9	048050342	3	卡簧E5	RING E4
10	101056301	2	垫圈6.35	WASHER 6.35
11	168030901	1	抬压脚拉杆	LIFTING LEVER LINK
12	115034301	2	轴位螺钉SM4.76	SCREW PAN SM4.76
13	115034501	1	轴位螺钉SM6.35	SCREW PAN SM6.35
14	115034601	1	膝控提升手杆	LIFT KNEE CONTROL LEVER
15	168031501	1	调压螺钉组件	PRESSURE REGULATING SCREW
16	101050301	1	调压导杆	PRESSER GUIDE BAR
17	125050401	1	调压簧	PRESSER SPRING
18	168031901	1	螺钉SM6.35×40-10	SCREW PAN SM6.35×40-10
19	115034201	1	抬压脚减震垫	PRESSER FOOT CUSHIONS
20	168031801	1	压紧杆导架	NEEDLE BAR GUIDE BAACKET
21	101050901	1	压杆套防油圈	SHOCK PAD
22	101051001	1	压杆衬套	PRESSER BAR BUSHING LOWER
23	152205501	1	压杆	PRESSER BAR
24	115031001	1	螺钉SM3.57×40-10	SCREW PAN SM3.57×40-10
25	101051301	1	护指器	PROTECT SHELF
26	152206802	1	压脚 3/16	MPRESSER FOOT ASM 3/16
27	166201301	1	倒缝步进电机组件	BACKSEAM STEPPER MOTOR ASSY
28	012600636	2	螺钉M6×0.75-6	SCREW PAN M6×0.75-6
29	166201101	1	抬压脚凸轮	HAND LIFTER CAM
30	168033601	1	膝控提升杆橡皮塞	RUBBER CAP
31	168033701	1	抬压脚顶杆	CONNECTING ROD VERTICAL
32	166201001	1	轴承轴位螺钉SM4.76	SCREW PAN SM4.76

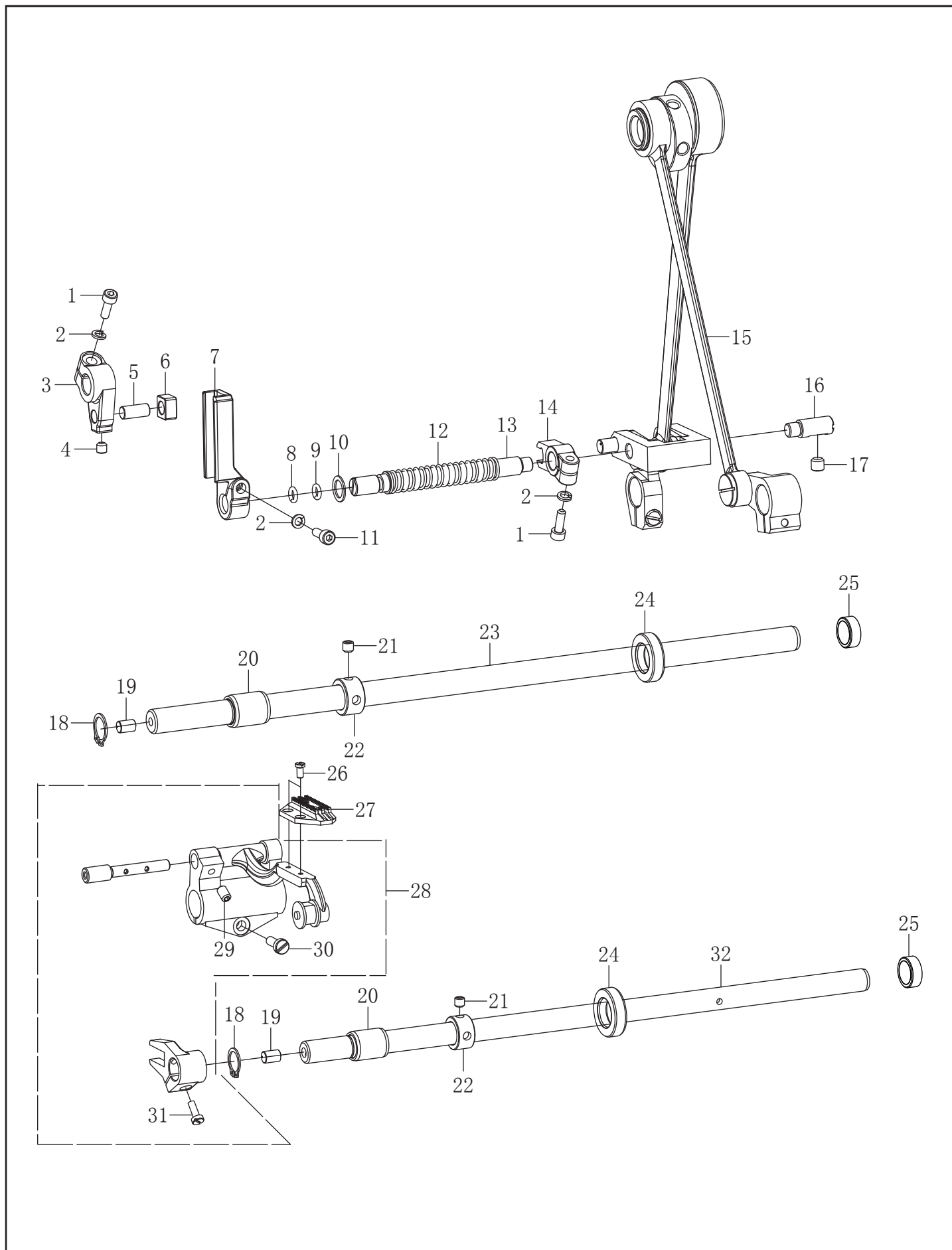
### 3. 压脚装置/Presser foot mechanism



### 3. 压脚装置/Presser foot mechanism

序号	图号	数量	名称	NAME OF PARTS
33	169034001	1	轴承	BEARING
34	166200902	1	抬压脚曲柄轴	PRESSER FOOT CRANK SHAFT
35	166201402	1	压脚复位簧	PRESS FOOT RESET SPRING
36	168031301	1	轴位螺钉SM4.76	SCREW PAN SM4.76
37	166200801	1	抬压脚驱动曲柄	PRESSER FOOT DRIVING CRANK
38	168033501	1	紧圈	SET SCREW COLLAR
39	012500632	2	螺钉M5×6	SCREW PAN M5×6

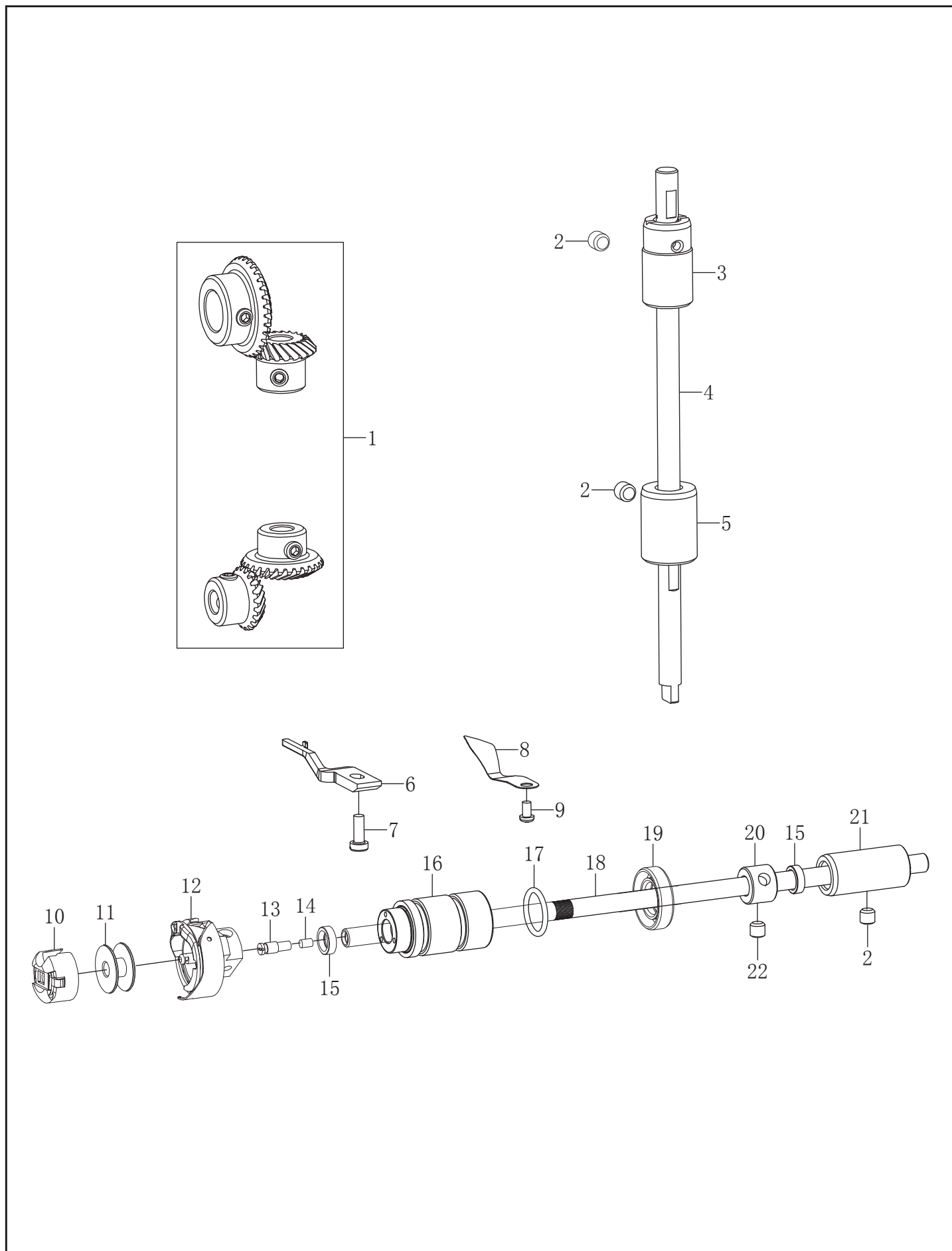
# 4. 送料装置/Feed mechanism components



#### 4. 送料装置/Feed mechanism components

序号	图号	数量	名称	NAME OF PARTS
1	01850142	2	螺钉 M5×14	SCREW PAN M5×14
2	028050246	3	弹簧垫圈 T5	SPRING WASHER T5
3	166200501	1	倒缝驱动曲柄	REVERSE SLIT DRIVE CRANK
4	012500536	1	螺钉 M5×5	SCREW PAN M5×5
5	166200601	1	驱动曲柄销	DRIVE THE CRANK PIN
6	166200402	1	针杆连接柱滑块	PIN ROD CONNECTING POST SLIDER
7	166200401	1	摆动导向曲柄	SWING GUIDE CRANK
8	166201501	1	O型圈8×1.8	O RING 8×1.8
9	115045001	1	O型密封圈12×2	O RING 12×2
10	166202801	1	垫圈9	WASHER 9
11	018501632	1	螺钉 M5×16	SCREW PAN M5×16
12	166202701	1	防油限位簧	OIL LIMIT SPRING
13	166200201	1	针距摆动轴	NEEDLE PITCH SWING AXIS
14	166200301	1	摆动座固定夹	SWING SEAT RETAINING CLAMP
15	166203501	1	大连杆总组件	BIG CONNECTING ROD TOTAL ASSY
16	168041301	1	切换器右销	SWITCHER RIGHT PIN
17	101032401	1	螺钉SM5.95	SCREW PAN SM5.95
18	048140142	2	卡簧 C14	RING C14
19	115082801	6	油毡	FELT
20	101063102	2	送布轴前轴套	FEED SHAFT FRONT SLEEVE
21	101063001	4	螺钉SM6.35	SCREW PAN SM6.35
22	101062901	2	送布轴挡圈	SET SCREW COLLAR
23	168042601	1	送布轴	FEED SHAFT
24	166201601	2	油封	OIL SEAL
25	125013001	2	橡皮塞15.2	RUBBER CAP 15.2
26	115047001	2	螺钉SM3.18	SCREW PAN SM3.18
27	152206901	1	送布牙 3/16	FEED DOG 3/16
28	101062101	1	牙架组件	DENTURE ASSEMBLY
29	101062601	1	螺钉SM4.37×40-7	SCREW PAN SM4.37×40-7
30	101062701	1	螺钉SM5.95	SCREW PAN SM5.95
31	101064001	1	螺钉SM4.37×40-12	SCREW PAN SM4.37×40-12
32	168043901	1	抬牙轴	TOOTH LIFTING SHAFT

# 5. 旋梭装置/Rotary hook mechanism

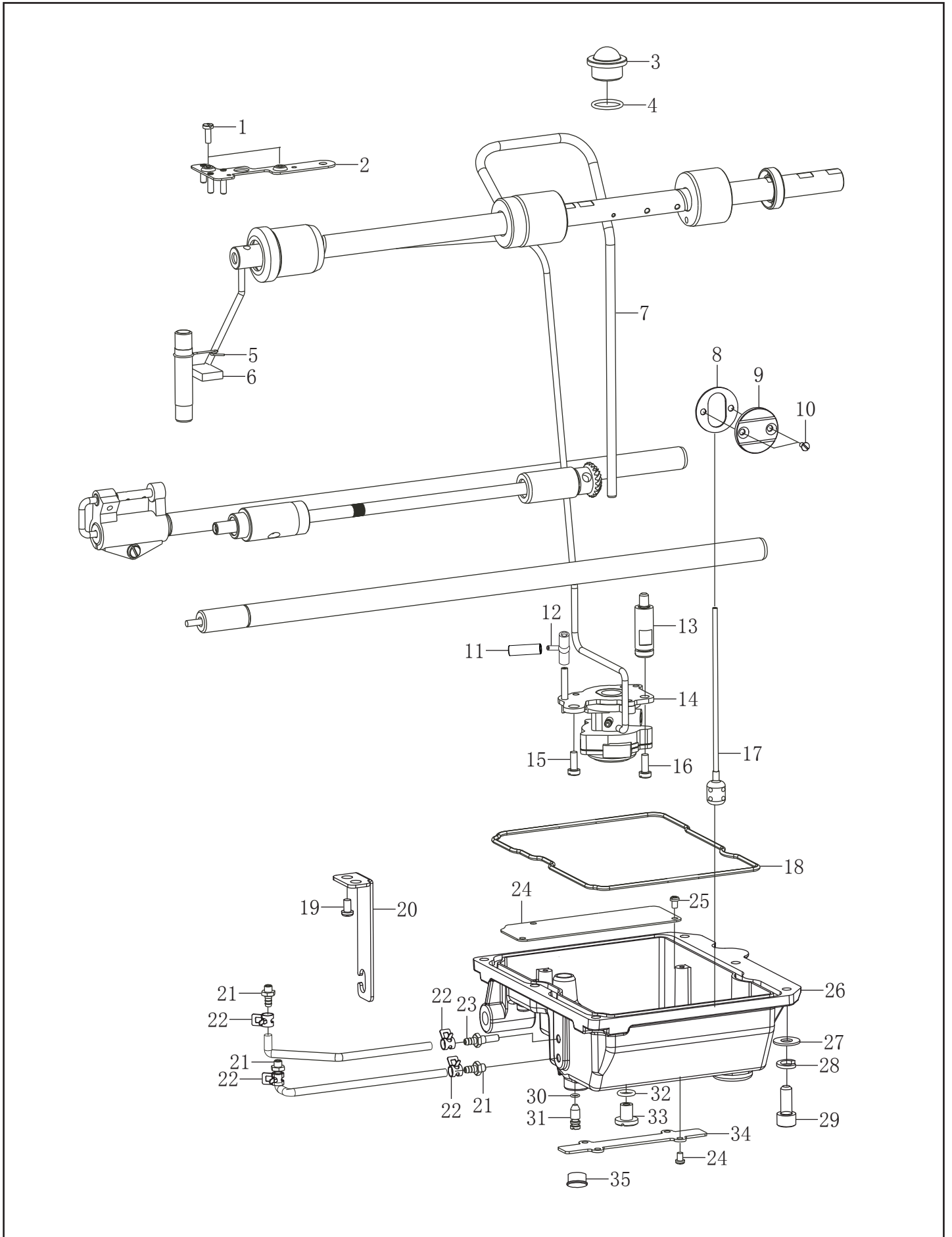


## 5. 旋梭装置/Rotary hook mechanism

序号	图号	数量	名称	NAME OF PARTS
1	101041301	1	伞齿轮组件	SCREW PAN SM4.37×40-12
2	014760832	3	螺钉SM5.95×28-8	SCREW PAN SM5.95×28-8
3	168050301	1	竖轴上轴套	VERTICAL SHAFT SLEEVE
4	101041902	1	竖轴	VERTICAL SHAFT
5	101042201	1	竖轴下轴套	VERTICAL SHAFT SLEEVE
6	115072204	1	旋梭定位勾	SPIN THE HOOK
7	115072601	1	螺钉SM4.37	SCREW PAN SM4.37
8	168052001	1	分线器	LINE MACHINE
9	101080701	1	螺钉SM3.57	SCREW PAN SM3.57
10	115072701	1	梭芯套组件	BOBBIN SLEEVE ASSEMBLY
11	115072401	1	梭芯	BOBBIN
12	115072313	1	旋梭组件	HOOK COMPONENT
13	115071401	1	油盖螺钉	OIL CAP SCREW
14	125043201	1	下轴限油芯	LOWER SHAFT LIMITING CORE
15	115073401	2	油封	OIL SEAL
16	168051401	1	下轴前套	LOWER SHAFT FRONT SLEEVE
17	115073301	2	O型圈	O-RING
18	168051601	1	下轴	LOWER AXIS
19	115071601	1	油封	OIL SEAL
20	115072001	1	紧圈	TIGHT RING
21	168051901	1	下轴后轴套	LOWER SHAFT REAL SLEEVE
22	014770532	2	螺钉SM6.35×40-5	SCREW PAN SM6.35×40-5



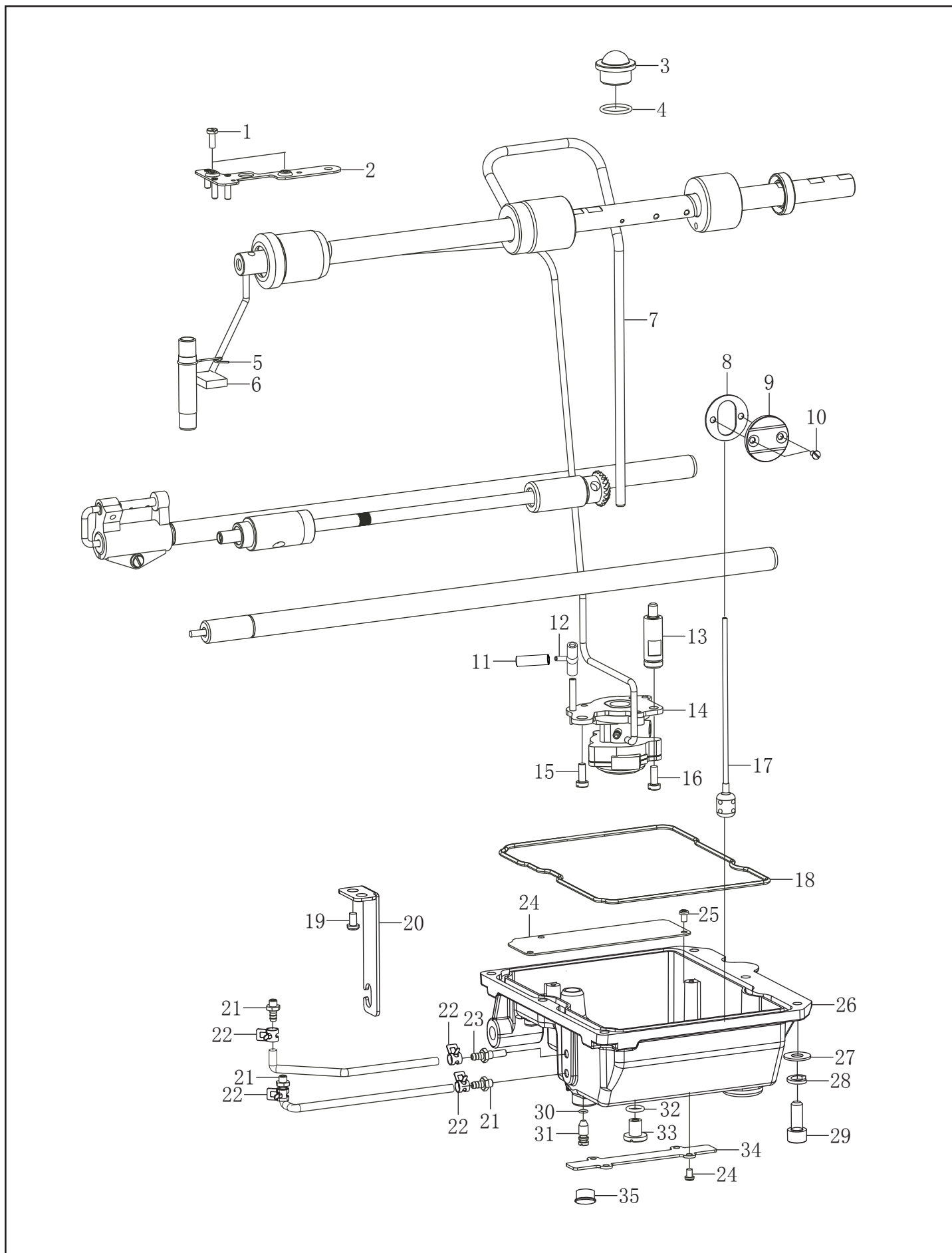
## 6. 供油润滑装置/Lubrication



## 6. 供油润滑装置/Lubrication

序号	图号	数量	名称	NAME OF PARTS
1	115031001	2	螺钉 SM3.57	SCREW PAN SM3.57
2	101090701	1	油线安装板	OIL THREAD BORAD ASM
3	101090901	1	油窗	OIL GAUGE WINDOW
4	101091001	1	O型圈	O RING
5	101090401	1	回油管夹	OIL FELT PRESSER
6	101090301	1	油毡	FELT
7	103070701	1	上轴供油管	MAIN SHAFT OIL TUBE
8	168063501	1	油窗防油垫	OIL WINDOW CUSHION
9	168063401	1	油量视窗板	OIL GAGE WINDOW
10	168063801	2	螺钉SM3.57	SCREW PAN SM3.57
11	125092201	1	铝管接头	ALUMINUM PIPE JOINT
12	101091701	1	供油管接头	OIL SUPPLY PIPE JOINT
13	101091601	1	油泵连接螺钉	OIL PUPM CONNECTION SCREW
14	168061401	1	油泵组件	PUMP UNIT
15	101074701	1	螺钉SM5.95	SCREW PAN SM5.95
16	115072601	1	螺钉SM4.37	SCREW PAN SM4.37
17	180085401	1	浮球组件	FLOAT ASSY
18	168061802	1	油盒密封垫	OIL BOX SEALING RING
19	062500616	2	螺钉M5×6	SCREW PAN M5×6
20	169080101	1	油管支架	OIL PIPE SUPPORT
21	115080401	3	供油口	OIL FEEDING PIPE
22	115085501	4	油管夹	OIL PIPE CLAMP
23	168062601	1	供油嘴	OIL FEEDING PIPE
24	168062002	1	油盒盖	THE OIL BOX COVER
25	062350616	7	螺钉M3.5×6	SCREW PAN M3.5×6
26	168062111	1	油盒	OIL BOX
27	025050132	6	垫圈5	WASHER 5
28	028050246	6	垫圈T5	SPRING WASHER T5
29	018502032	6	螺钉M5×20	SCREW PAN M5×20
30	081004870	1	O型圈P4	O-RING P4
31	115081501	1	调节螺钉	ADJUSTING SCREW
32	168063001	1	O型圈	O-RING
33	115080901	1	放油螺钉M8	SCREW PAN M8

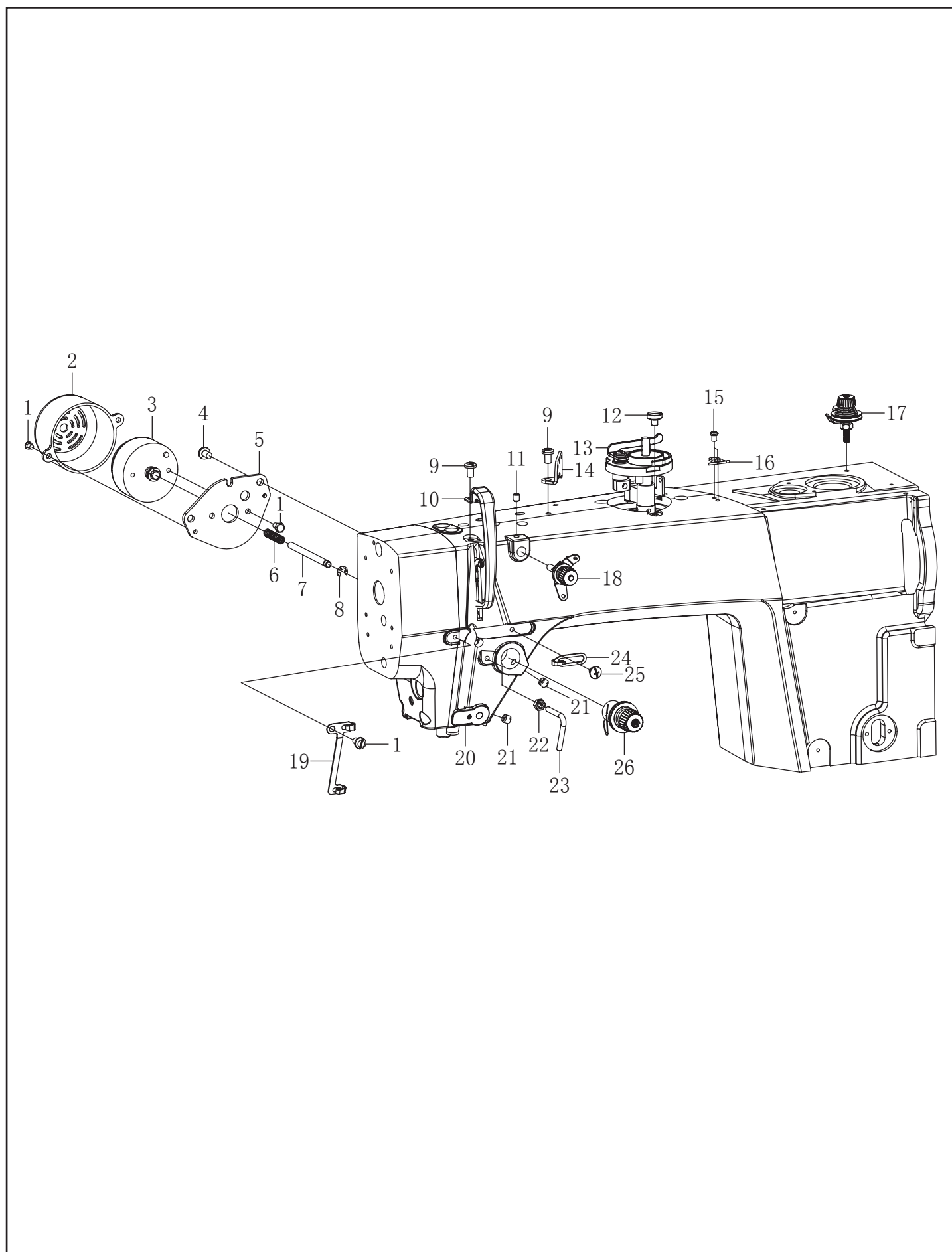
## 6. 供油润滑装置/Lubrication



## 6. 供油润滑装置/Lubrication

序号	图号	数量	名称	NAME OF PARTS
34	124123201	1	电线压板	WIRE PLATE
35	115011001	1	橡皮塞10.5	RUBBER CAP 10.5

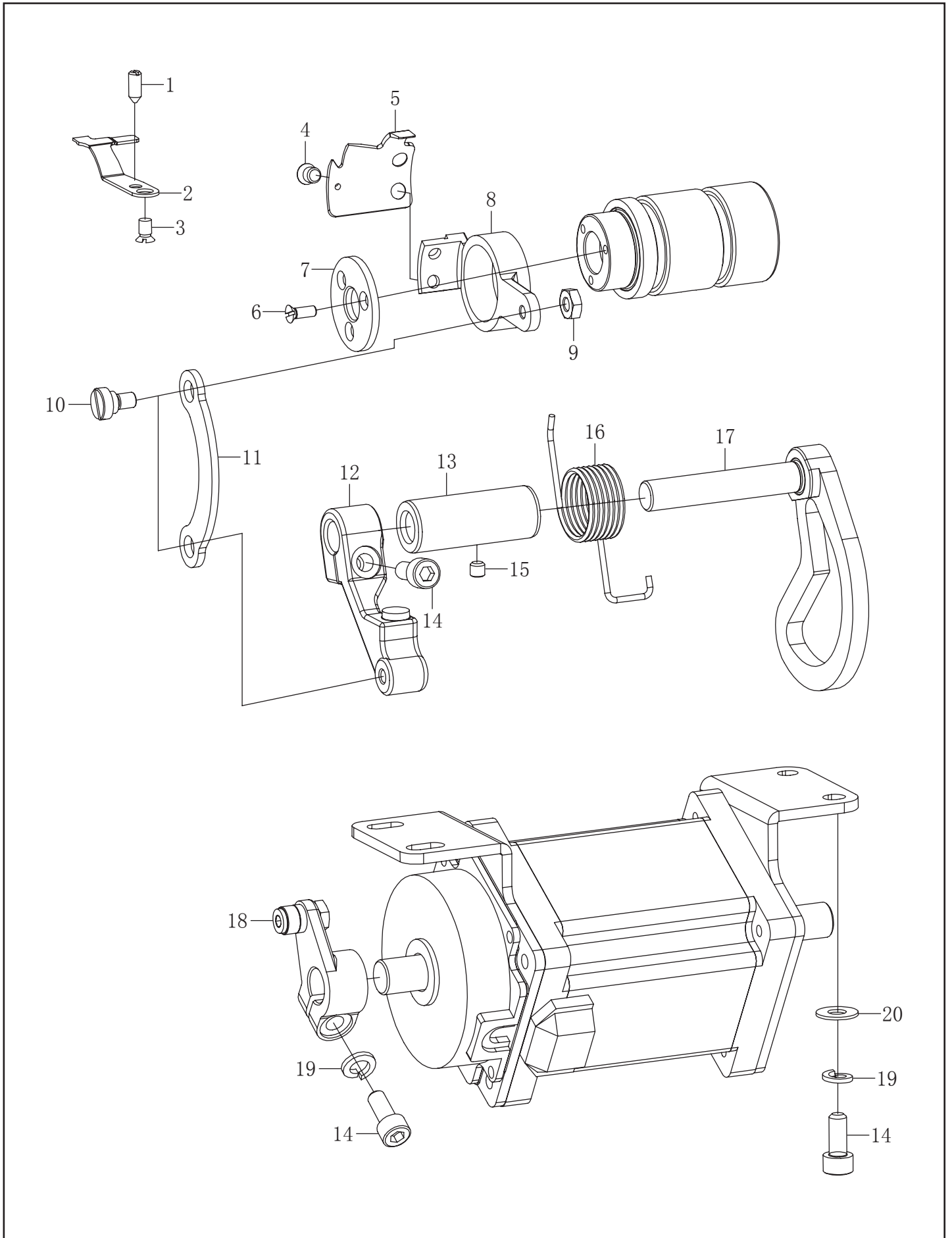
## 7. 穿线装置/Threading mechanism



## 7. 穿线装置/Threading mechanism

序号	图号	数量	名称	NAME OF PARTS
1	062400616	5	螺钉 M4×6	SCREW PAN M4×6
2	168070201	1	电磁铁罩	SOLENOID COVER
3	166070301	1	松线电磁铁组件	ELEC TENSION RELEASE ASSY
4	062500816	2	螺钉 M5×8	SCREW PAN M5×8
5	168070802	1	电磁铁安装板	SOLENOID SETTING PLATE
6	169122701	1	松线复位簧	WIRE FEED RESET SPRING
7	168070901	1	松线销	TENSION SHAFT
8	048040342	1	卡簧E4	SNAP RING E4
9	101010901	2	螺钉 SM4.76	SCREW PAN SM4.76
10	101010801	1	挑线杆防护罩	THREAD TAKE-UP LEVER COVER
11	101022201	1	螺钉 SM4.76	SCREW PAN SM4.76
12	101022601	3	螺钉 M5×10	SCREW PAN M5×10
13	101022501	1	绕线器组件	BOBBIN WINDER ASM
14	115090301	1	穿线板	SPOOL PLATE
15	101022801	2	螺钉 SM3.57	SCREW PAN SM3.57
16	101022701	1	切刀	KNIFE
17	168072101	1	绕线器夹线组件	BOBBIN THREAD TENSION ASM
18	168072201	1	调线夹线器组件	THREAD TENSION ASM
19	180090201	1	面板线勾	PANEL HOOK
20	166072501	1	电子夹线器	THREAD TAKE-UP
21	013760532	2	螺钉 SM5.95×28-5	SCREW PAN SM5.95×28-5
22	115111601	1	螺母 SM4.37	NUT SM4.37
23	101020502	1	大线勾	P-BAR BRACKET THREAD GUIDE
24	101020701	1	右线勾	RIGHT LINE HOOK
25	101020201	1	螺钉 SM4.37×40-6	SCREW PAN SM4.37×40-6
26	168072501	1	夹线器组件	THREAD TENSION ASSY

## 8. 切线装置/Thread trimmer mechanism

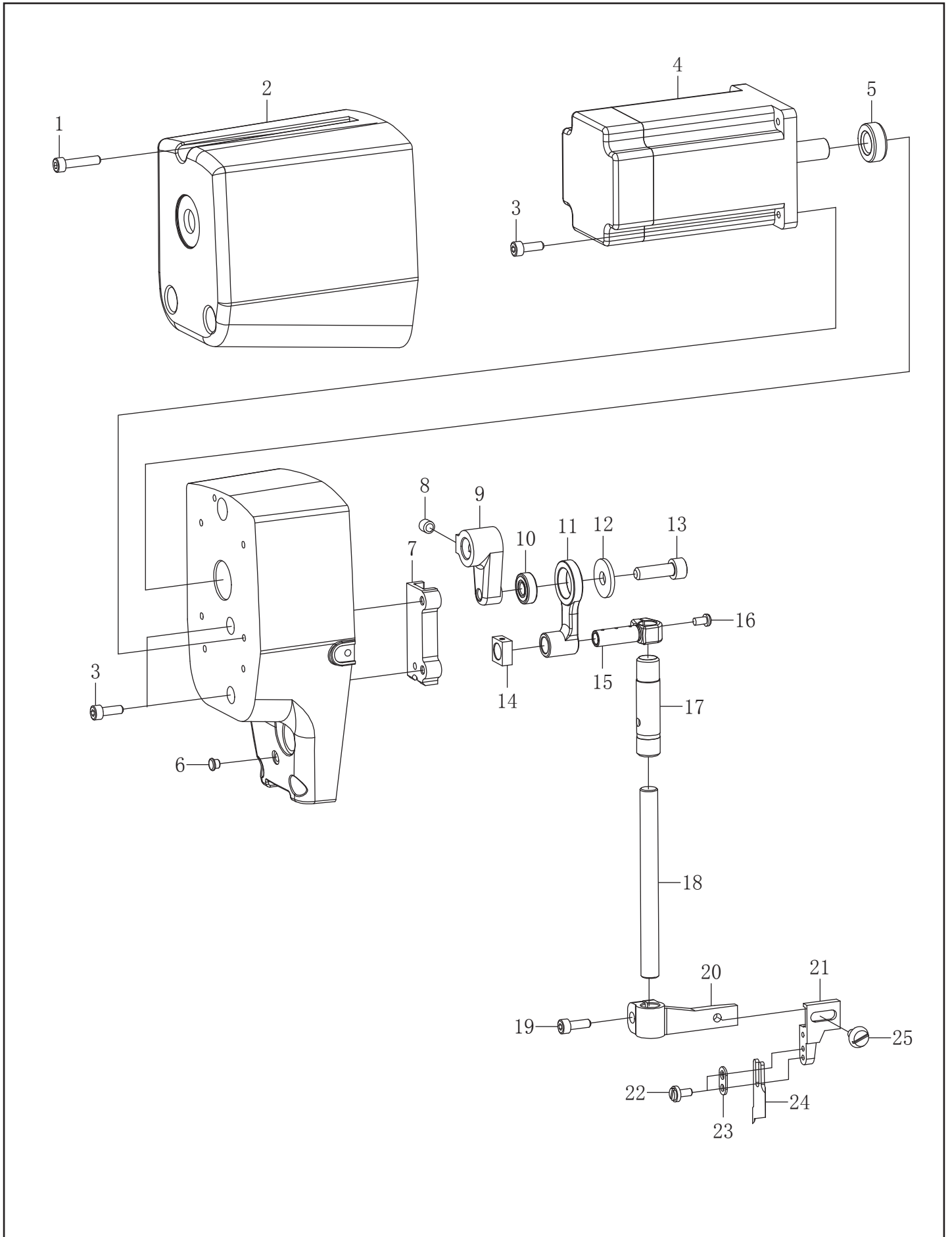


## 8. 切线装置/Thread trimmer mechanism

序号	图号	数量	名称	NAME OF PARTS
1	115116001	1	定刀调节螺钉	SCREW PAN
2	115110301	1	固定刀	FIXED KNIFE
3	115110401	1	螺钉 SM3.57	SCREW PAN SM3.57
4	115111301	2	螺钉 SM4.37	SCREW PAN SM4.37
5	101081401	1	动刀	MOVABLE KNIFE
6	125080401	3	螺钉 M3×5	SCREW PAN M3×5
7	125082501	1	动刀压板	KNIFE HOLLDER PRESSER PLATE
8	168081701	1	刀架	HOLER M-KNIFE
9	115111601	1	螺母 SM4.37	NUT SM4.37
10	101081201	2	轴位螺钉 SM4.37	SCREW PAN SM4.37
11	152207901	1	刀架连杆	KNIFE HOLLDER CONNECTING
12	152207302	1	切线限位曲柄	TANGENT LIMIT CRANK
13	125082201	1	切刀轴套	CUTTER BUSH
14	018501432	6	螺钉 M5×14	SCREW PAN M5×14
15	014760832	1	螺钉 SM5.95×28-8	SCREW PAN SM5.95×28-8
16	115112001	1	切刀驱动曲柄弹簧	SPRING
17	166201201	1	切线曲柄	THREAD TRIMMER LEVER
18	169110102	1	切线驱动曲柄	THREAD TRIMMER LEVER SHAFT
19	028050246	5	弹簧垫片 T5	SPRING WASHER T5
20	025050132	4	垫圈	WASHER



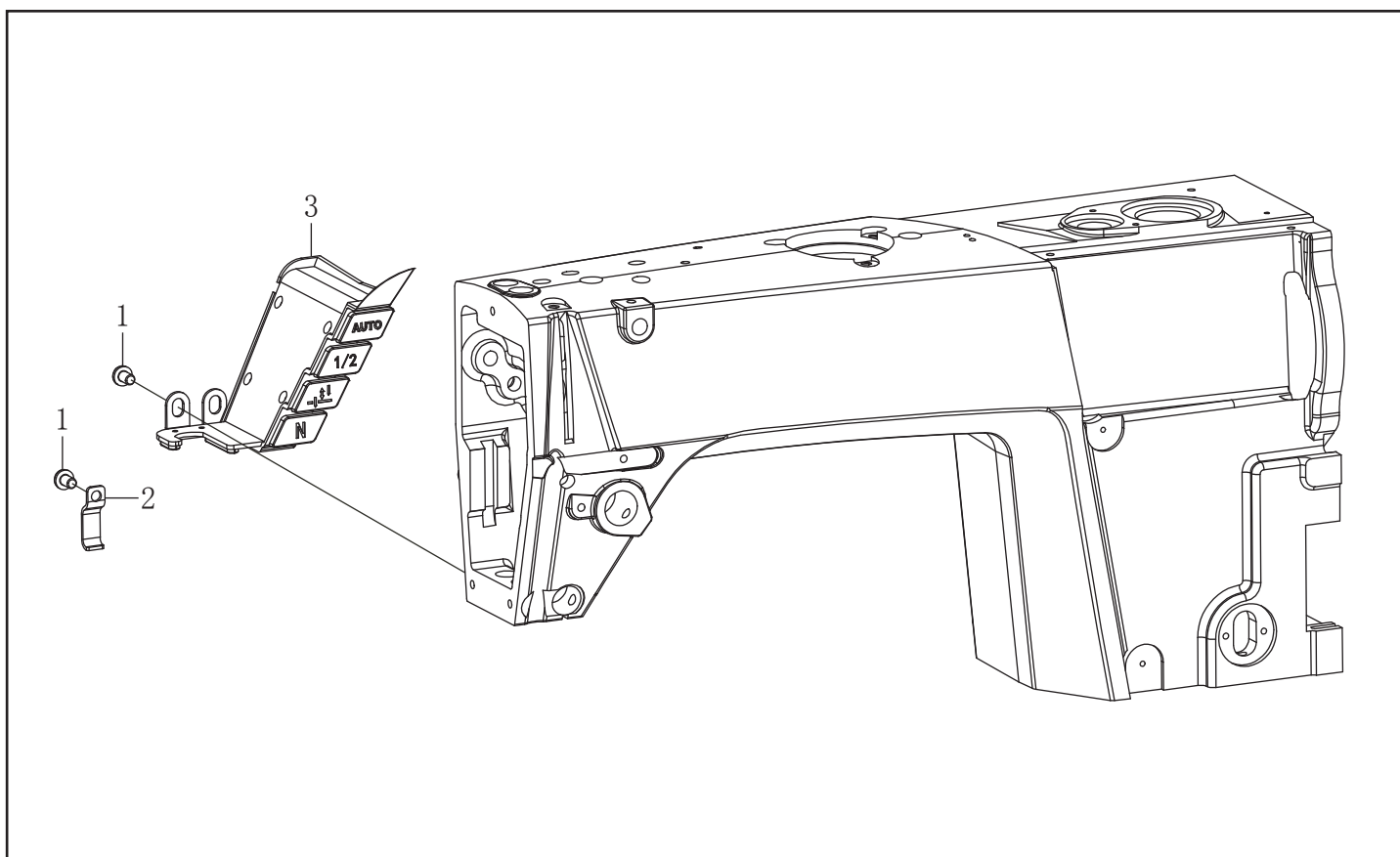
# 9. 切刀装置/Cutter assembly



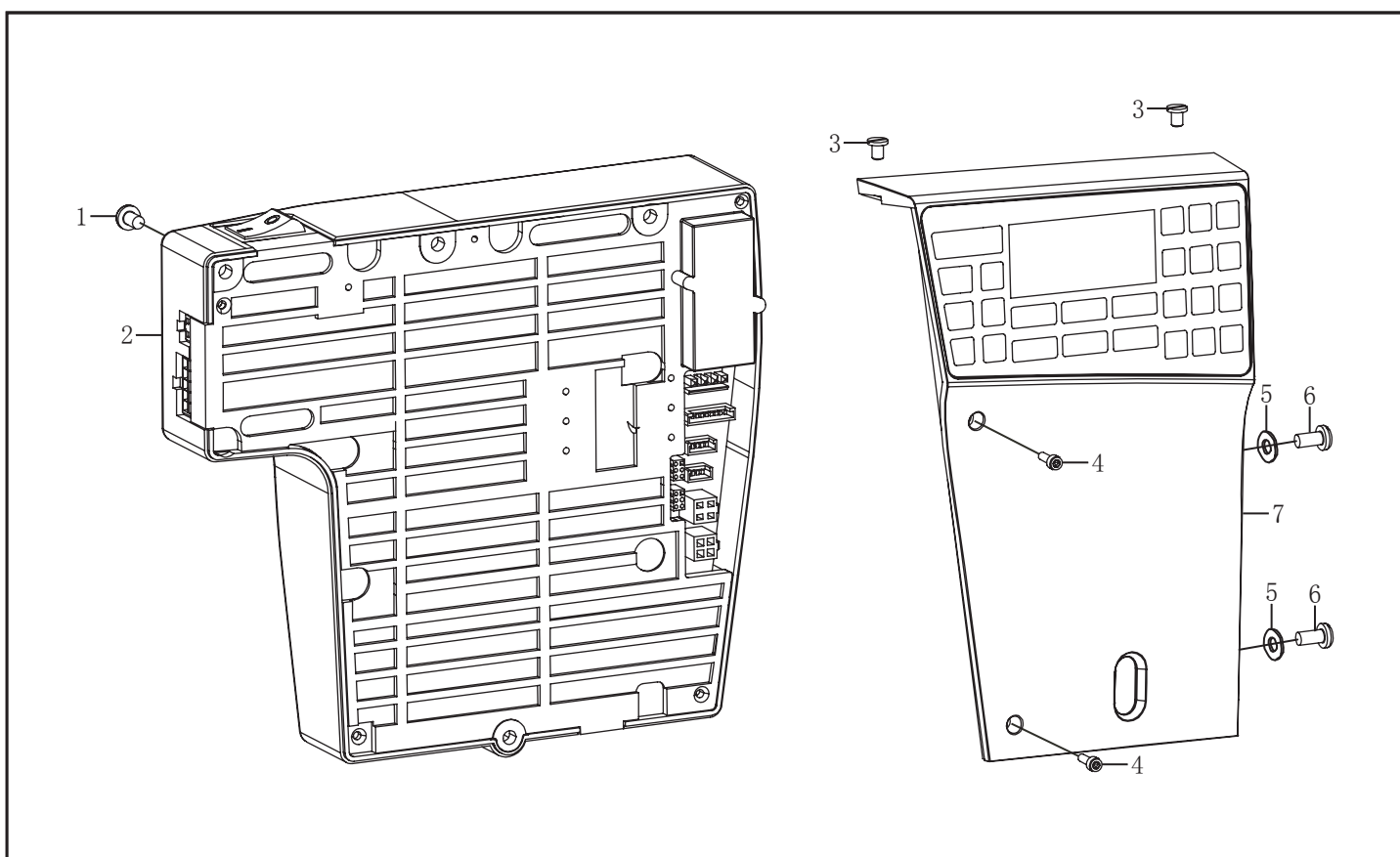
## 9. 切刀装置/Cutter assembly

序号	图号	数量	名称	NAME OF PARTS
1	018402032	3	螺钉 M4×20	SCREW PAN M4×20
2	152410601	1	罩壳	SHELL
3	018401436	6	螺钉 M4×14	SCREW PAN M4×14
4	152410101	1	切刀驱动电机	CUTTER DRIVE MOTOR
5	169041101	1	油封	OIL SEAL
6	124042101	1	橡皮塞4.3	RUBBER CAP 4.3
7	152411101	1	滑块槽	SLIDE BLOCK SLOT
8	012600636	2	螺钉 M6×0.75-6	SCREW PAN M6×0.75-6
9	152410501	1	切刀驱动曲柄	CUTTER DRIVING CRANK
10	169034001	1	轴承	BEARING
11	152410801	1	切刀驱动连杆	THE CUTTER DRIVES THE LINK
12	124154501	1	垫圈 6	WASHER 6
13	018601632	1	螺钉 M6×0.75-16	SCREW PAN M6×0.75-16
14	152410901	1	滑块	SLIDER
15	152411001	1	针杆连接柱	NEEDLE ROD CONNECTION POST
16	062350816	1	螺钉 M3.5×8	SCREW PAN M3.5×8
17	152410701	1	切刀驱动衬套	CUTTER DRIVE BUSHING
18	152410401	1	切刀轴	CUTTER SHAFT
19	018501232	1	螺钉 M5×12	SCREW PAN M5×12
20	152410301	1	切刀架	CUTTER
21	152411301	1	切刀安装架	CUTTER MOUNTING RACK
22	152203901	2	螺钉 SM3.57	SCREW PAN SM3.57
23	152203071	1	切刀垫片	CUTTER GASKET
24	152203601	1	切刀	CUTTER
25	062500816	1	螺钉 M5×8	SCREW PAN M5×8

## 10. 倒缝开关装置/Quick reverse switch mechanism



## 11. 控制装置/Control components



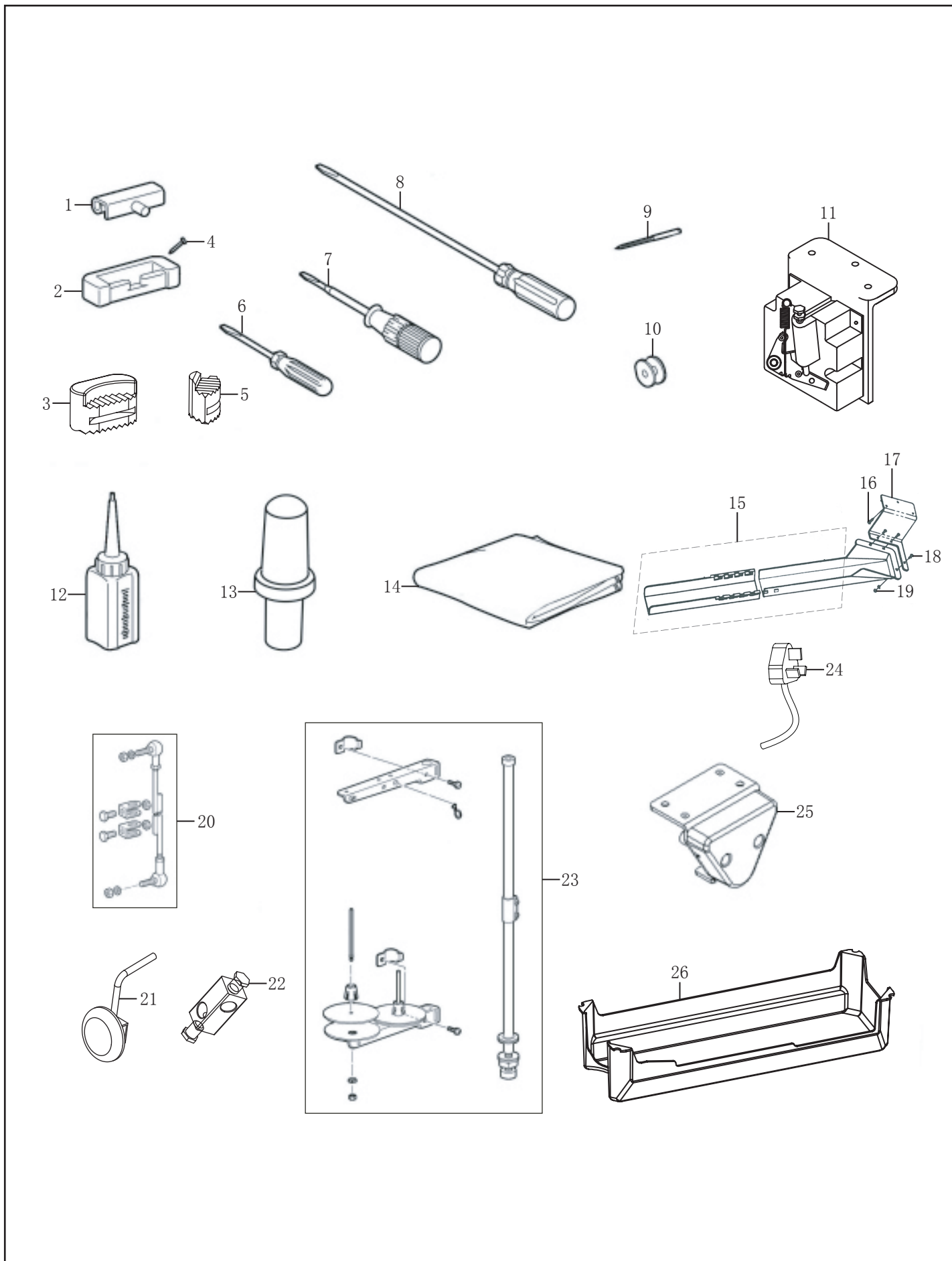
## 10. 倒缝开关装置/Quick reverse switch mechanism

序号	图号	数量	名称	NAME OF PARTS
1	062500816	4	螺钉 M5×8	SCREW PAN M5×8
2	152411401	1	倒缝开关组件	R-SWICH ASSY
3	115114801	2	电线夹 U2	CORD HOLDER U2

## 11. 控制装置/Control components

序号	图号	数量	名称	NAME OF PARTS
1	018502032	3	螺钉 M5×20	SCREW PAN M5×20
2	168101501	1	控制箱	CONTROL BOX ASSY
3	101020201	2	螺钉 SM4. 37×40-6	SCREW PAN SM4. 37×40-6
4	168012501	2	螺钉 M3×8	SCREW PAN M3×8
5	025050132	2	垫片 M5	WASHER M5
6	062501817	2	螺钉 M5×8	SCREW PAN M5×8
7	168101301	1	操作盒组件	OPERATION PANEL

## 12. 附件/Accessories



## 12. 附件/Accessories

序号	图号	数量	名称	NAME OF PARTS
1	115150401	2	机头铰链	MACHINE HINGE PLATE
2	101120501	2	机头铰链套	HINGE SLEEVE HEAD
3	125120601	2	头部防震垫	QUAKEPROOF WASHER
4	115150701	4	钉	NAIL
5	125120801	2	头部防震垫 R	QUAKEPROOF WASHER R
6	115151601	1	螺丝刀 (小)	SCREW DIRVER S
7	115151701	1	螺丝刀 (中)	SCREW DIRVER M
8	115151801	1	螺丝刀 (大)	SCREW DIRVER B
9	115024112	4枚	机针 DB×1 #14	NEEDLE DB×1 #14
10	115072401	2	梭芯	BOBBIN
11	115152001	1	控速器	CONTROLLER
12	115151001	1	中号油壶	OIL RESERIVIR
13	168111401	1	机头撑杆	HEAD REST
14	6040101	1	机头罩	HEAD COVER
15	152208201	1	漏料槽组件	DRAIN TANK ASSEMBLY
16	152208101	15	木螺钉ST4.2×25	WOOD SCREW ST4.2×25
17	152208001	1	导屑滑板支架	CHIP GUIDE SLIDE BRACKET
18	062401216	3	螺钉 M4×12	SCREW PAN M4×12
19	021400306	3	螺母 M4	NUT M4
20	115151901	1	连杆组件	CONNECTING ROD ASSY
21	125104001	1	膝控组件	KNEE LIFTER ASSY
22	125104101	1	膝控接头	KNEE JOINT
23	115151401	1	线架组件 2DR	THREAD STAND ASM 2DR
24	169050101	1	膝靠组件	ELECTRONIC KNEE CONTROL
25	169085001	1	油盘	OIL PAN

