

DUMA 杜马

POWER 系列

双步进智能带侧切刀平缝机

Double Step Smart Needle Side Knife Lockstitch Sewing Machine

1952



匠心制作, 所以精致

Crafty, so exquisite

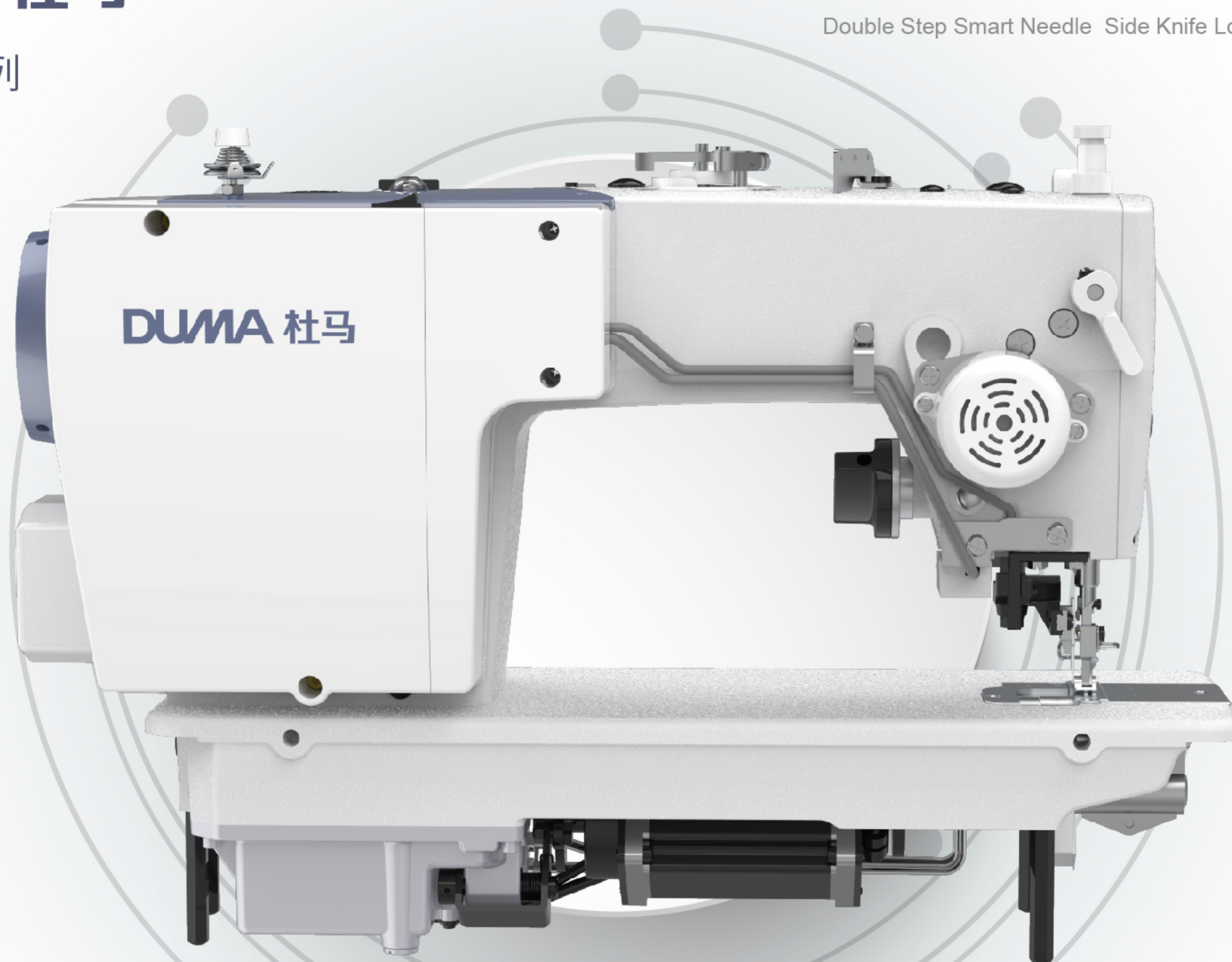
DUMA 杜马

POWER 系列

双步进智能带侧切刀平缝机

Double Step Smart Needle Side Knife Lockstitch Sewing Machine

1952



匠心制作, 所以精致

Crafty, so exquisite

1952基本配置



切刀开关

补针按钮

超耐磨针杆

LED照明灯

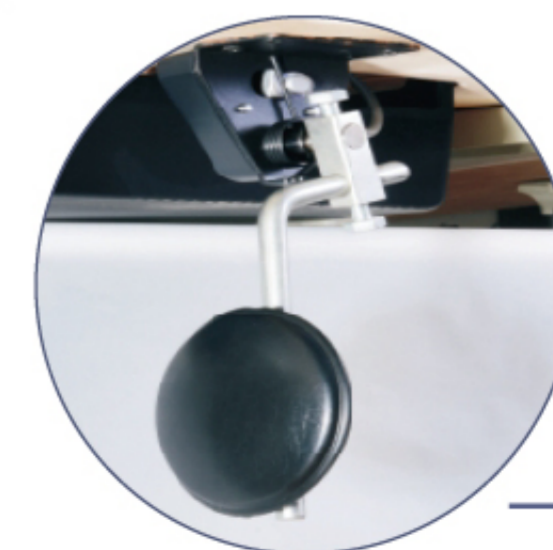
4.3寸液晶屏

通轴传动

可视油窗

密封油盒

电子膝靠



■ 超耐磨针杆

DLC needle bar

采用黑金刚针杆，可有效减少漏油并极大限度延长使用寿命。

Adopt DLC needle bar, reduce oil leakage and greatly extend using life.

■ LED照明灯

LED light

触手可及，亮度可调。

Convenient & with adjustable brightness.

■ 多功能补针按钮

Multi-function needle refill button

可实现变针距补针功能。

It can realize the function of needle filling with variable needle distance.

■ 可离合式切刀开关

Clutch type cutter switch

实现切布与非切布缝制功能切换。

Realize the switch between the sewing function of cut cloth and non-cut cloth.

■ 4.3寸显示屏

4.3-inch display

液晶触摸屏功能齐全，操作简便明了。

The LCD touch screen has complete functions and the operation is simple and clear.

■ 密封油盒

Sealed oil tank

清洁缝纫，避免油污造成的缝料污染，同时可减小整机运作时的噪音；

Cleaning sewing, it avoid cloth dirty from oil, meantime reduce noisy when machine working.

■ 可视油窗

Visual oil window

可以确认油的剩余用量。

It's easy to confirm the amount of the remaining oil.

■ 通轴传动

No Bearing Servo Motor

直接使用主轴作为电机轴，无需用连轴器连接，主轴刚性好，力矩轻，电机运转声音轻。

The machine connecting only with one main shaft, more rigid, torque more light, and motor works voice more light

■ 电子脚靠

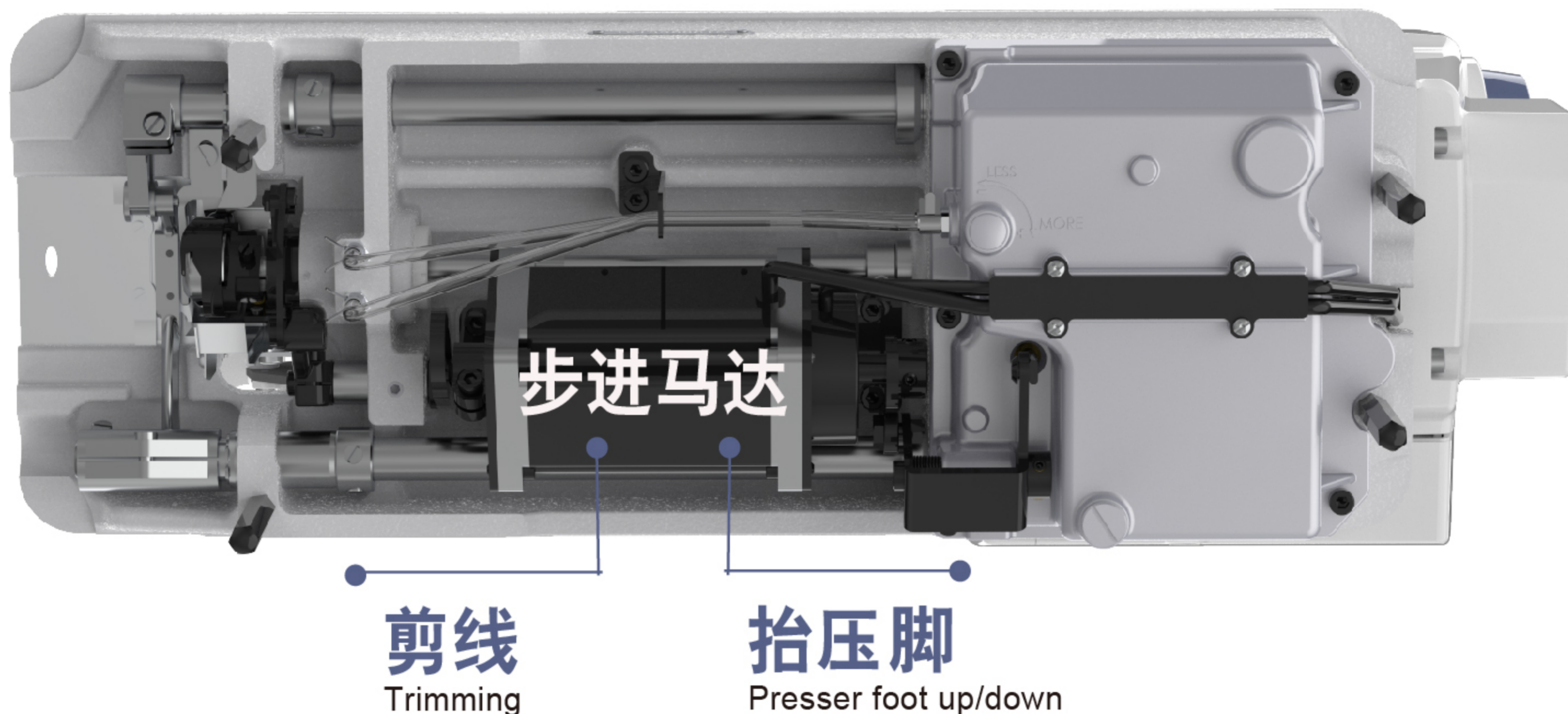
Electronic footrest

不改变工人的操作习惯，实现轻松抬压脚。

It easy to lift the presser foot and no need to change worker's sewing habit.

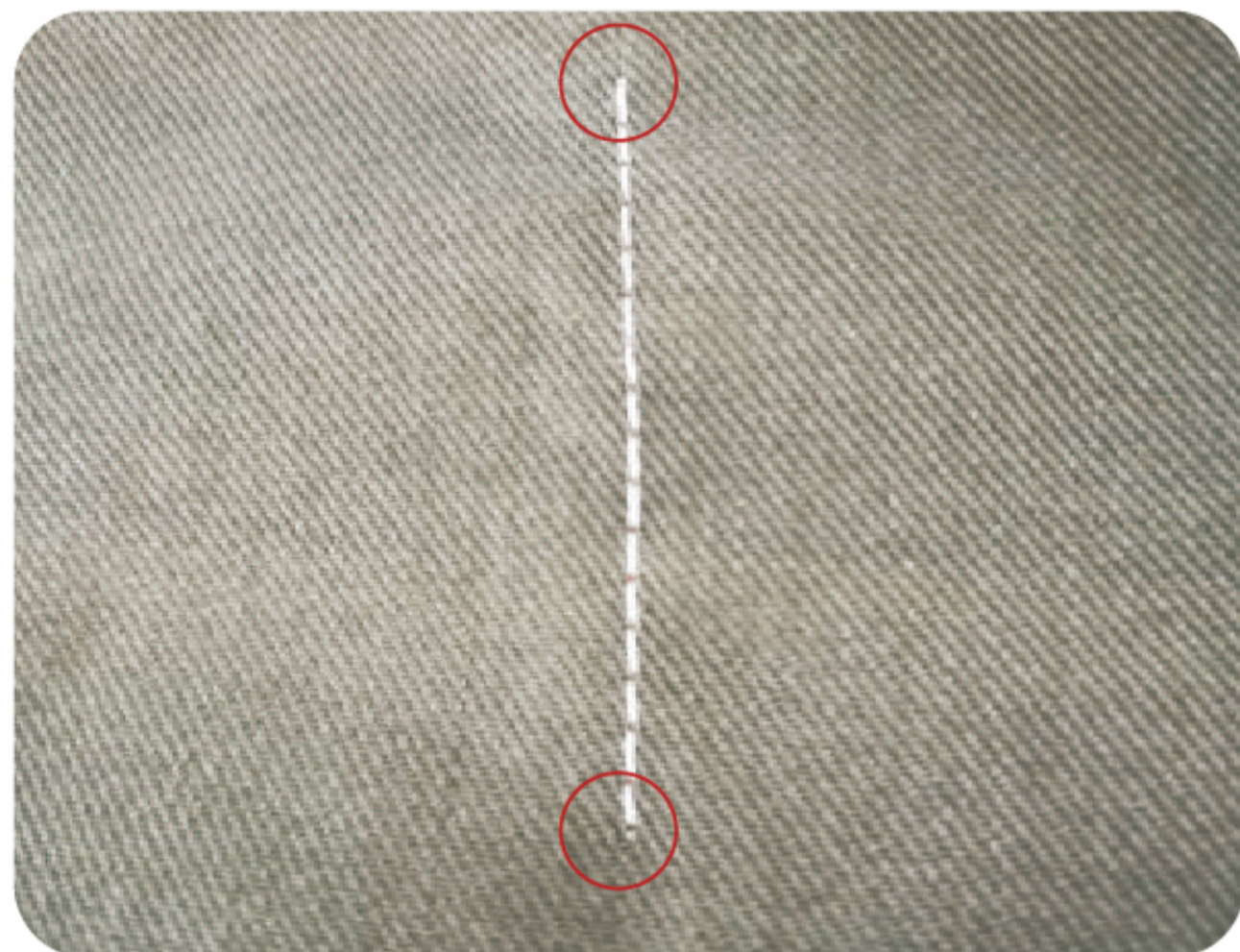
															
DM1952	(DB×1)#7~#16	0-6	4	6-10	★	★	★	★	-	★	-	★	4500	620x280x545	46/40kg

1952性能展示



步进电机双向控制：一个电机控制抬压脚与剪线(专利技术)，方便压脚高度调整,压脚升降无噪声,剪线平稳顺畅。

Trimming Step motor bidirectional driven technology (patent): One step motor control trimming and pressing foot lifter work, convenient press foot height adjustment, press foot lift without noise, smooth cutting line.



①

前、后加密缝功能：

缝制起始/终止端锁小针距线迹，有效缩短留在缝料上的线头长度，防止线头松散。

Front and back encrypted sewing function:

Lock the small stitches at the sewing start/end end, effectively shorten the length of the thread left on the sewing material to prevent the thread from falling out.



②

高品质的加固缝线迹：

步进电机控制针距与倒缝, 针距精准, 倒缝无噪声。

high-quality start-end reverse sewing:

Stepping motor controls the stitch length and reverse stitching, precise stitch length, no noise in reverse stitching

适用于缝制各种薄料到中厚料服装等。

Suitable for sewing all kinds of thin to medium and thick material clothing



NEW SERIES FULL OF POWER

Inspired and unique design appearance
with excellent practical performance.



國貨必須
自強 



浙江省台州市椒江区机场南路58号
No. 58, Airport South Road, Jiaojiang District,
Taizhou City, Zhejiang Province



电话/Tel: +86-576-89086976/86
传真/Fax: +86-576-89086979



网络/Web: www.cnduma.com
E-mail: sales@cnduma.com