

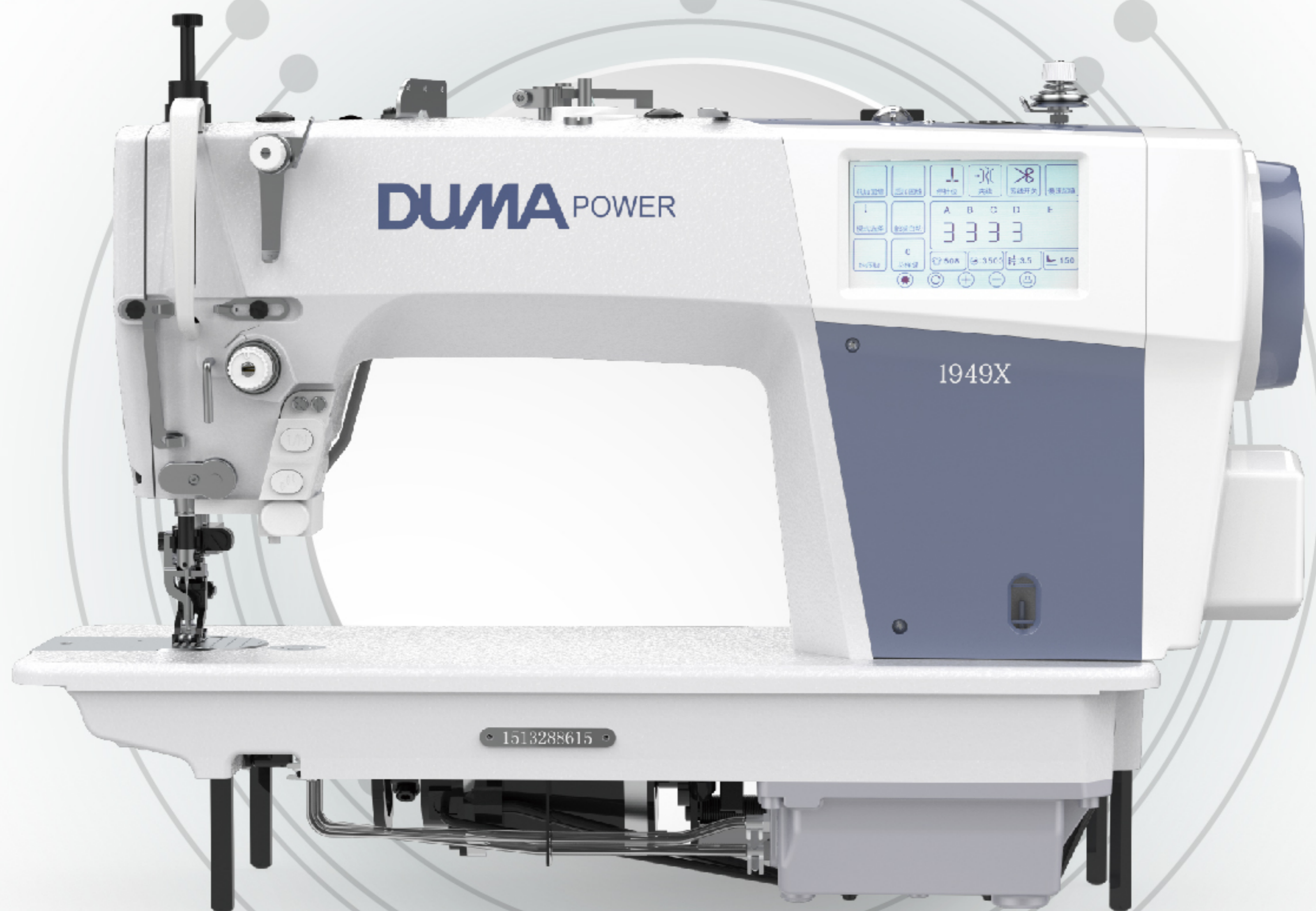
DUMA 杜马

POWER 系列

双步进智能上差动送料平缝机

Top synchronous feed stepping motor driving lockstitch machine

1949X



匠心制作, 所以精致

Crafty, so exquisite

DUMA 杜马

POWER 系列

双步进智能上差动送料平缝机

Top synchronous feed stepping motor driving lockstitch machine

1949X



匠心制作, 所以精致

Crafty, so exquisite

1949X基本配置



组合按钮

LED照明灯

超耐磨针杆

4.3寸液晶屏

上差动步进

密封油盒

电子膝靠

■ 超耐磨针杆

DLC needle bar

采用黑金刚针杆，可有效减少漏油并极大限度延长使用寿命。

Adopt DLC needle bar, reduce oil leakage and greatly extend using life.

■ LED照明灯

LED light

触手可及，亮度可调。

Convenient & with adjustable brightness.

■ 组合按钮

Combined button

A0 模式下，可进行倒缝，补针，补1/2针；A1-A9 模式下，可进行倒缝，补针，切换差动比。

Under the mode A0, it's convenient to back-tacking, fill needle and 1/2 fill needle; Under the mode A1-A9, it's convenient to back-tacking, fill needle and percent manipulated variable

■ 4.3寸液晶屏

4.3 inch LCD screen

液晶显示触摸屏功能齐全，内容直观，操作便捷。

The LCD touch screen has complete functions and the operation is simple and clear.

■ 密封油盒

Sealed oil tank

清洁缝纫,避免油污造成的缝料污染,同时可减小整机运作时的噪音;

Cleaning sewing, it avoid cloth dirty from oil, meantime reduce noisy when machine working.

■ 可视油窗

Visual oil window

可以确认油的剩余用量。

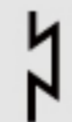
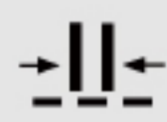
It's easy to confirm the amount of the remaining oil.

■ 电子脚靠

Electronic foot pedal

不改变工人的操作习惯,实现轻松抬压脚。

It easy to lift the presser foot and no need to change any sewing habit.



DM1949X

(DB×1)#7~#16

0-6

6-12

★

★

★

★

-

★

-

★

4500

620x280x545

45.8/39.7

1949X性能展示

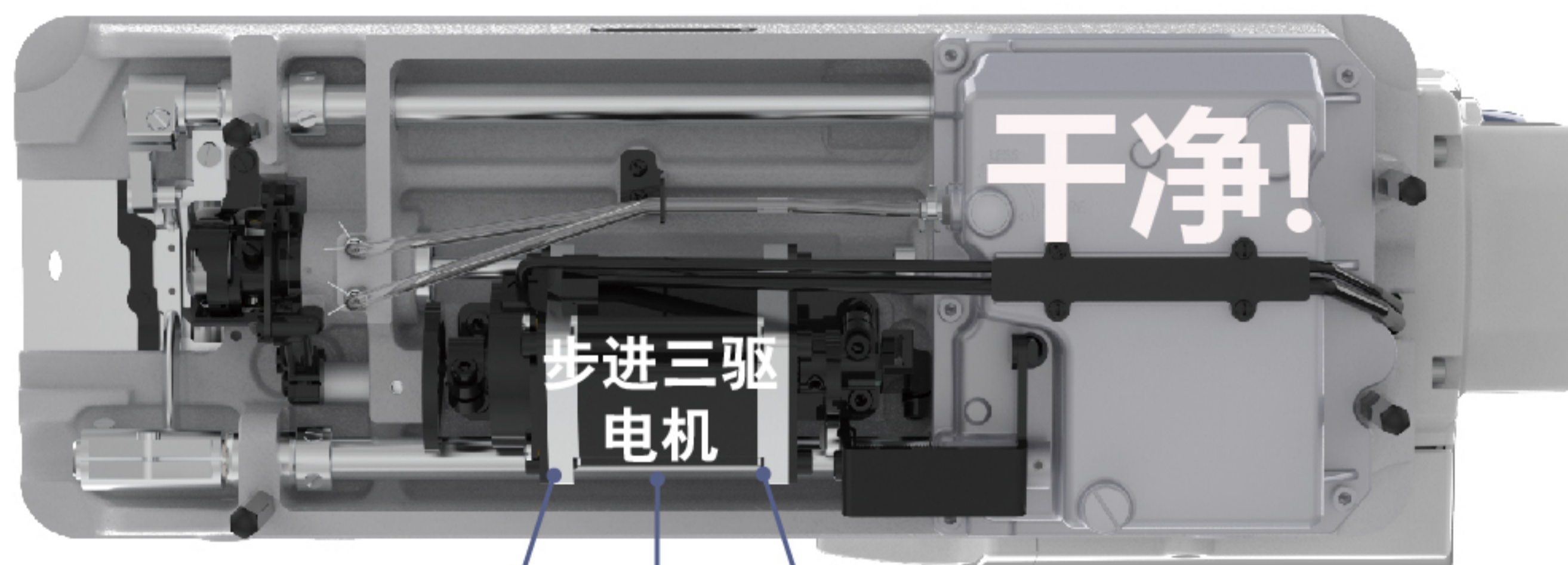
步进驱动上差动

Up and down feeding & stepping three-wheel drive



专利步进三驱技术，一个步进电机控制针距、剪线以及抬压脚功能。

Step 3 dirve technology (DUMA patent), adopt a step motor to control stitch, trimmer and presser foot lifter.



控针距

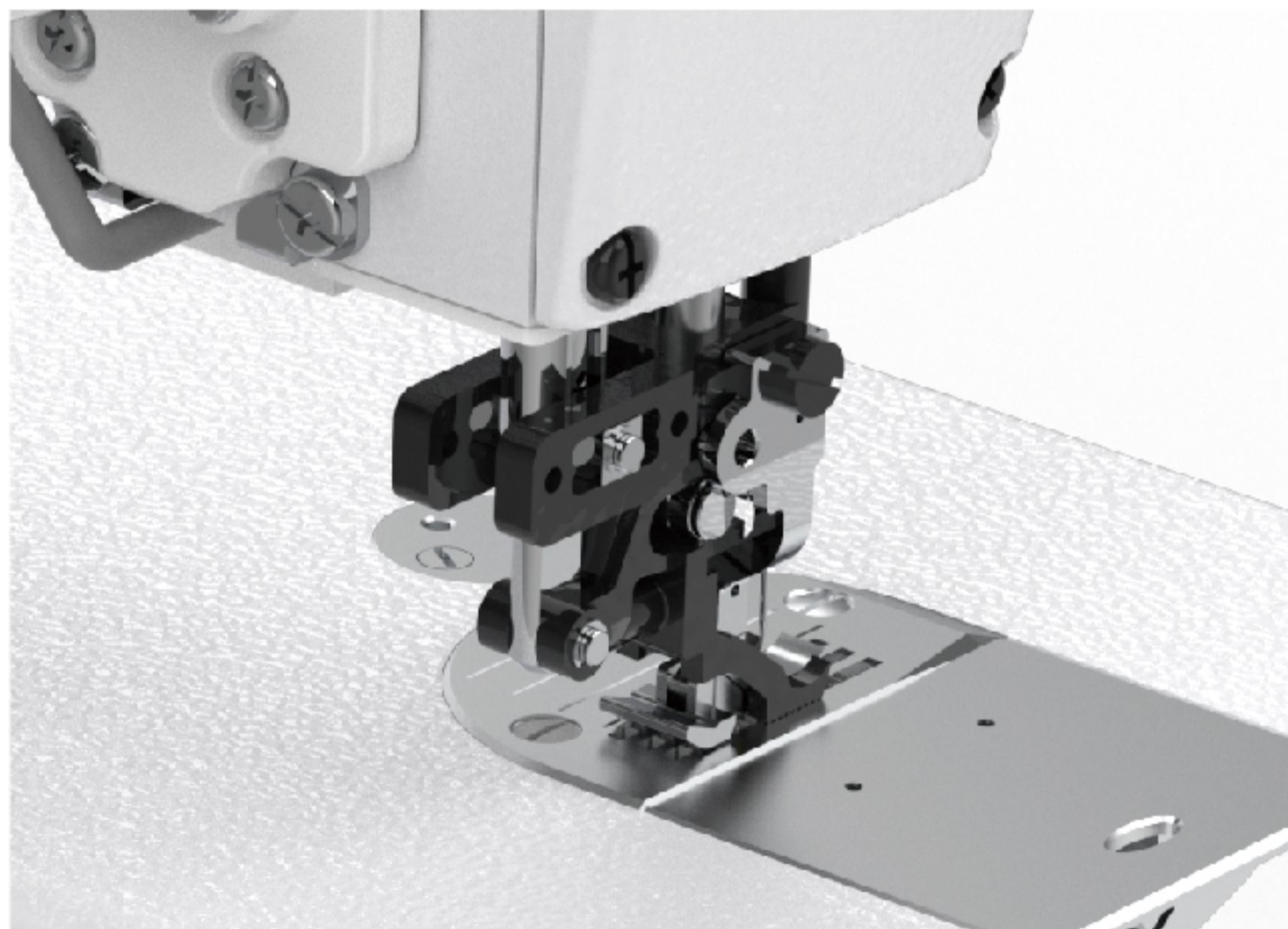
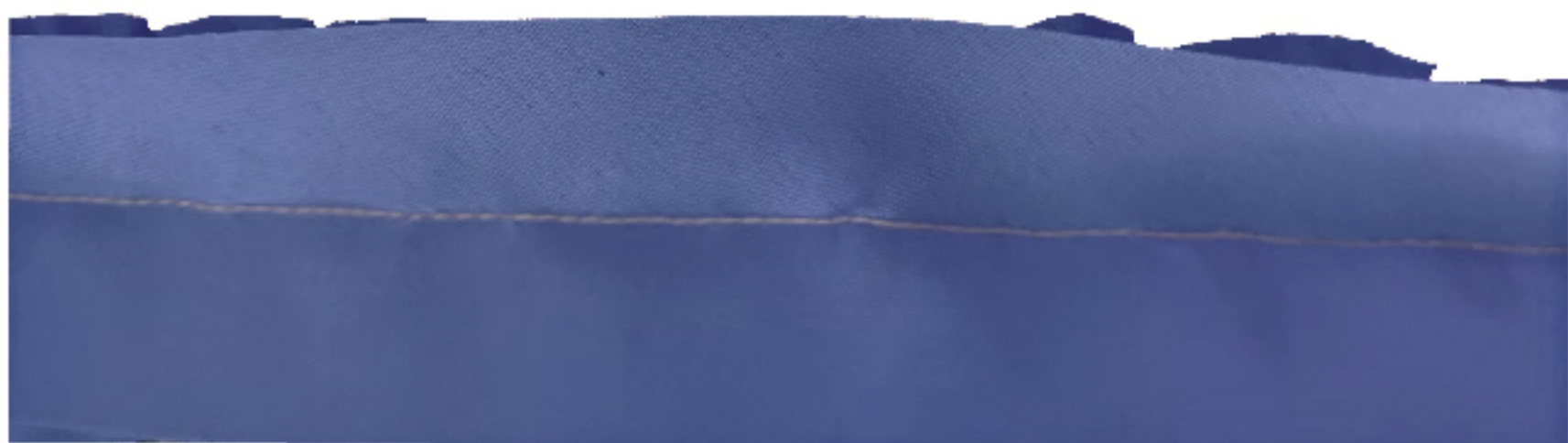
Control stitch length

剪线

Trimming

抬压脚

Presser foot up/down

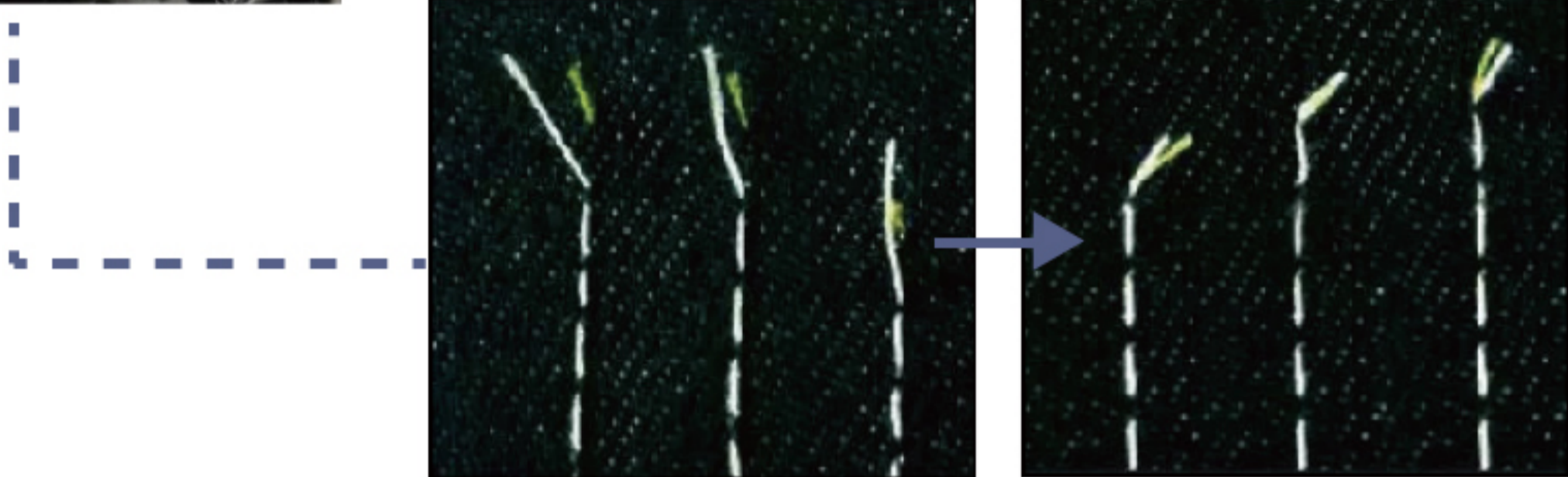


- 步进电机控制上差动量：**
① 调节上送布压脚运动轨迹，适应不同布料的吃省缝制以及打皱工艺。

Top and bottom Variable feed which can accurate to controlled UP feeding, suit for various sewing such as wrinkled, percent manipulated variable

- 多段差动缝功能：**
② 可编辑储存不同差动比的缝制，实现多段差动缝的快捷切换。

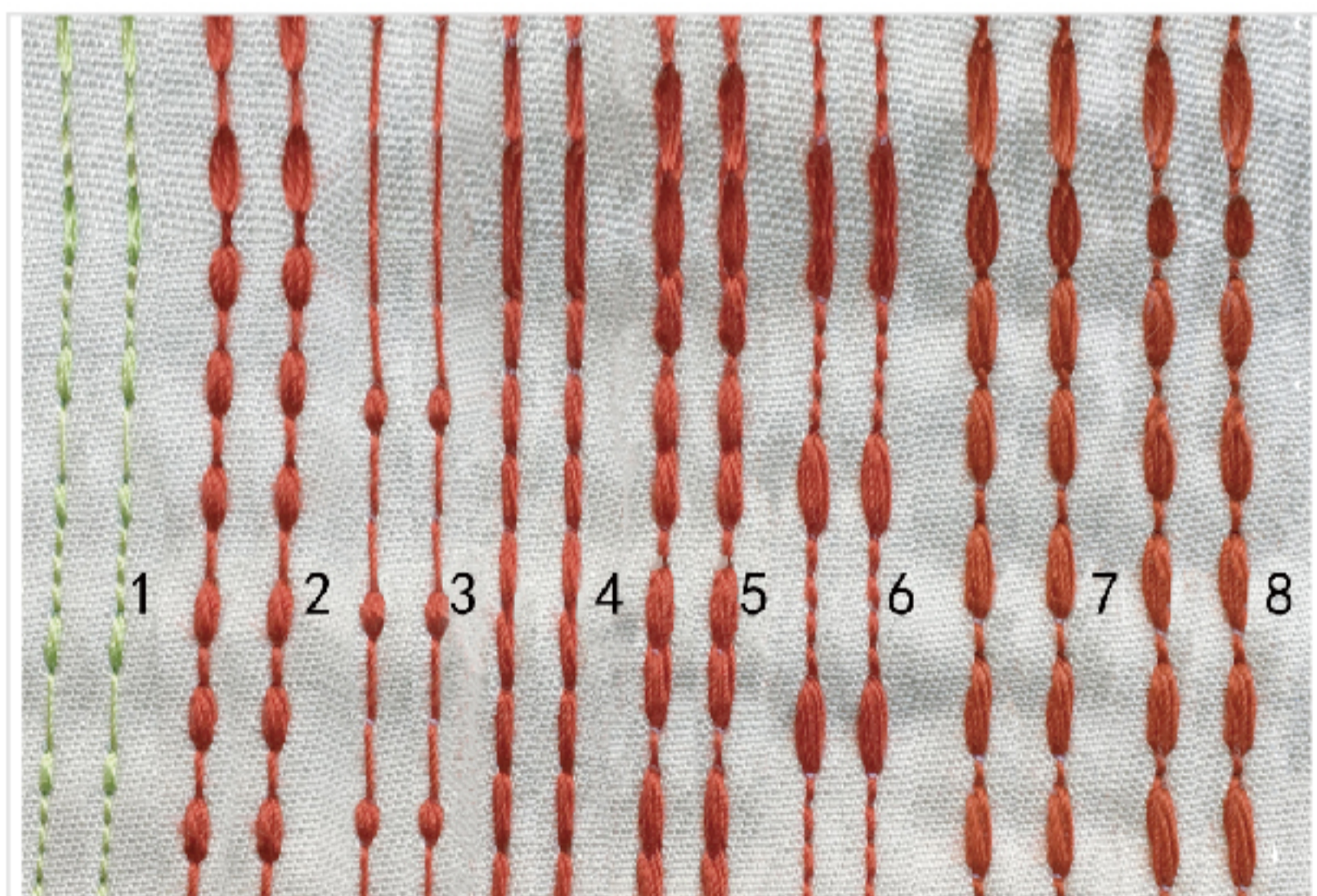
Multi-stage differential seam function:
It can edit and store the sewing of different differential ratios to realize the fast switching of multi-section differential stitches.



③

双动刀剪线：
可在机针正下方完成剪线，
缝纫后线头最短3mm，
有效减少人工剪线的工作量。

Double round knife trimmer system, thus realized after trimmer the thread $\leq 3\text{mm}$.



④

花样缝：由于步进马达控制,可以设定
产生8种不同线迹,精准的送料行程,可
以实现针迹重合的加固缝。

Controlled by step motor drive system, machine it can design 8 type stitch patterns (support your idea setting).



NEW SERIES

FULL OF POWER

Inspired and unique design appearance
with excellent practical performance.



国货必须 自强



浙江省台州市椒江区机场南路58号
No. 58, Airport South Road, Jiaojiang District,
Taizhou City, Zhejiang Province



电话/Tel: +86-576-89086976/86
传真/Fax: +86-576-89086979



网络/Web: www.cnduma.com
E-mail: sales@cnduma.com