

# DUMA



浙江杜马缝纫机股份有限公司  
ZHEJIANGDUMASEWINGMACHINE CO.,LTD.

地址：浙江省台州市椒江区机场南路58号  
电话：0576-89086969 传真：0576-89086999  
网址：www.cnduma.com



## DM-1968NF

### 双步进智能针送料平缝机

Double Step Smart Needle Feed Lockstitch Sewing Machine

## 四个按键

配有四按键的照明灯组件,方便进行加固、补针(补1针,补1/2针,1/4针)操作。  
equipped with four-button LED light, it is convenient to reinforce and .

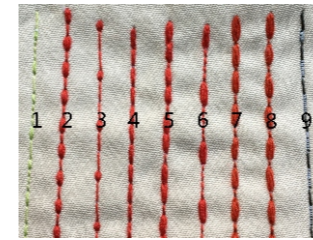


## 全新针杆

采用黑金刚针杆,可以显著减少漏油和磨损。  
Adopt DLC needle bar, it can obviously reduce oil-leak problem and wearability

## 全新触控显示屏

4.3英寸彩色触摸屏,内容直观,操作方便。  
4.3 inch colorful touch panel, clearly and easy to operate.



### ◆ 花样缝:

由于步进马达控制,可以自己设定产生D1 - D9, 9种不同线迹。

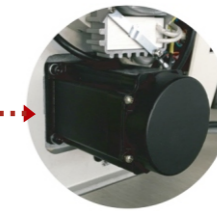
### Special Stitch Pattern:

Controlled by step motor system, machine it can design 9 type stitch patterns by your idea, from D1-D9.

### ◆ 可靠的切线机构: 切线机构采用步进马达驱动,结构简单、切线稳定,方便维护;

### The unique thread trimmer device:

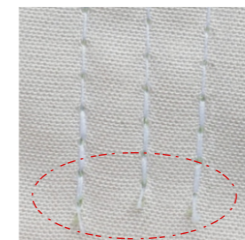
Adopt step motor to drive, stable, light noise and convenience on maintenance.



### ◆ 步进马达双向驱动技术(专利技术): 一个马达完成切线和抬压脚动作。

### Step motor bidirectional driven technology (patent):

One step motor control trimming and pressing foot lifter work



### ◆ 采用剪线凸轮驱动的双动刀剪线结构,可在机针正下方完成剪线,缝纫后的线头最短可达3MM,可有效减少人工剪线的工作量。

Adopt trimming cam control double knife trimmer system, thus realizes after trimmer the thread less than 3mm, effectively reduce manual trimming workload

### ◆ 针送料:

needle feed:

本机采用连杆式针送料结构,针送料方式使送料特性更加稳定,缝层之间不易产生滑移。

The machine adopt connecting rod control feeding system, the needle feeding method make the feeding system more stable, during multi-sewing the fabric not easy to moving.



### ◆ 起缝小鸟巢、不脱线:

Small bird nest:

步进驱动的切线结构,可以使留在针上的线头长度即短又稳定,使第二次起缝时的鸟巢明显变小,且不脱线,实现无需人工再处理的漂亮缝纫品质。

Using the unique trimmer device to achieve small bird nest --step motor trmming system and new Digital ,It make the thread short and stable.



### ◆ 低噪音:

优化的机壳设计和主轴马达结构,机器运转时噪音低;采用步进马达控制加固缝,加固时无声响;采用步进马达控制抬压脚,压脚提升和下降时声音轻柔;采用步进马达驱动切线,切线声音大幅降低;

### Low noise

a. Optimized design of modle body, motor without bearing  
c. Step motor control press foot lifter

b. Step motor control reverse sewing with light noise.  
d. Step motor control trimmer, light noise for trimmer.