

DUMA



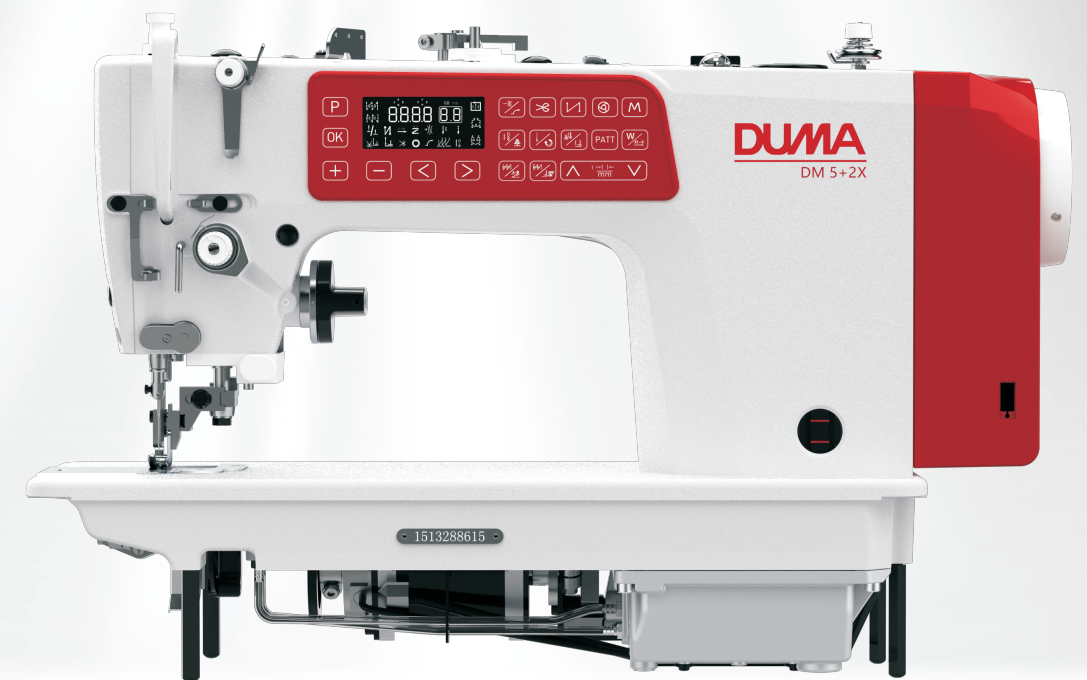
浙江杜马缝纫机股份有限公司

ZHEJIANG DUMA SEWING MACHINE CO., LTD.

地址：浙江省台州市椒江区机场南路58号

电话：0576-89086969 传真：0576-89086999

网址：www.cnduma.com



DM 5+2X

带侧切刀步进三驱平缝机

Stepping three-drive lockstitch sewing machine with side cutter

DM 5+2X

带侧切刀 步进三驱平缝机

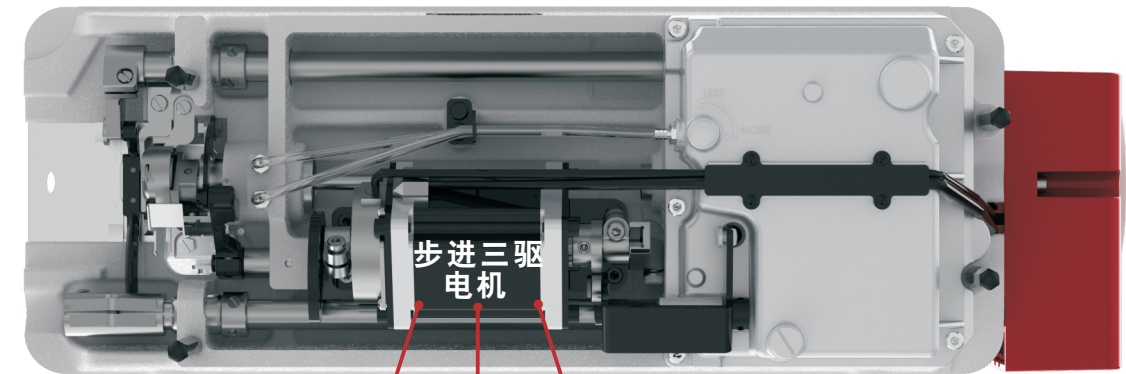
Stepping three-drive
lockstitch sewing machine
with side cutter

Brand new product

颠覆性革新设计，一个步进电机控制针距、剪线以及抬压脚功能，自动倒缝及补针。

采用旋钮开关式切换机构，可以方便地在普通平缝和切边平缝之间切换，针对不同质地和层厚和切缝宽度的面料都能**轻松胜任**。

Subversive innovative design, a stepper motor controls the needle distance, cutting thread and presser foot lift function, automatic reverse stitching, and stitching. Adopt rotary switcher device, users can change sewing model from normal to edge cutting easily. Different material, thickness and edge width are all suitable.



控针距 Control stitch length 剪线 Trimming 抬压脚 Pressure foot up/down



产品功能 Product Features

1- 一体式智能直驱系统,全新按键显示屏:

科学散热循环,机身更纤薄,多功能按键。

Integrated intelligent direct drive system: scientific cooling circulation, slimmer body. New button display.

2- 高品质加固缝线迹:

步进电机控制针距和倒缝:针距精准,倒缝无噪声。

Stepping motor controls the stitch length and reverse stitching: precise stitch length, no noise in reverse stitching.

3- 前、后密针缝功能:

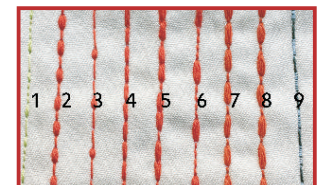
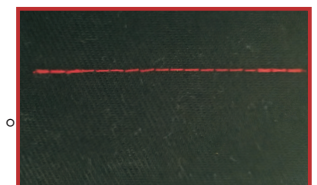
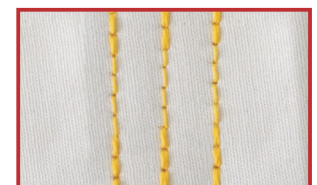
缝制起始/终止端锁小针距线迹,缩短线头长度,防止散出。

With the function of locking for start and after trimming, effectively shorten the stitch length, prevent off-thread.

4- 花样缝功能:

5+2X可以自己设定产生9种不同花样线迹。

5+2X can be set by yourself to produce 9 different pattern stitches.



可离合式切刀开关: 实现切布与非切布缝制功能切换。

Clutchable knife switch: realize the switching of cutting and non-cutting sewing functions.



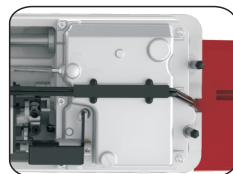
电子膝靠: 不改变工人的操作习惯,实际轻松抬压脚。

Electronic knee control: it's easy to lift the presser foot and no need change worker's sewing habit.



密封油箱设计: 避免油污造成的缝料污染,同时减小整机运作时的噪音。

Sealed oil tank: it can avoid cloth dirty from oil, meantime to reduce noise during working.



电子松线: 相比传统机械松线更加稳定可靠。

Electronic thread tension device: compare with mechanical wire, it's more steable.

