

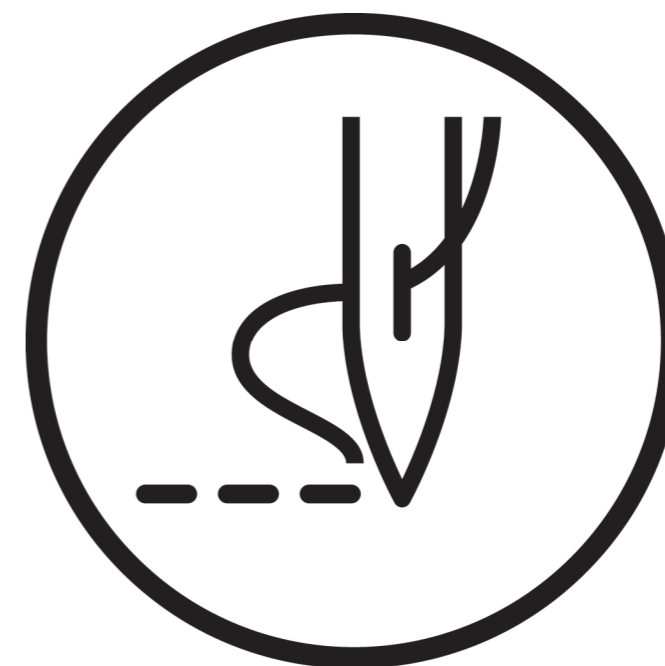
## 18. 附件/Accessories

序号	图号	数量	名称	NAME OF PARTS
1	115150401	2	机头铰链	HEAD HINGE
2	115151701	4	钉	NAIL
3	115150501	2	机头铰链套	RUBBER CUSHION
4	115150601	2	头部防震垫	HEAD CUSHION
5	115150801	2	头部防震垫	HEAD CUSHION
6	115151601	1	螺丝刀(小)	SCREW-DRIVER(S)
7	115151701	1	螺丝刀(中)	SCREW-DRIVER(M)
8	115151801	1	螺丝刀(大)	SCREW-DRIVER(L)
9+	115024106	1包	DP×5 #14	NEEDLE, DP×5 #14
9+	115024109	1包	DP×5 #18	NEEDLE, DP×5 #18
10+	124095501	4	梭芯 (242、245)	BOBBIN (242、245)
10+	125095501	4	梭芯 (272、275)	BOBBIN (272、275)
11	124181101	1	油壶	OILER
12	115151001	1	加油壶组件	OILER ASSY
13	6040101	1	机头罩	HEAD COVER
14	169140901	1	机头撑杆	HEAD REST
15	115151901	1	连杆组件	CONNECTING ROD ASSY
16	124170401	1	橡皮塞7	RUBBER CAP 7
17	124181801	1	油盘	OIL PAN
18	124181901	1	放油口	OIL FEEDING PIPE
19	124182001	4	螺钉ST3.5-9.5	SCREW ST3.5-9.5
20	124182801	1	线架组件 3DR	COTTON STAND ASSY 3DR
21	115060101	1	膝控组件	KNEE LIFTER ASSY
22	169050101	1	电子膝靠组件	ELECTRONIC

## PARTS BOOK

在使用缝纫机之前请阅读本使用说明书。  
 请将本使用说明书放在便于查阅的地方保管。

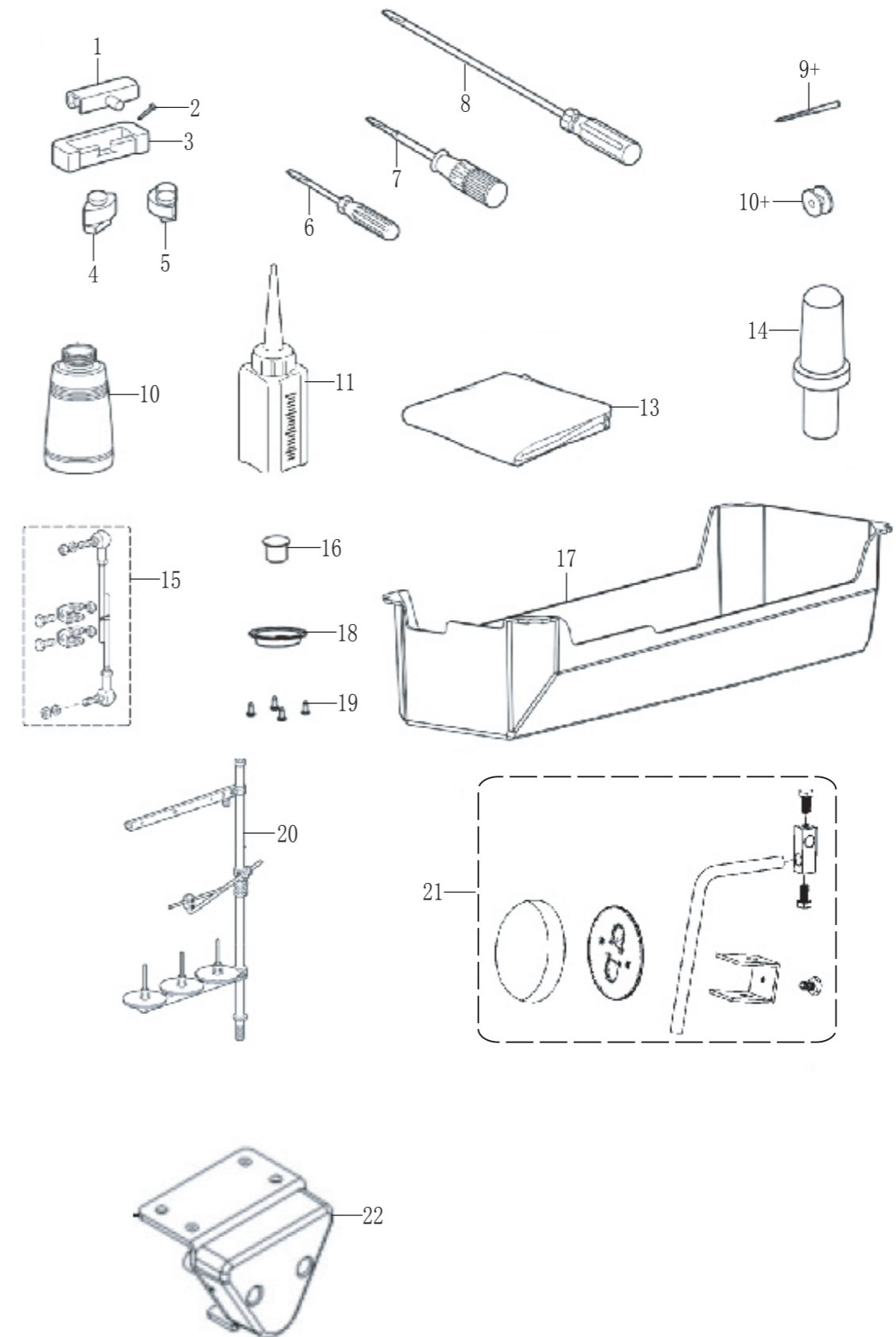
### 双针平缝机



# 目录

1. 机体部分/Machine body .....	2
2. 上轴装置/Upper shaft mechanism .....	4
3. 针杆摆动装置/Needle bar rocking mechanism .....	8
4. 针杆切换操作装置/Needle bar rocking mechanism.....	10
5. 压脚装置/Presser foot mechanism .....	12
6. 送布装置/Feed mechanism .....	14
7. 送布轴装置/Feed shaft mechanism .....	16
8. 定规部件/Gauge parts .....	18
9. 旋梭部件/Rotary hook mechanism .....	20
10. 旋梭装置/Rotary hook mechanism .....	24
11. 下轴装置/Lower shaft mechanism .....	24
12. 供油润滑装置/Lubrication.....	26
13. 穿线装置/Threading mechanism .....	30
14. 绕线装置/Bobbin winder mechanism .....	30
15. 切线装置/Thread trimmer mechanism .....	32
16. 扫线装置/Thread wiper mechanism .....	36
17. 控制箱/Control box .....	36
18. 附件/Accessories.....	38

## 18. 附件/Accessories



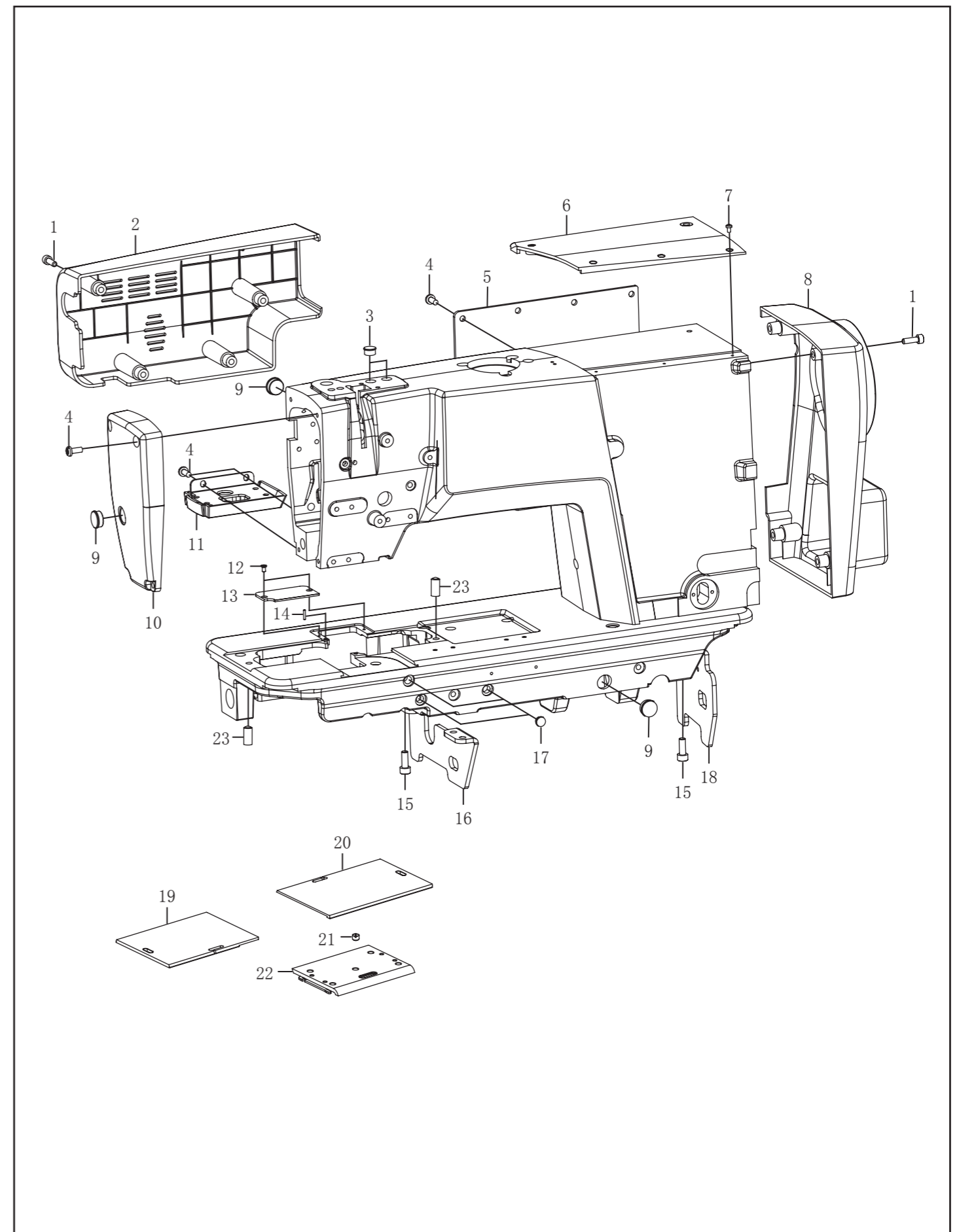
## 16. 扫线装置/Thread wiper mechanism

序号	图号	数量	名称	NAME OF PARTS
1	124160101	1	扫线电磁铁组件	THREAD WIPER SOLENOID ASSY
2	124160201	1	扫线电磁铁曲柄	THREAD WIPER CRANK
3	124150101	1	螺钉M3X12	SCREW, PAN M3X12
4	021300103	1	螺母M3	NUT M3
5	124160501	1	轴位螺钉M4	SCREW M4
6	124094302	1	复位簧	SPRING, COMPRESION
7	062501016	2	螺钉M5X12	SCREW, PAN M5X12
8	124160801	1	扫线连杆组件	THREAD WIPER ROD
9	124160901	2	扫线器	THREAD WIPER
10	021400306	1	螺母M4	NUT M4

## 17. 控制箱/Control box

序号	图号	数量	名称	NAME OF PARTS
1	062501616	5	螺钉M5X16	SCREW PAN M5X16
2	124170701	1	电控箱组件	ELECTRONIC CONTROL BOX ASSY
3	124170902	1	按钮组件	BUTTON COMPONENT
4		4	木螺钉	WOOD SCREW
5	180050201	1	操作屏 7	OPERATING SCREEN 7
6	124172101	1	操作盒外壳	OPERATING BOX SHELL
7	062501016	2	螺钉M5X10	SCREW, PAN M5X10
8	025050132	2	垫片M5	WASHER M5
9	102110302	1	电线压板	TUBING CLAMP
10	115140301	3	电线夹U2	TUBING CLAMP U2
11	115131001	1	电线夹U1	TUBING CLAMP U1

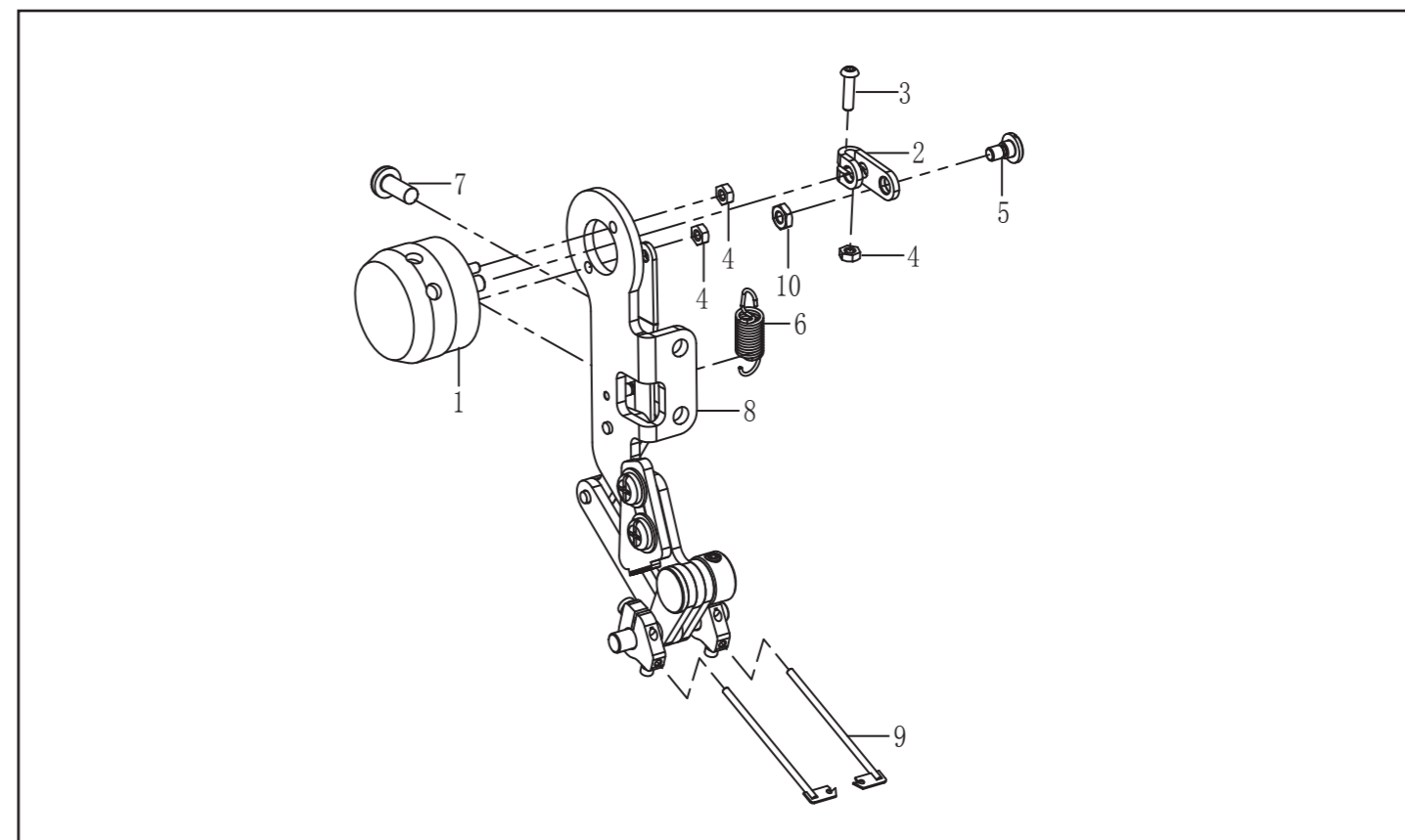
## 1. 机体部分/Machine body



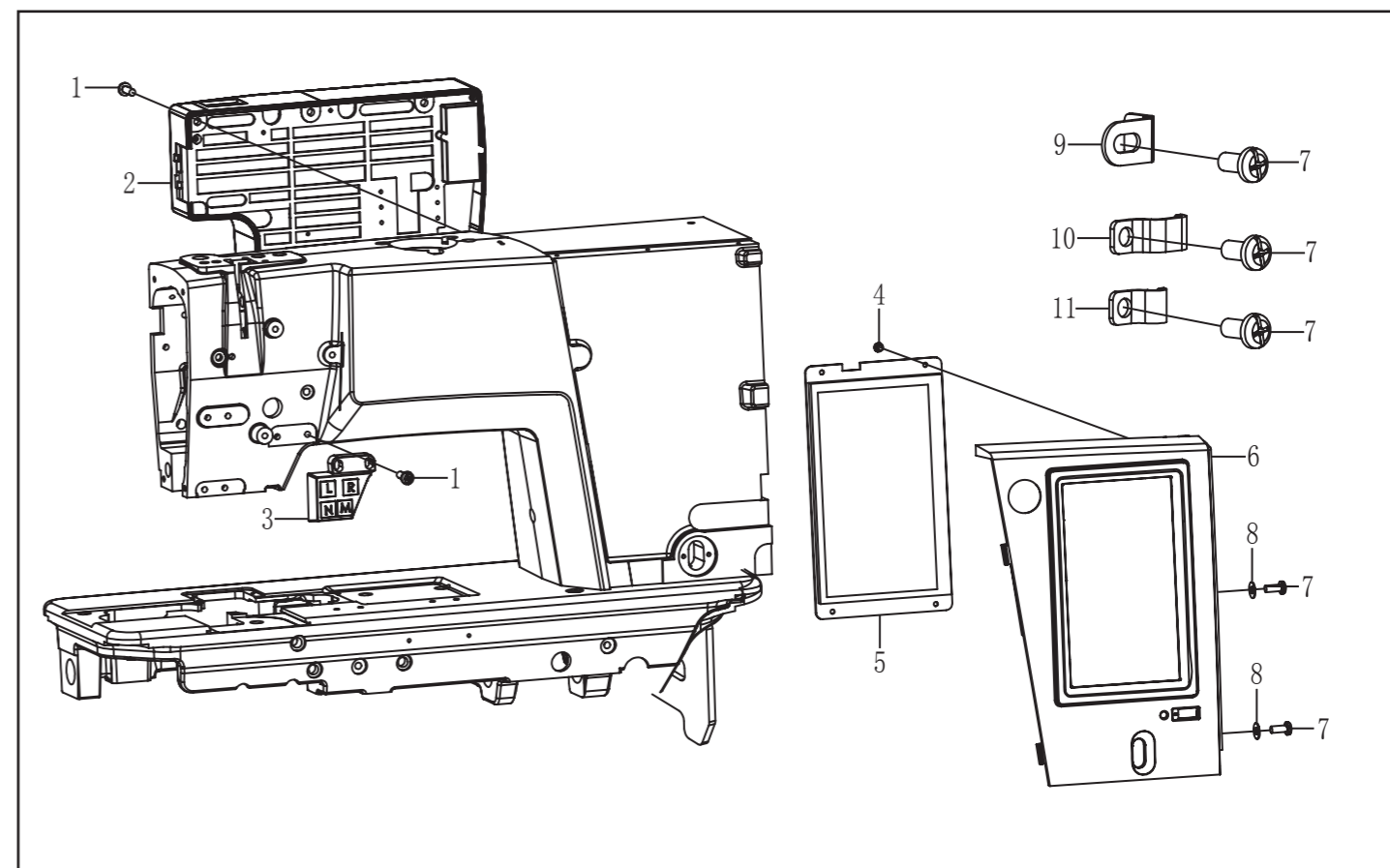
# 1. 机体部分/Machine body

序号	图号	数量	名称	NAME OF PARTS
1	018502032	8	螺钉M5×20	SCREW PAN M5×20
2	124012202	1	电磁铁罩	ELECTROMAGNET COVER
3	115011001	2	橡皮塞10.5	RUBBER CAP 10.5
4	062501016	15	螺钉M5×10	SCREW PAN M5×10
5	115010401	1	后盖板	REAR COVER
6	124013301	1	上盖	UPPER COVER
7	168012501	4	螺钉M3×8	SCREW PAN M3×8
8	124011102	1	马达罩	MOTOR COVER
9	115010701	3	橡皮塞15.5	RUBBER CAP 15.5
10	124010302	1	面板	FACE PLATE
11	124010402	1	机头灯组件	HEAD LAMP ASSY
12	064300632	2	螺钉M3×6	SCREW PAN M3×6
13	124012501	1	后推板	SLIDE PLATE
14	124011301	1	针板定位销	POSITIONING PIN
15	018061232	5	螺钉M6×12	SCREW PAN M6×12
16	124011902	1	左支撑板	SUPORRT PLATE L
17	115012701	3	橡皮塞8.5	RUBBER CAP 8.5
18	124012001	1	右支撑板	SUPORRT PLATE R
19	124011401	1	推板L	SLIDE PLATE L
20	124011501	1	推板R	SLIDE PLATE R
21	124012601	1	螺钉SM5. 16×32-6	SCREW PAN SM5. 16×40-6
22	124013001	1	推板F	SLIDE PLATE F
23	124013101	2	波珠螺钉M5×10	SCREW PAN M5×10

# 16. 扫线装置/Thread wiper mechanism



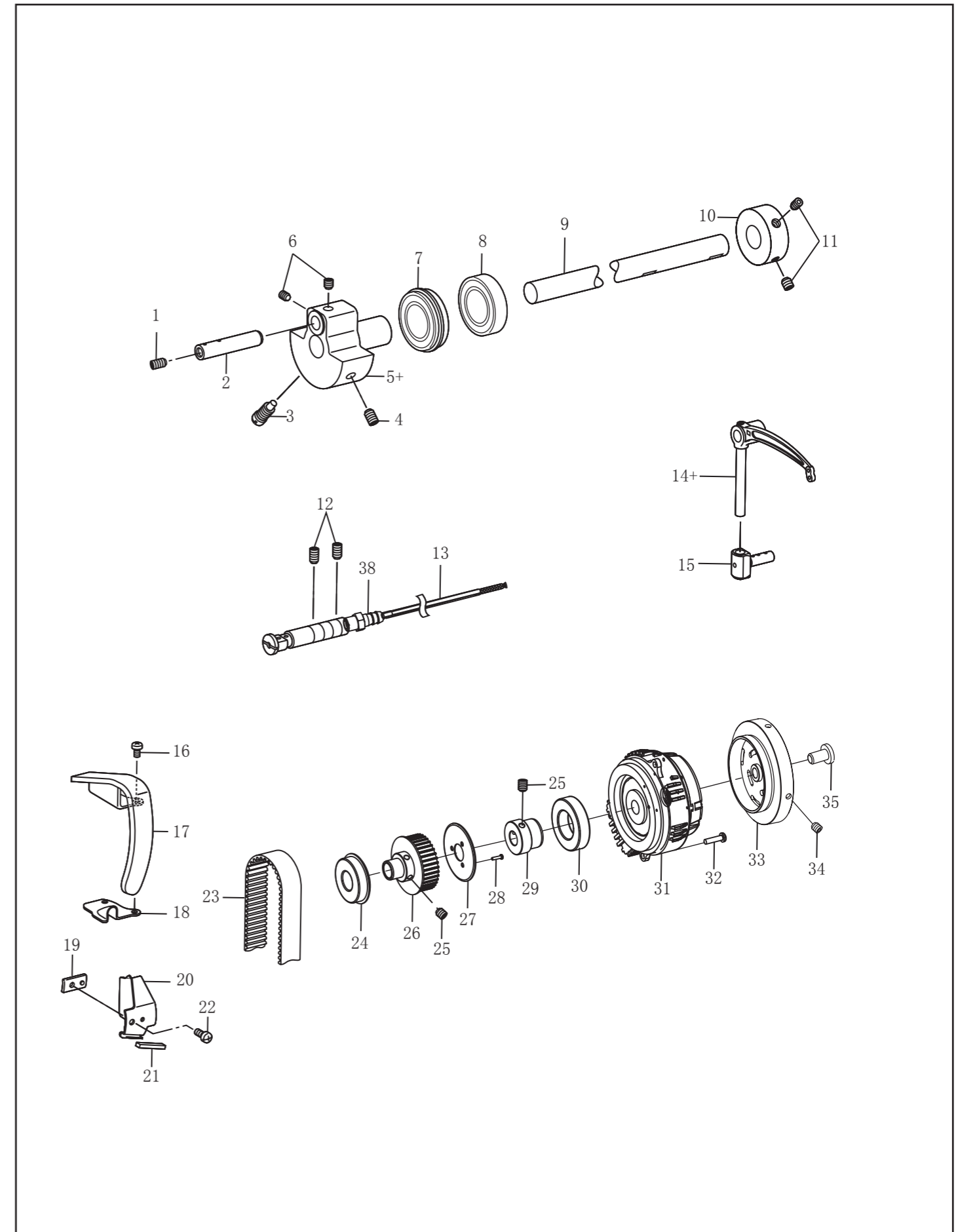
# 17. 控制箱/Control box



## 15. 切线装置/Thread trimmer mechanism

序号	图号	数量	名称	NAME OF PARTS
34	062300516	2	螺钉M3×5	SCREW M3×5
35	124153201	1	磁铁安装座	SOLENOID SETTING PLATE
36	018300832	3	螺钉M3×8	SCREW M3×8
37	018301632	1	螺钉M3×16	SCREW M3×16

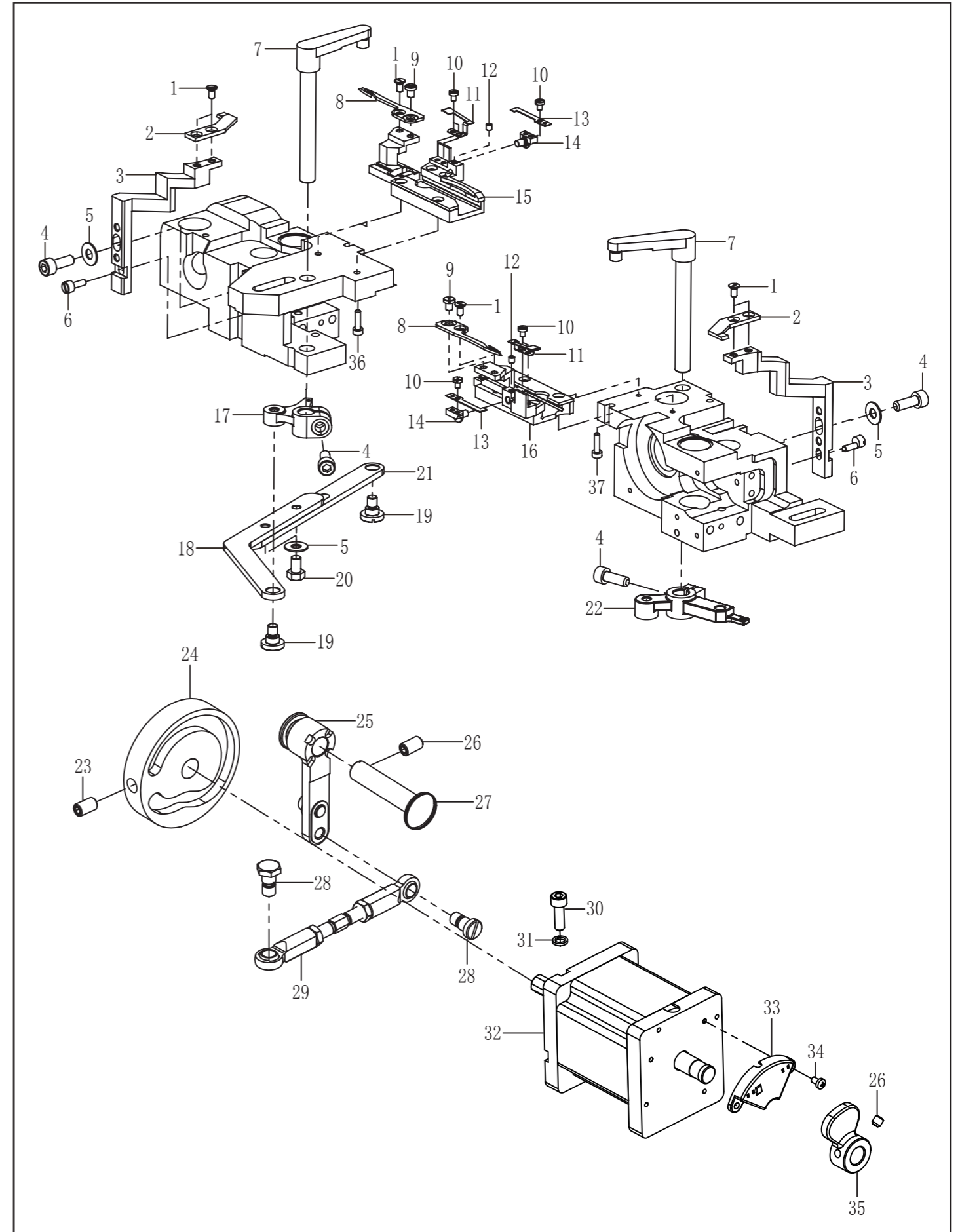
## 2. 上轴装置/Shaft mechanism



## 2. 上轴装置/Upper shaft mechanism

序号	图号	数量	名称	NAME OF PARTS
1	012500532	1	固定螺钉M5×5	SCREW PAN M5×5
2	124020201	1	针杆曲柄轴	CRANK SHAFT
3	124020301	1	针杆曲柄轴螺钉M8	SCREW PAN M8
4	124020201	1	螺钉M6×0.75-10	SCREW PAN M6×.75-10
5+	124020501	1	挑线杆曲柄	THREAD TAKE-UP CRANK
5+	125020501	1	挑线杆曲柄	THREAD TAKE-UP CRANK
6	169034401	2	固定螺钉M6×0.75-6	SET SCREW PAN M6×0.75-6
7	115024501	1	轴承6004ZZNR	BALL BEARING, 6004ZZNR
8	124020801	1	轴承6004ZZ	BALL BEARING, 6004ZZ
9	124020901	1	上轴DD	UPPER SHAFT, DD
10	115021201	2	卷线驱动轮	BOBBIN WINDER DRIVING WHEEL
11	169034401	2	固定螺钉M6×0.75-6	SCREW PAN M6×0.75-6
12	012061036	1	固定螺钉M6×10	SCREW PAN M6×10
13	124021301	1	挑线杆支撑轴	THREAD TAKE-UP S-SHAFT UNIT
14+	124021401-1	1	挑线杆S5-L	T-TAKE-UP LEVER ASSY S5-L
14+	125021401	1	挑线杆 R	T-TAKE-UP LEVER ASSY R
15	124021501	1	挑线杆接头滑块组件3	T-TAKE-UP SLIDE BLOCK
16	062500816	2	螺钉M5×8	SCREW PAN M5×8
17	124021701	1	挑线杆防护罩	THREAD TAKE-UP LEVER COVER
18	124021801	1	防尘盖	DUST COVER
19	124021901	1	遮掩板支座	HOLDER, SHELTER PLATE
20	124022001	1	遮掩板	SHELTER PLATE
21	124022101	1	油毡	FELT
22	062501016	1	螺钉M5×10	SCREW PAN M5×10
23	124022301	1	同步皮带	TIMING BELT
24	124022401	1	轴承6204ZZNR	BALL BEARING, 6204ZZNR
25	169034401	3	固定螺钉M6×0.75-6	SCREW PAN M6×0.75-6
26	124022601	1	同步轮 U DD	TIMING PULLEY, U DD
27	124022701	1	同步轮U法兰	PULLEY U FLANGE
28	062401012	3	螺钉M4×10	SCREW PAN M4×10
29	124022901	1	轴承套	BEARING SLEEVE
30	124023001	1	轴承6006ZZ	BALL BEARING 6006ZZ

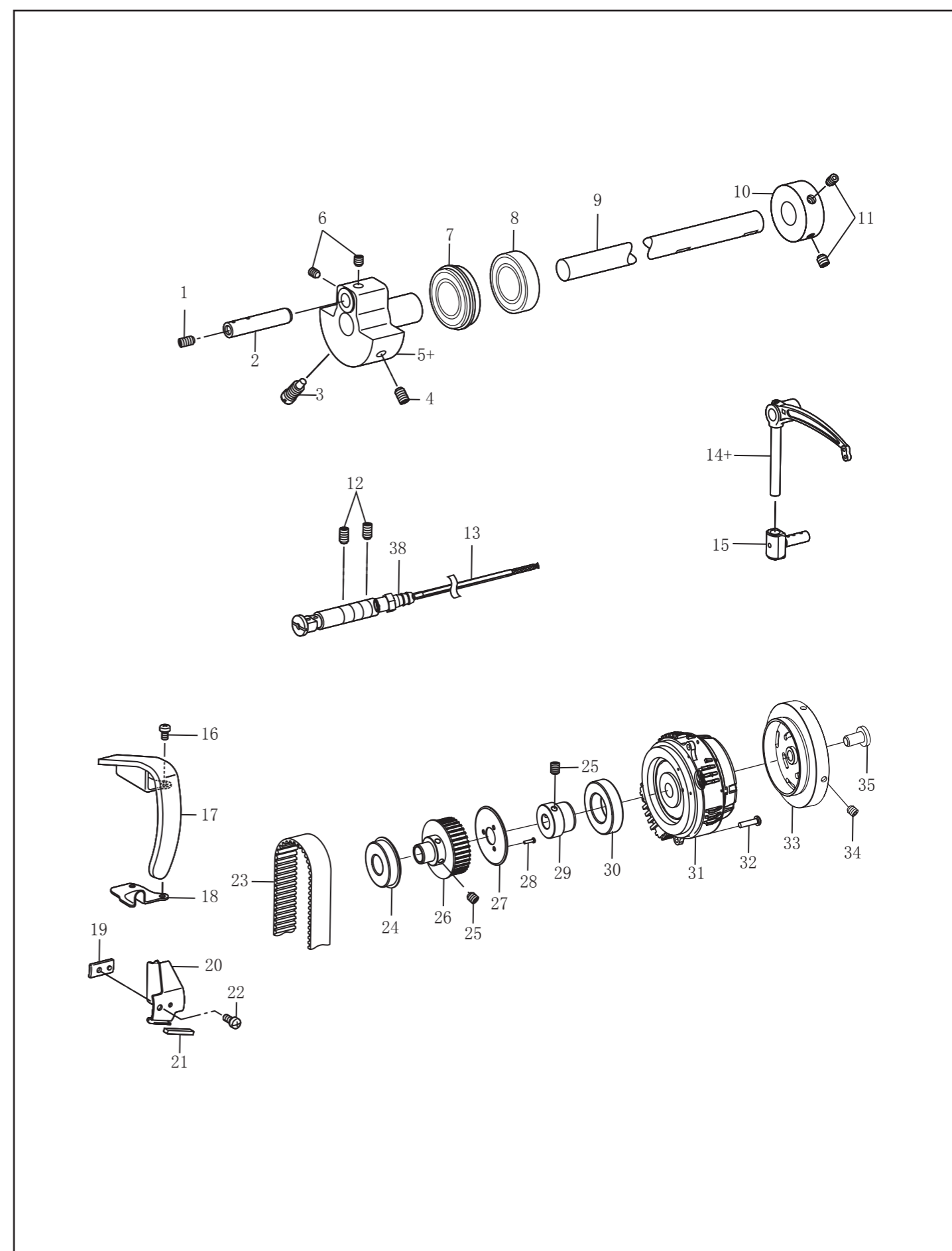
## 15. 切线装置/Thread trimmer mechanism



## 15. 切线装置/Thread trimmer mechanism

序号	图号	数量	名称	NAME OF PARTS
1	124155901	6	螺钉SM3.57×40-5	SCREW SM3.57×40-5
2	124156001	2	定刀	FIXED KNIFE
3	124156101	1	定刀架	FIXED KNIFE BASE
4	017501032	2	螺钉M5×10	SCREW M5×10
5	025050236	2	垫片M5	WASHER M5
6	124156201	2	调节销	FIXED KNIFE BASE ADJUST
7	124156301	2	动刀杆	KNIFE BASE SHAFT ASSY
8	124156401	2	动刀	DRIVING KNIFE
9	124156501	2	螺钉SM3.57×40-4.5	SCREW SM3.57×40-4.5
10	124156601	6	螺钉SM3.57×40-5	SCREW SM3.57×40-5
11	124156702	2	弹簧片	CLAMP
12	012300332	2	螺钉M3×3	SCREW M3×3
13	124156801	2	弹簧片	CLAMP
14	124156901	2	弹簧片安装支座	CLAMP SPRING BASE
15	124157001	1	动刀座组件 L	KNIFE SUPPORT ASSY L
16	124157101	1	动刀座组件 R	KNIFE SUPPORT ASSY R
17	124157201	1	切线杠杆 L	THREAD TRIMMER LEVER L
18	124157301	1	切线连杆 L	T-TRIMMER CONNECTIONG ROD L
19	124150801	2	轴位螺钉 M5	SCREW M5
20	017500812	2	螺钉M5×8	SCREW M5×8
21	124150601	1	切线连杆 R	T-TRIMMER CONNECTIONG ROD R
22	124157501	1	切线杠杆 R	THREAD TRIMMER LEVER R
23	014601016	2	螺钉M6×10	SCREW M6×10
24	124152302	1	切线凸轮	THREAD TRIMMER CAM
25	124052802	1	抬压曲柄连杆组件	P-BAR LIFTER CRANK LEVER
26	012500536	3	螺钉M5×5	SCREW M5×5
27	124052902	1	抬压曲柄连杆销	PIN
28	124151101	2	段螺钉M6	SCREW M6
29	124159001	1	球接头组件	ROUND JOINT ASSY
30	018501632	4	螺钉M5×16	SCREW M5×16
31	028050246	4	弹簧垫片	WASHER 5
32	124152502	1	步进电机86	MOTOR
33	124153201	1	感应器组件	SENEOR ASSY

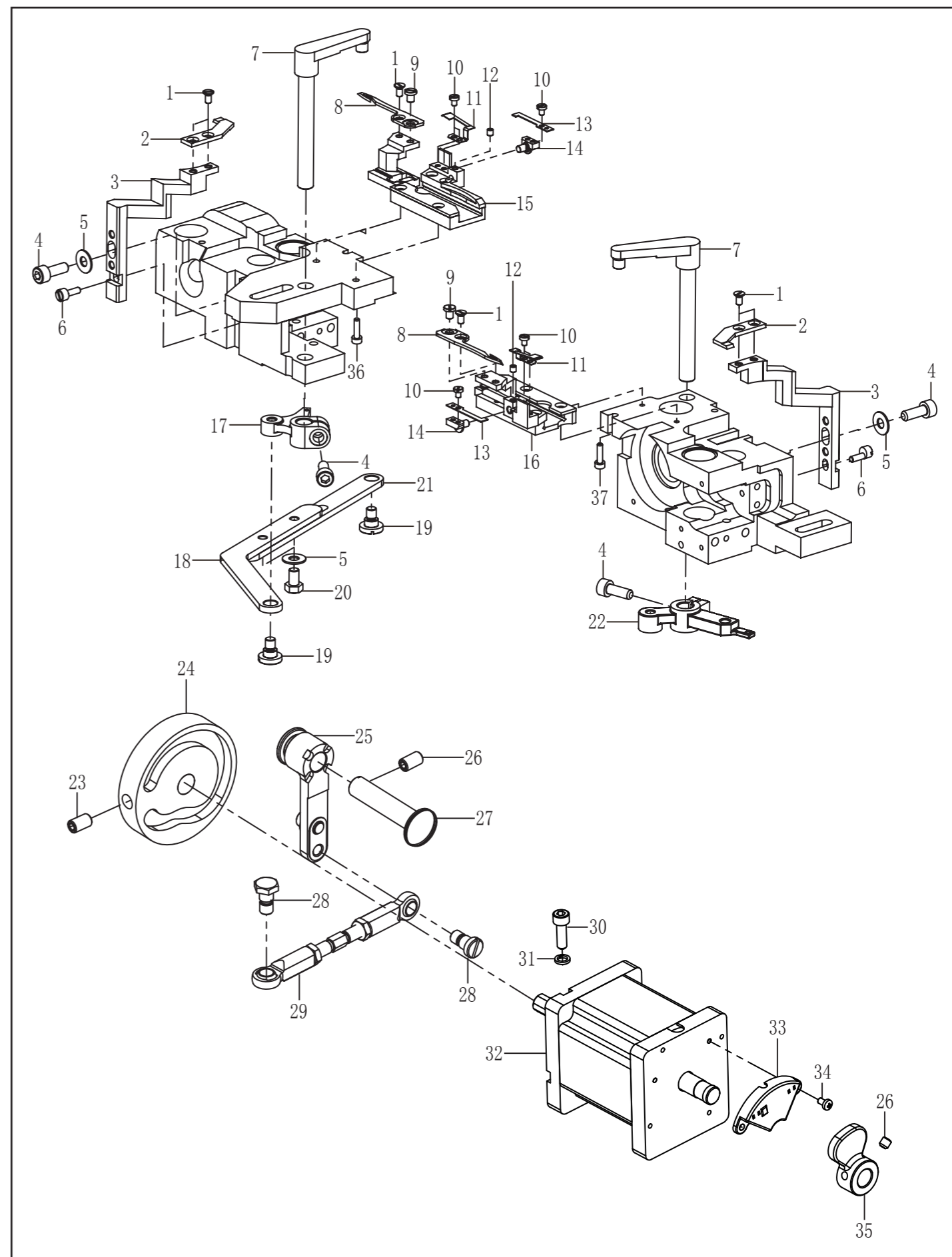
## 2. 上轴装置/Upper shaft mechanism



## 2. 上轴装置/Upper shaft mechanism

序号	图号	数量	名称	NAME OF PARTS
29	124022901	1	轴承套	BEARING SLEEVE
30	124023001	1	轴承6006ZZ	BALL BEARING, 6006ZZ
31	124025101	1	马达组件	SERVO MOTOR ASSY
32	062502016	3	电机安装螺钉M5×20	SCREW M5×20
33	124025202	1	手轮	FILM ROTATING AND ENCODER
34	014760632	2	螺钉SM5.95×28-8	SCREW PAN SM5.95×28-8
35	115025401	1	螺钉SM8.37	HAND WHEEL ASSY
36	124024001	1	油嘴	NOZZLE

## 15. 切线装置/Thread trimmer mechanism





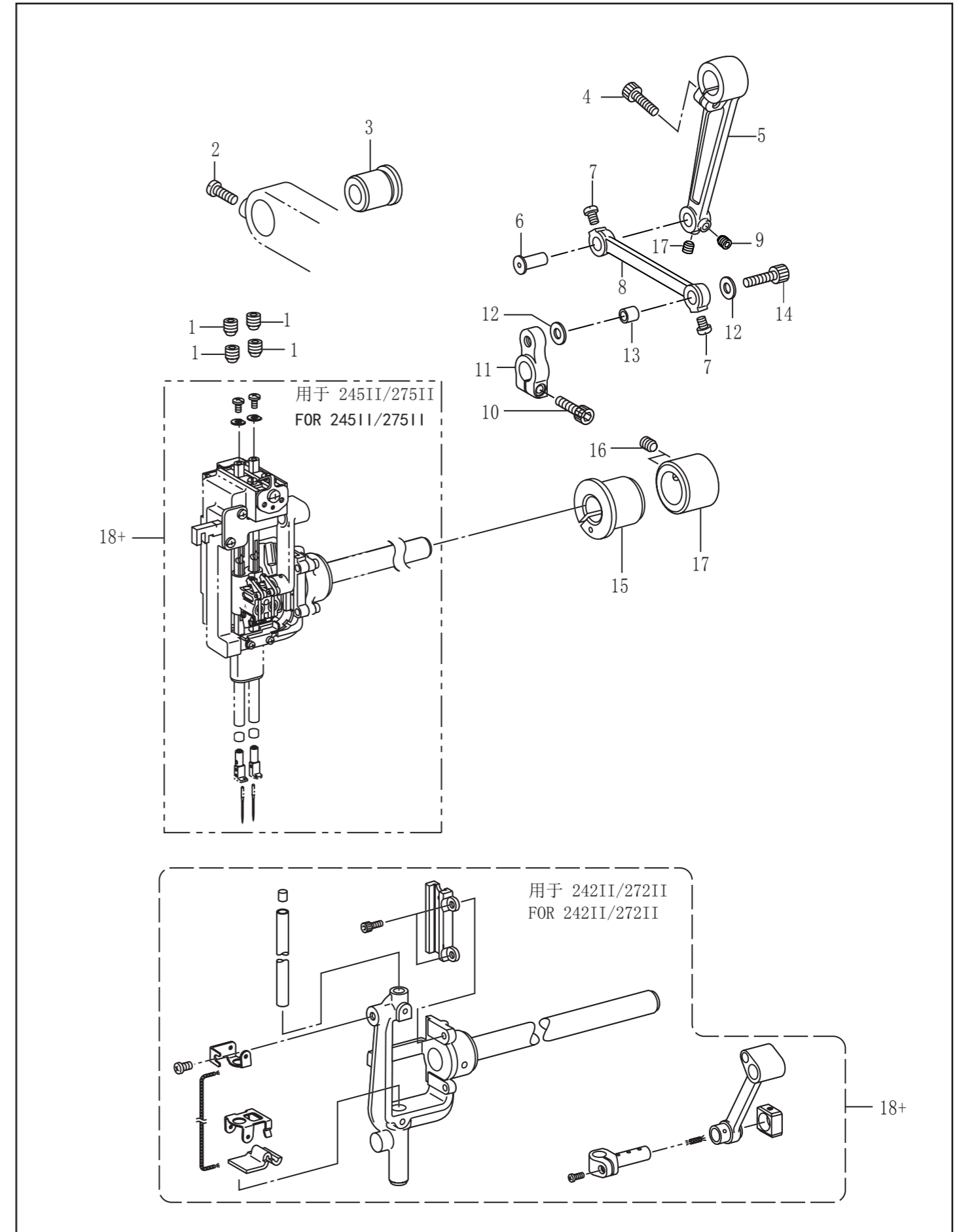
### 13. 穿线装置/Threading mechanism

序号	图号	数量	名称	NAME OF PARTS
1	124130101	1	面线调节组件	UPPER THREAD TENSION ASSY
2	062500816	3	螺钉M5×8	SCREW PAN M5×8
3	124130301	1	松线轴	TENSION RELEASE CRANK
4	017400616	2	螺钉M4×6	SCREW PAN M4×6
5	124130601	1	松线电磁铁安装板	SOLENOID SETTING PLATE
6	691220000	1	松线电磁铁	TENSION RELEASE SOLENOID
7	017400816	1	螺钉M4×8	SCREW PAN M4×8
8	021400306	1	螺母M4	NUT1, M4
9	025040336	1	垫片M4	WASHER, M4
10	169093901	1	缓冲垫	CUSHION
11	062501216	2	螺钉M5×12	SCREW PAN M5×12
12	124131301	1	线导向M	THREAD GUIDE, M: ARM
13	124131401	2	螺钉M5×8	SCREW PAN M5×8
14	124131501	1	线导向D	THREAD GUIDE, D: ARM
15	124131601	1	线导向D油毡	FELT

### 14. 绕线装置/Bobbin winder mechanism

序号	图号	数量	名称	NAME OF PARTS
1	115100101	1	绕线器组件	BOBBIN WINDER UNIT
2	115100501	3	固定螺钉M5	BOBBIN WINDER FIXED SCREW
3	101022801	2	螺钉SM3.57	SCREW PAN SM3.57
4	101022701	1	切刀	KNIFE
5	124140501	1	绕线器夹线组件	BOBBIN WINDER TENSION ASSY

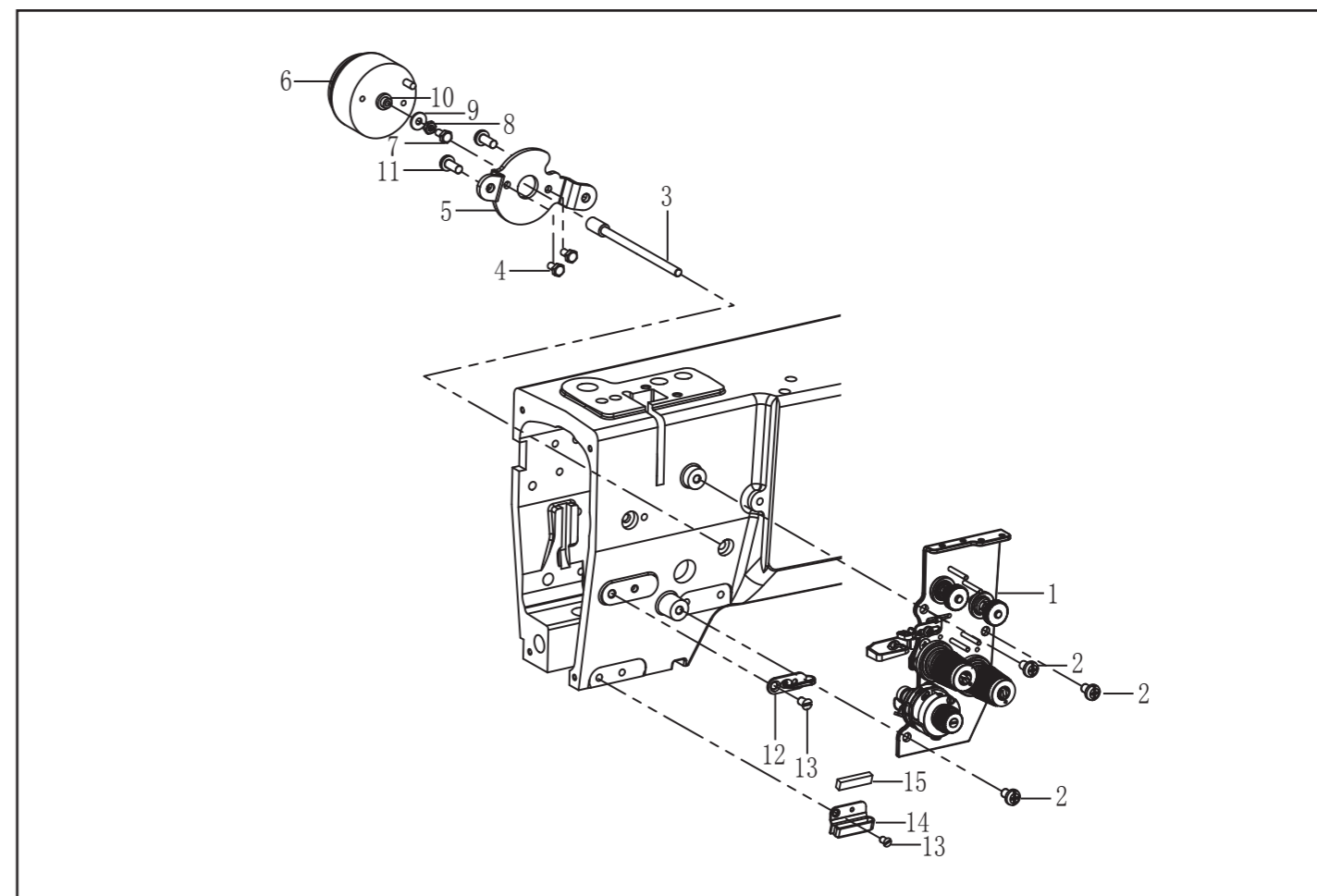
### 3. 针杆摆动装置/Needle bar rocking mechanism



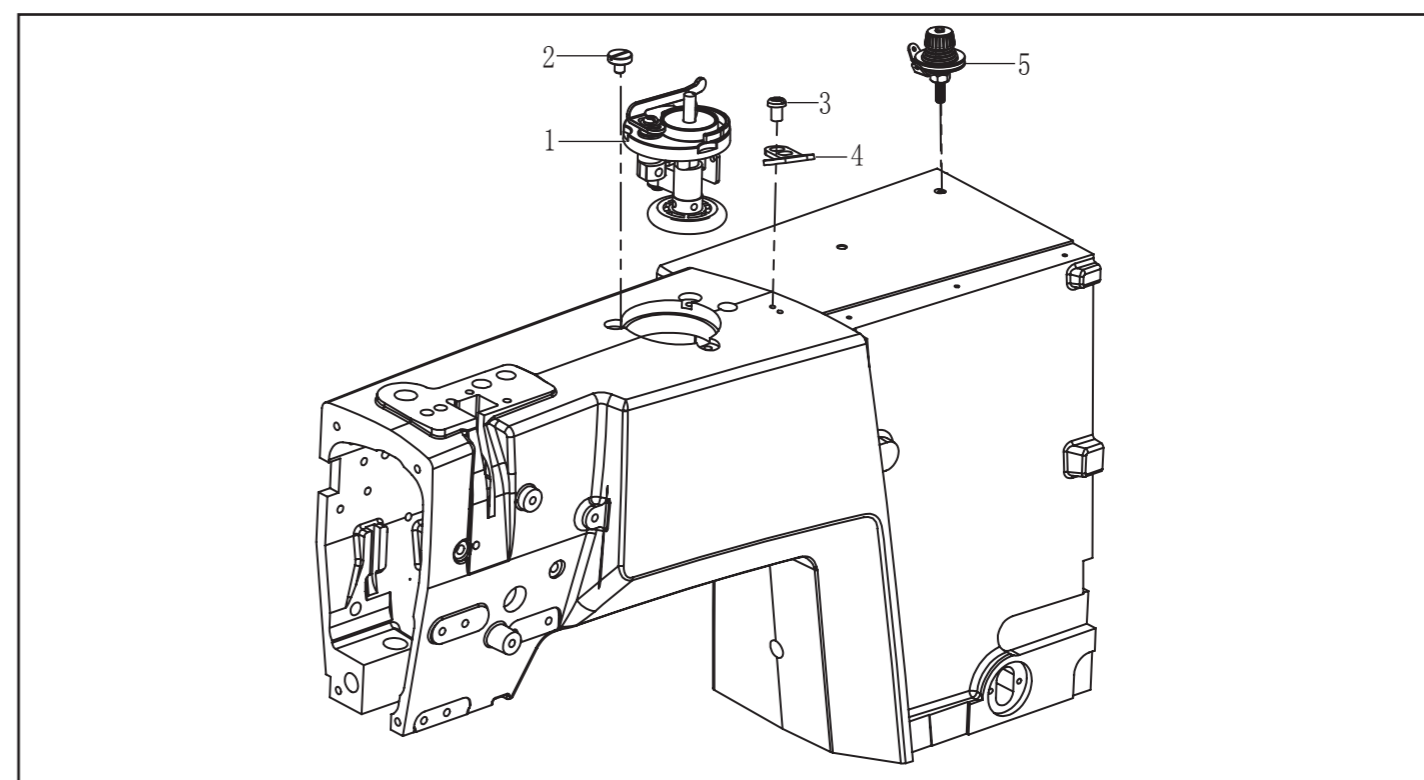
### 3. 针杆摆动装置/Needle bar rocking mechanism

序号	图号	数量	名称	NAME OF PARTS
1	014080832	4	固定螺钉M8×8	SET SCREW SOCKET (FT) M8×8
2	062061616	1	螺钉M6×16	SCREW PAN M6×16
3	124030301	1	摆动轴轴套R	BUSH R
4	018062036	1	螺钉M6×20	SCREW PAN M6×20
5	124030501	1	针杆摆动连杆	NEEDLE BAR ROCKER LEVER
6	124030601	1	摆动连杆销	LINK SHAFT N-BAR ROCKER
7	062060516	2	螺钉M6×5	SCREW PAN M6×5
8	124030801	1	针杆摆动杆	ROCKER LINK N-BAR
9	169034401	2	螺钉M6×0.75-6	SCREW PAN M6×0.75-6
10	018062036	1	螺钉M6×20	SCREW PAN M6×20
11	124031101	1	针杆摆动臂	NEEDLE BAR ROCK ARM
12	124031201	2	垫圈	WASHER PLAIN
13	124031301	1	摆动连杆轴套	ZIGZAG LINK BUSH
14	018062532	1	螺钉M6×25	SCREW PAN M6×25
15	124031501	1	轴套L	BUSH L
16	1690034401	2	固定螺钉M6×0.75-6	SET SCREW M6×0.75-6
17	124031701	1	紧圈	SET SCREW COLLAR
18+	124031801	1	针杆摆轴复合件 245II	NEEDLE BAR ROCKER SHAFT UNIT
18+	125031801	1	针杆摆轴复合件 242II	NEEDLE BAR ROCKER SHAFT UNIT

### 13. 穿线装置/Threading mechanism



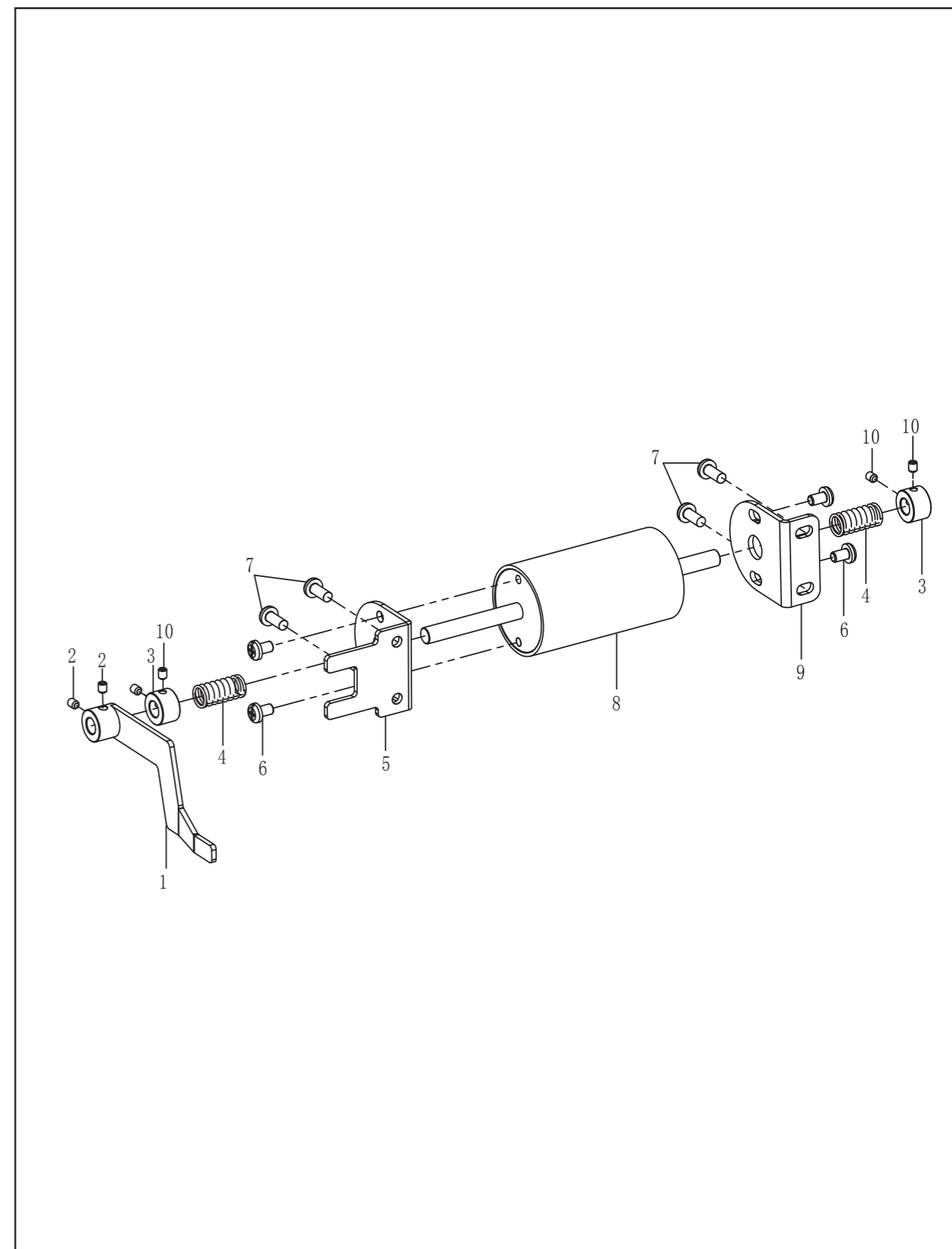
### 14. 绕线装置/Bobbin winder mechanism



## 12. 供油润滑装置/Lubrication

序号	图号	数量	名称	NAME OF PARTS
34	168063401	1	油量视窗	OIL GAGE WINDOW
35	124121001	1	浮球组件	FLOAT ASSY
36	081022870	1	O型圈S22	O RING S22
37	124121201	1	副油罐	SUB TANK
38	115080501	1	供油嘴	NOZZLE
39	168063501	1	油窗防油垫	OIL WINDOW GUSHION
40	115110401	2	螺钉SM3.57	SCREW PAN SM3.57
41	124123601	2	油嘴	NOZZLE
42	124070501	1	油盒安装板	OIL TANK MOUNTING PLATE
43	124131401	2	螺钉 M5×8	SCREW PAN M5X8

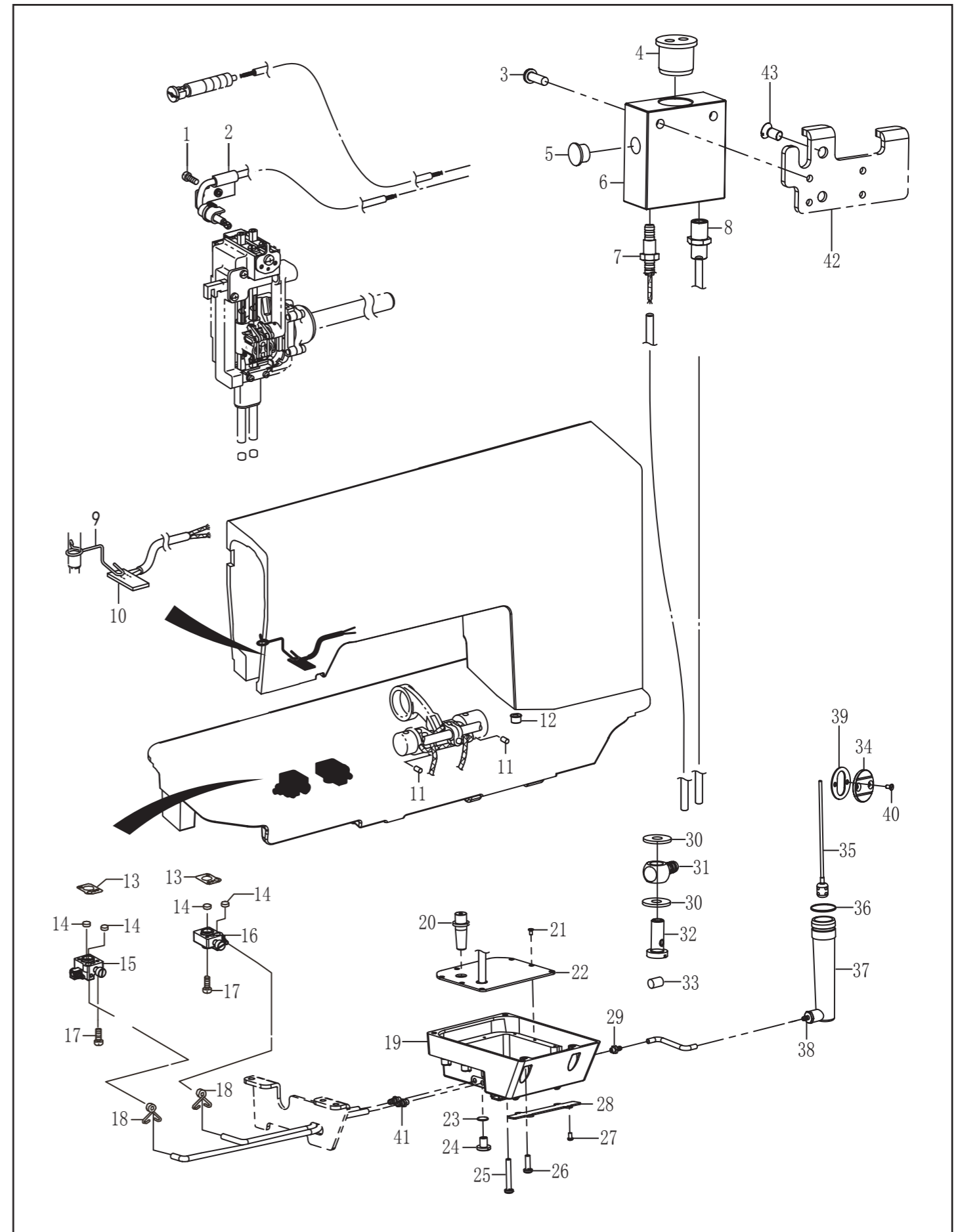
## 4. 针杆切换操作装置/Needle bar rocking mechanism



#### 4. 新针杆切换操作装置/Needle bar rocking mechanism

序号	图号	数量	名称	NAME OF PARTS
1	125040101	1	分离板	SEPARATION PLATE
2	012500636	2	固定螺钉M5×6	SCREW PAN M5×6
3	125040301	2	紧圈	SET SCREW COLLAR
4	125040401	2	弹簧	SPRING, EXTENSION
5	125040501	1	电磁铁安装板左	SOLENOID SETTING PLATE L
6	062501216	4	螺钉M5×12	SCREW PAN M5×12
7	062500816	4	螺钉M5×8	SCREW PAN M5×8
8	125040801	1	分离电磁铁组件	SEPARATING ELECTROMAGNET ASSY
9	125040901	1	电磁铁安装板右	SOLENOID SETTING PLATE R
10	012400532	4	固定螺钉M4×5	SCREW PAN M4×5

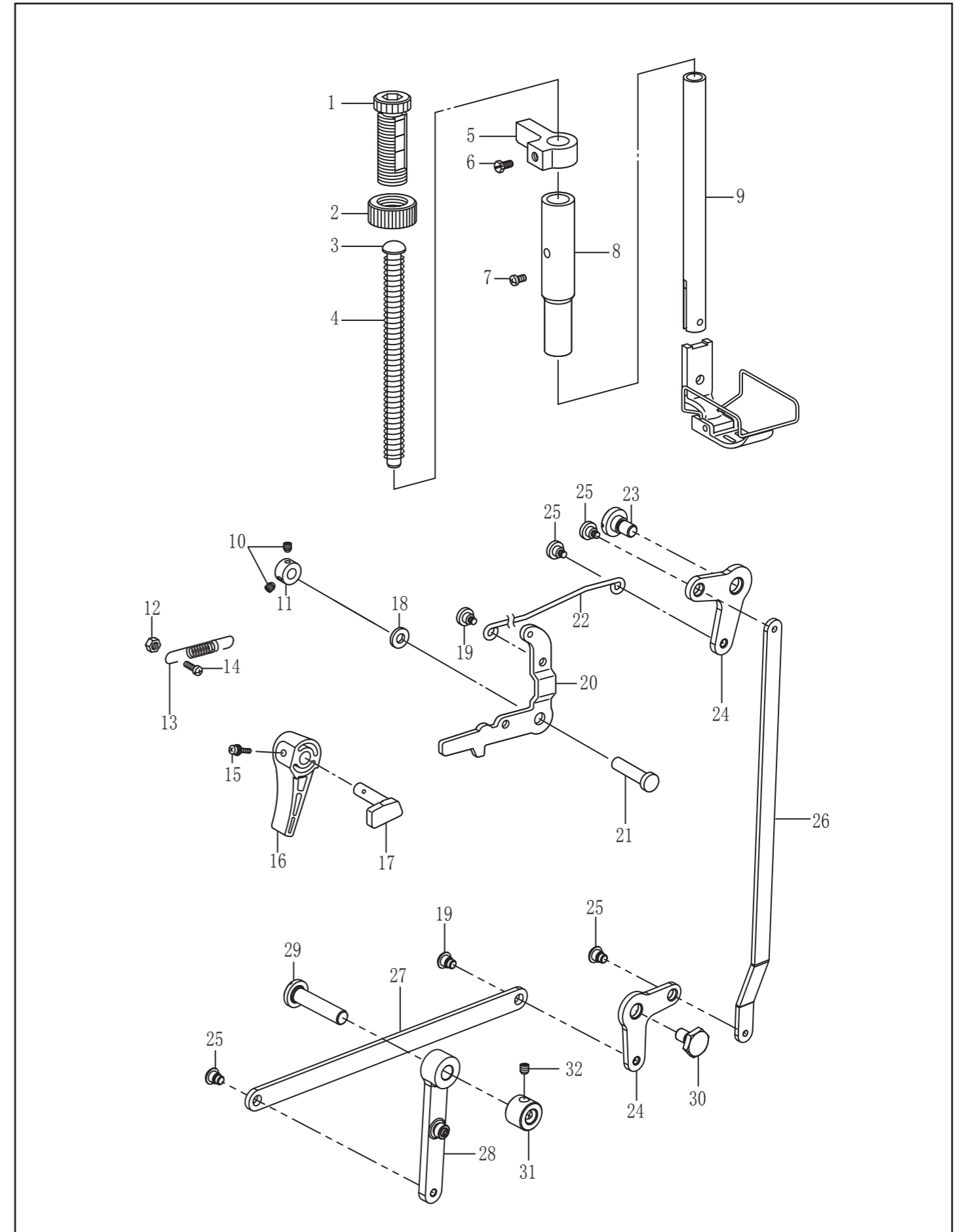
#### 12. 供油润滑装置/Lubrication



## 12. 供油润滑装置/Lubrication

序号	图号	数量	名称	NAME OF PARTS
1	062501016	1	螺钉M5×10	SCREW PAN M5X10
2	124120301	1	油管支架	OIL SUPPORT
3	062401016	1	螺钉M4×10	SCREW PAN M4X10
4	101012701	1	电线过线圈	RUBBER CAP
5	115012401	1	橡皮塞8	RUBBER CAP 8
6	124125502	1	机头储油盒	ENGINE OIL BOX
7	168062601	1	油嘴	NOZZLE
8	124125601	1	油嘴 8.6	NOZZLE 8.6
9	124120601	1	油毡压架	FELT SUPPORT
10	124120701	1	油毡	FELT
11	124121801	2	油毡	FELT
12	124121701	1	加油橡皮塞	RUBBER CAP
13	124125001	2	旋梭基座D垫片	ROTARY HOOK BASE D PACKING
14	124124701	4	油毡	FELT
15	124123701	1	左集油器组件	OIL COLLECTOR ASSY L
16	124123801	1	右集油器组件	OIL COLLECTOR ASSY R
17	062401216	4	螺钉M4×12	SCREW PAN M4X12
18	124121401	6	油管夹	OIL PIPE CLAMP
19	124122901	1	油盒	OIL BOX
20	124122501	1	长橡胶柱	RUBBER CAP
21	064300612	8	螺钉M3×6	SCREW PAN M3X6
22	124122701	1	油盒盖	OIL BOX COVER
23	168063001	1	O型圈	O RING
24	115080901	1	螺钉M8	SCREW PAN M8
25	018503532	2	螺钉M5×35	SCREW PAN M5X35
26	018501632	2	螺钉M5×16	SCREW PAN M5X16
27	062350612	4	螺钉M3.5×6	SCREW PAN M3.5X6
28	124123201	1	电线压板	WIRE PLATE
29	115080401	1	供油嘴	NOZZLE
30	124125401	2	供油嘴垫片	NOZZLE GASKET
31	124125301	1	供油嘴	NOZZLE
32	124125201	1	供油螺钉	SUPPLY SCREW
33	124120801	1	油毡	FELT

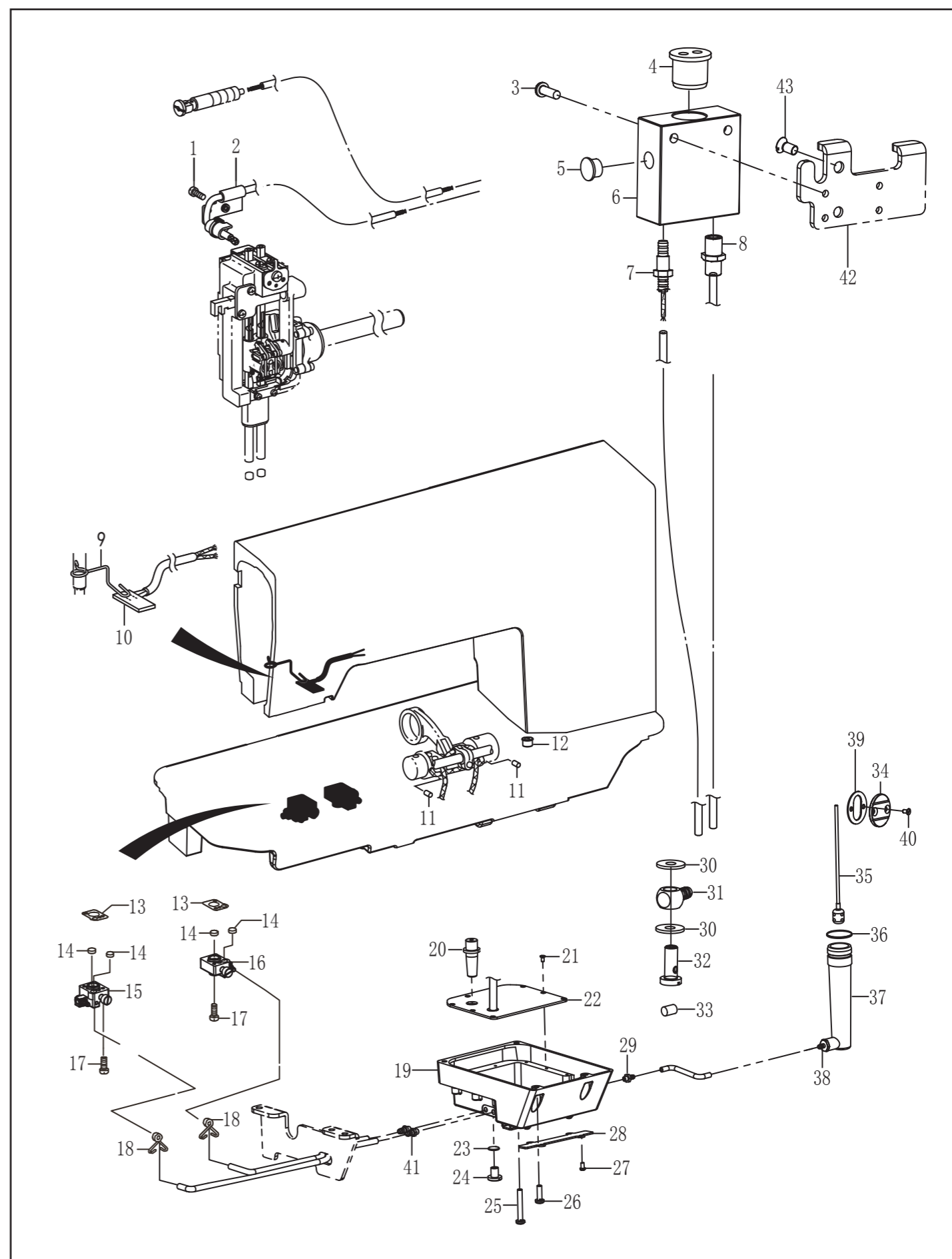
## 5. 压脚装置/Presser foot mechanism



## 5. 压脚装置/Presser foot mechanism

序号	图号	数量	名称	NAME OF PARTS
1	124050101	1	调节螺栓M14	PRESSER ADJUSTING SCREW, M14
2	124050201	1	调节螺母M14	ADJUST SCREW NUT
3	115030401	1	弹簧导杆	SPRING GUIDE
4	115030503	1	压紧弹簧	PRESSER BAR SPRING
5	124050501	1	压紧抱箍	GUIDE BRACKET, P-BAR
6	124050601	1	螺栓M6	BOLT (CP) M6
7	062500816	1	螺钉M5×8	SCREW PAN M5×8
8	124050801	1	压杆轴套	PRESSER BAR BUSH
9	124050901	1	压紧杆	PRESSER BAR
10	012500536	2	固定螺钉M5×5	SCREW PAN M5×5
11	124051101	1	紧圈	SET SCREW COLLAR
12	021500206	1	螺母M5	NUT M5
13	124051301	1	弹簧	SPRING, EXTENSION
14	062501216	1	螺钉M5×12	SCREW PAN M5×12
15	115032001	1	螺钉 M3.5×12	SCREW PAN (S/P W) M3.5X12
16	115031901	1	抬压脚扳手	LIFTING LEVER
17	124051701	1	压杆提升曲柄	PRESSER BAR LIFTING CRANK
18	124051801	1	垫圈	WASHER, PLAIN
19	124051901	1	段螺钉M5	SHOULDER SCREW M5
20	124052001	1	抬压脚连杆	PRESSER BAR LIFTING LEVER
21	124052101	1	提升杠杆销	P-BAR LIFTING LEVER SHAFT
22	124052201	1	膝控连杆	KNEE LIFTER CONNECTING ROD
23	150345011	1	段螺钉SM6.35×28	SHOULDER SCREW SM6.35×28
24	169032101	2	膝控提升杠杆	KNEE LIFTER LEVER
25	115034301	4	段螺钉SM4.76×32	SHOULDER SCREW SM4.76×32
26	124052601	1	膝控提升拉杆	KNEE LIFTER BAR
27	124052701	1	膝控提升短拉杆	KNEE LIFTER SHORT BAR
28	124052802	1	抬压曲柄连杆组件	P-BAR LIFTER CRANK LEVER ASSY
29	124052902	1	抬压曲柄连杆销	P-BAR LIFTER CRANK LEVER PIN
30	124053001	1	段螺钉SM6.35×28	SHOULDER SCREW SM6.35×28
31	115072001	1	紧圈	SET SCREW COLLAR
32	014770632	2	固定螺钉SM6.35	SCREW SM6.35

## 12. 供油润滑装置/Lubrication



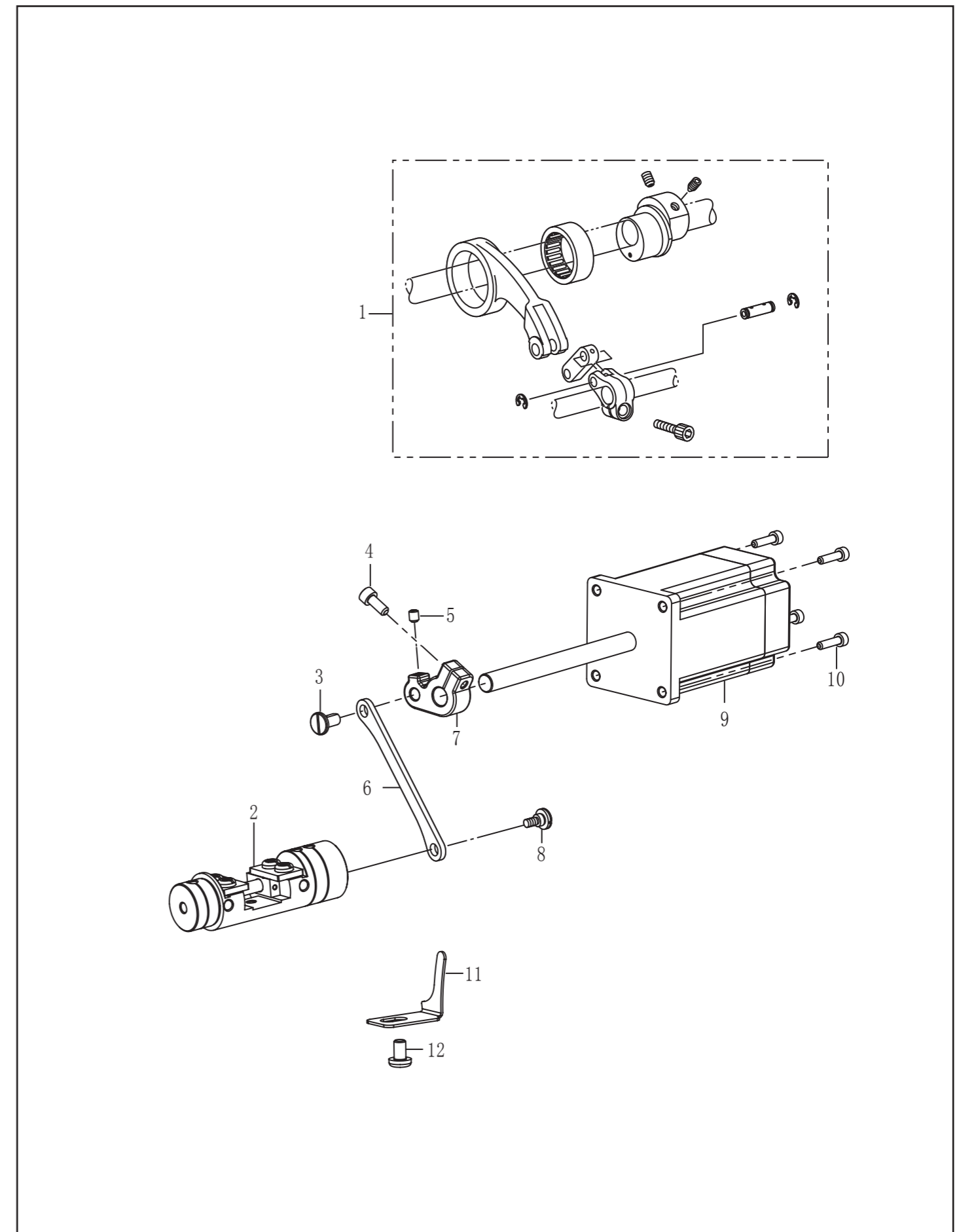
## 10. 旋梭装置/Rotary hook mechanism

序号	图号	数量	名称	NAME OF PARTS
1+	124100101	2	旋梭组件	ROTARY HOOK BOX ASSY
1+	125100101	2	旋梭组件	ROTARY HOOK BOX ASSY
2+	124100201	2	梭芯套组件	GAP ASSY
2+	125100201	2	梭芯套组件	GAP ASSY
3+	124095501	2	梭芯	BOBBIN
3+	125095501	2	梭芯	BOBBIN
4	124095601	2	弹簧	SPRING

## 11. 下轴装置/Lower shaft mechanism

序号	图号	数量	名称	NAME OF PARTS
1	124110101	1	旋梭基座轴套L	ROTARY HOOK BASE BUSH, L
2	124110201	1	下轴	LOWER SHAFT
3	124110301	1	油毡	FELT
4	124110402	1	旋梭基座轴套R	ROTARY HOOK BASE BUSH, R
5	124110501	1	上下偏心轮组件	F-LIFTING ECCENTRIC WHEEL ASSY
6	124110601	1	螺钉M6×0.75	SCREW PAN M6×0.75
7	115024001	1	油封	OIL SEAL
8	124110801	1	下轴中套	
9	115083001	1	柱塞	RUBBER PRESSER
10	115083601	1	柱塞弹簧	RUBBER PRESSER SPRING
11	115083201	1	泵盖螺钉	SCREW
12	124111201	1	轴承套	BALL BEARING BUSH
13	169034401	6	固定螺钉M6×0.75-6	SET SCREW M6×0.75-6
14	115024501	1	轴承6004ZZNR	BALL BEARING, 6004ZZNR
15	124111501	1	同步轮D组件	TIMING PULLEY ASSY, D

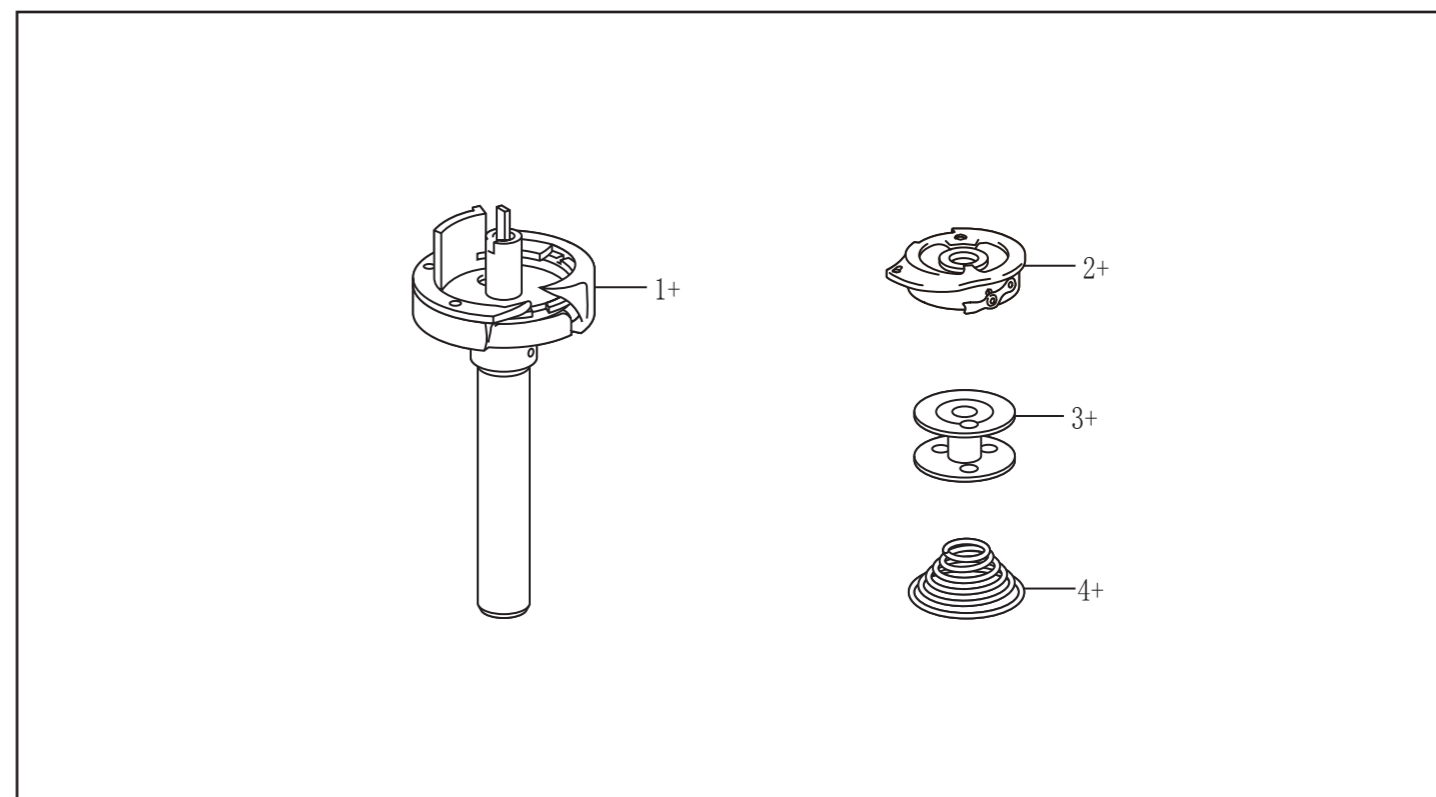
## 6. 送布装置/Feed mechanism



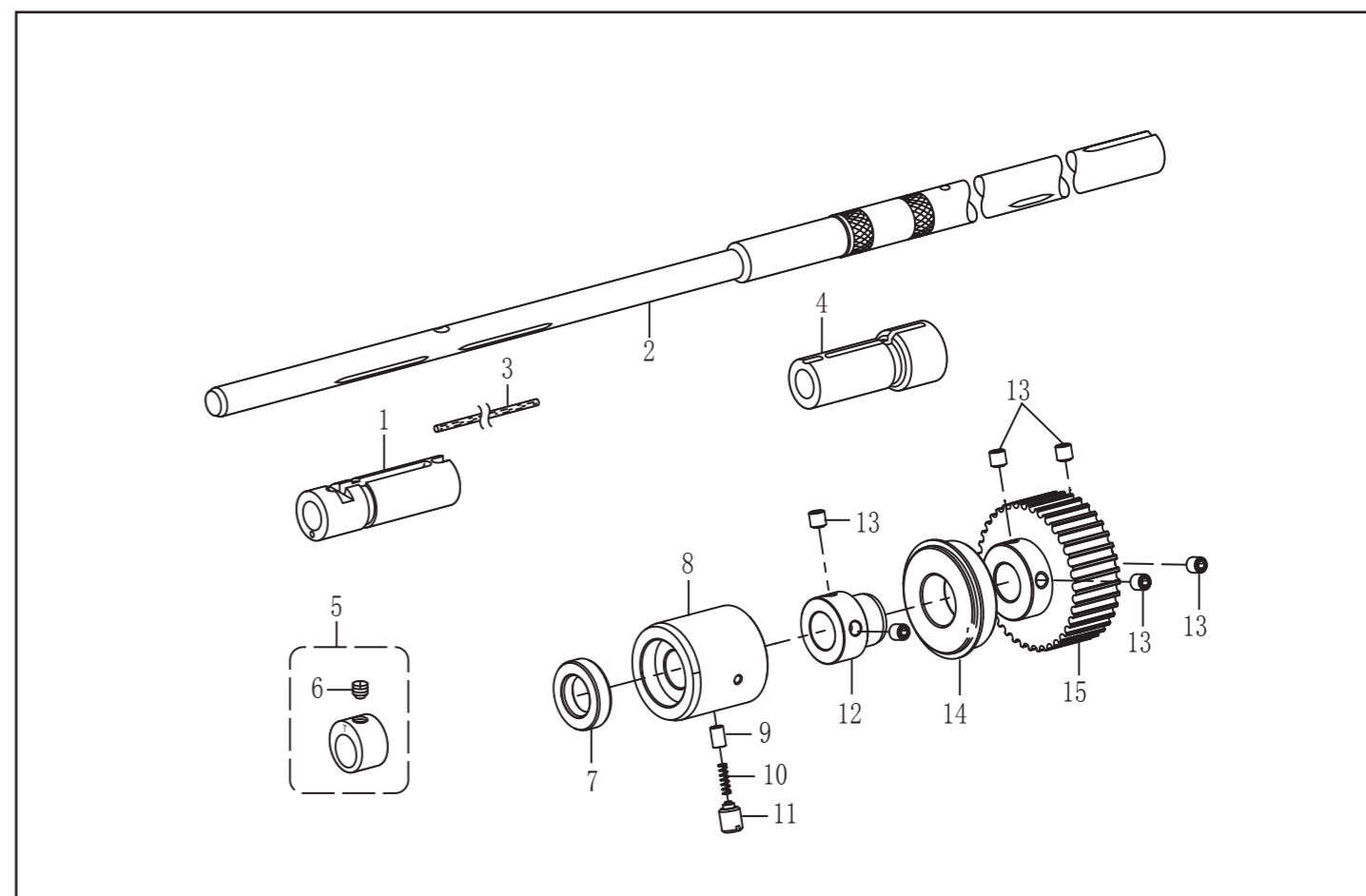
## 6. 送布装置/Feed mechanism

序号	图号	数量	名称	NAME OF PARTS
1	124061601	1	送布大组件	DISTRIBUTION MODULE
2	124061101	1	切换器组件-3	ECCENTRIC SHAFT
3	124061201	1	偏心轴	ECCENTRIC SHAFT
4	018501232	1	螺钉M5×12	SCREW PAN M5×12
5	012500632	1	螺钉M5×6	SCREW PAN M5×6
6	124061301	1	切换器连杆	CONNECTING ROD
7	124061501	1	送料调节曲柄	SHOULDER SCREW M6
8	124061401	1	轴位螺钉M6	FEED REGULATOR
9	124061801	1	倒缝电机	REVERSE SWITCH MOTOR
10	018401632	4	螺钉M4×16	SCREW PAN M4×16
11	124062001	1	切换器定位	STOPPER
12	062500616	1	螺钉M5×6	SCREW PAN M5×6

## 10. 旋梭装置/Rotary hook mechanism



## 11. 下轴装置/Lower shaft mechanism

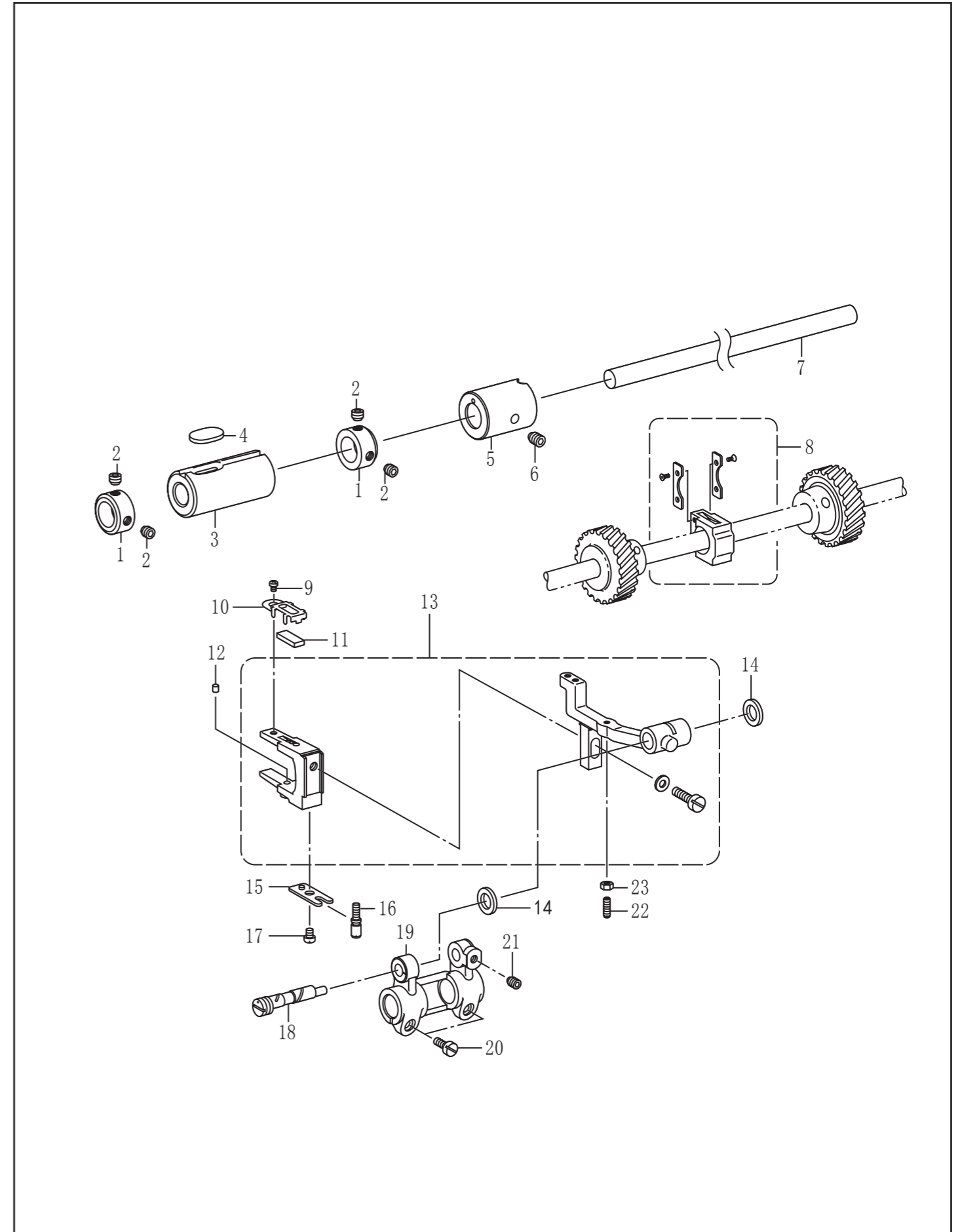




## 9. 旋梭部件/Rotary hook mechanism

序号	图号	数量	名称	NAME OF PARTS
31	124094001	2	齿轮带螺钉	PINION GEAR SCREW ASSY
32	124094101	2	旋梭轴套D	ROTARY HOOK SHAFT BUSH
33	124094302	1	弹簧	SPRING EXTENSION
34	062061016	2	螺钉M6×10	SCREW M6X10
35	124094601	1	调节轴	N-UPPER POSITIONING SHAFT
36	124094701	1	旋梭基座盖FL	ROTARY HOOK BASE COVER FL
37	062401236	4	螺钉M4×12	SCREW M4X12
38	124095002	1	旋梭基座盖R	ROTARY HOOK BASE COVER R
39	124095201	1	旋梭基座盖FR	ROTARY HOOK BASE COVER FR
40	124095301	1	油毡支架DR	FELT DR
41	124095401	1	油毡支架UR	FELT UR
42	124094201	1	调节板	NEEDLE UPPER POSITIONING PLATE
43	124093101	2	垫圈 M6	WASHER M6

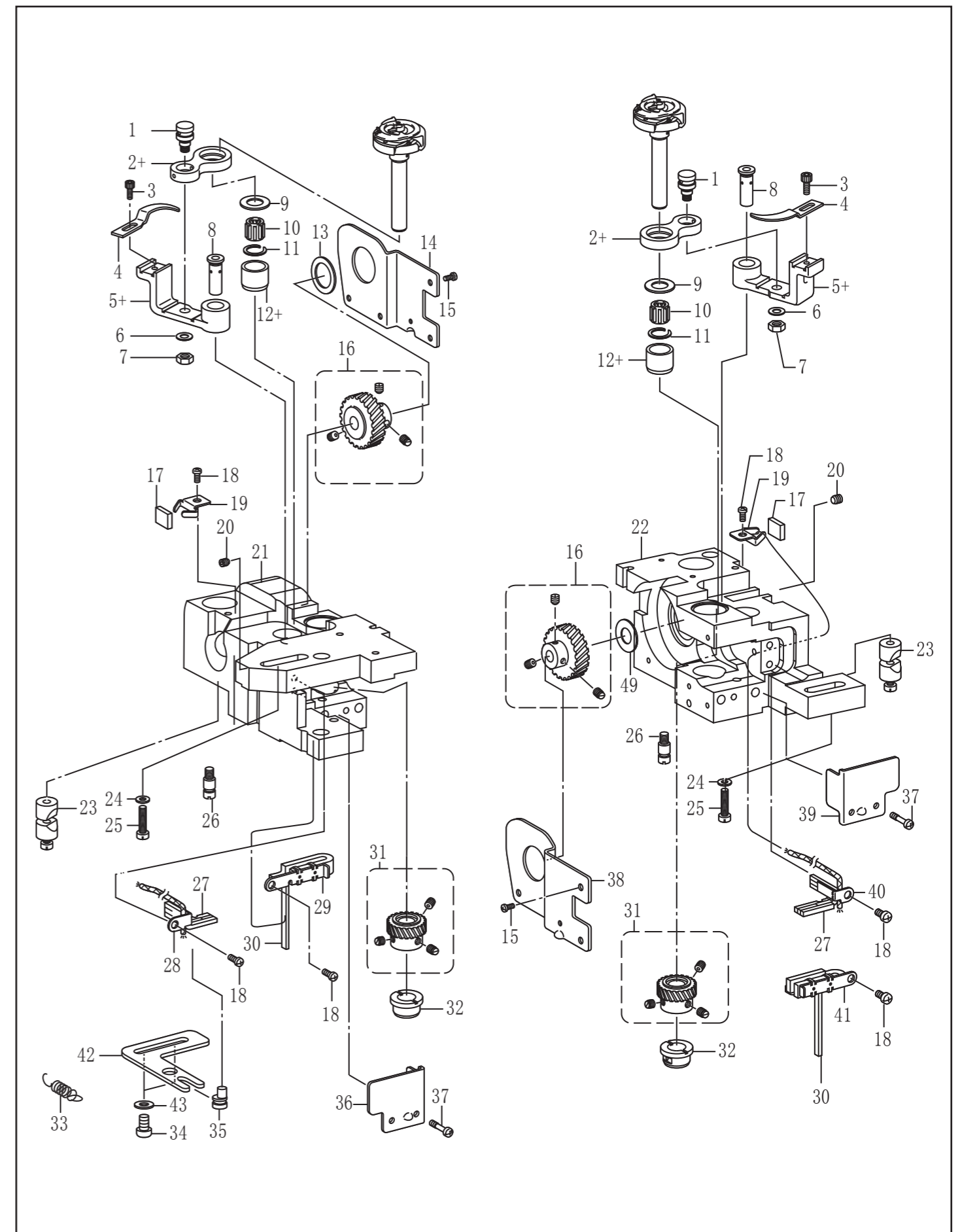
## 7. 送布轴装置/Feed shaft mechanism



## 7. 送布轴装置/Feed shaft mechanism

序号	图号	数量	名称	NAME OF PARTS
1	124070101	2	紧圈	SET SCREW COLLAR
2	169034401	4	固定螺钉M6×0.75-6	SCREW PAN M6×6
3	124070301	1	送布轴套L	BUSH, L: F-ROCKER SHAFT
4	124070401	1	油毡	FELT
5	124070501	1	送布轴套R	FEED ROCKER SHAFT BUSH, R
6	012060636	1	螺钉M6×6	SCREW PAN M6×6
7	124070801	1	送布轴	FEED ROCKER SHAFT
8	124070901	1	滑块组件	FEED BAR SLIDE BLOCK ASSY
9	062300416	1	螺钉M3×4	SCREW PAN M3×4
10	124071201	1	油毡压架	FELT HOLDER
11	124071301	1	油毡	FELT
12	124071401	1	油毡	FELT
13	125071501	1	牙架叉组件TR	FEED BAR TR FORK ASSY
14	124071601	2	轴向垫圈	THRUST RING
15	124071901	1	开叉板	FORKED PLATE
16	124072001	1	调整螺栓	ADJUSTING SCREW
17	062400616	1	螺钉M4×6	SCREW PAN M4×6
18	124072201	1	牙架轴	FEED BAR SHAFT
19	124072301	1	水平送布台臂	FEED ROCKER BASE ARM
20	124072401	2	螺钉M5×12	SCREW PAN M5×12
21	012060636	1	螺钉M6×6	SCREW PAN M6×6
22	124072601	1	螺钉M3.5	SCREW PAN M3.5
23	021350106	1	螺母M3.5	NUT M3.5

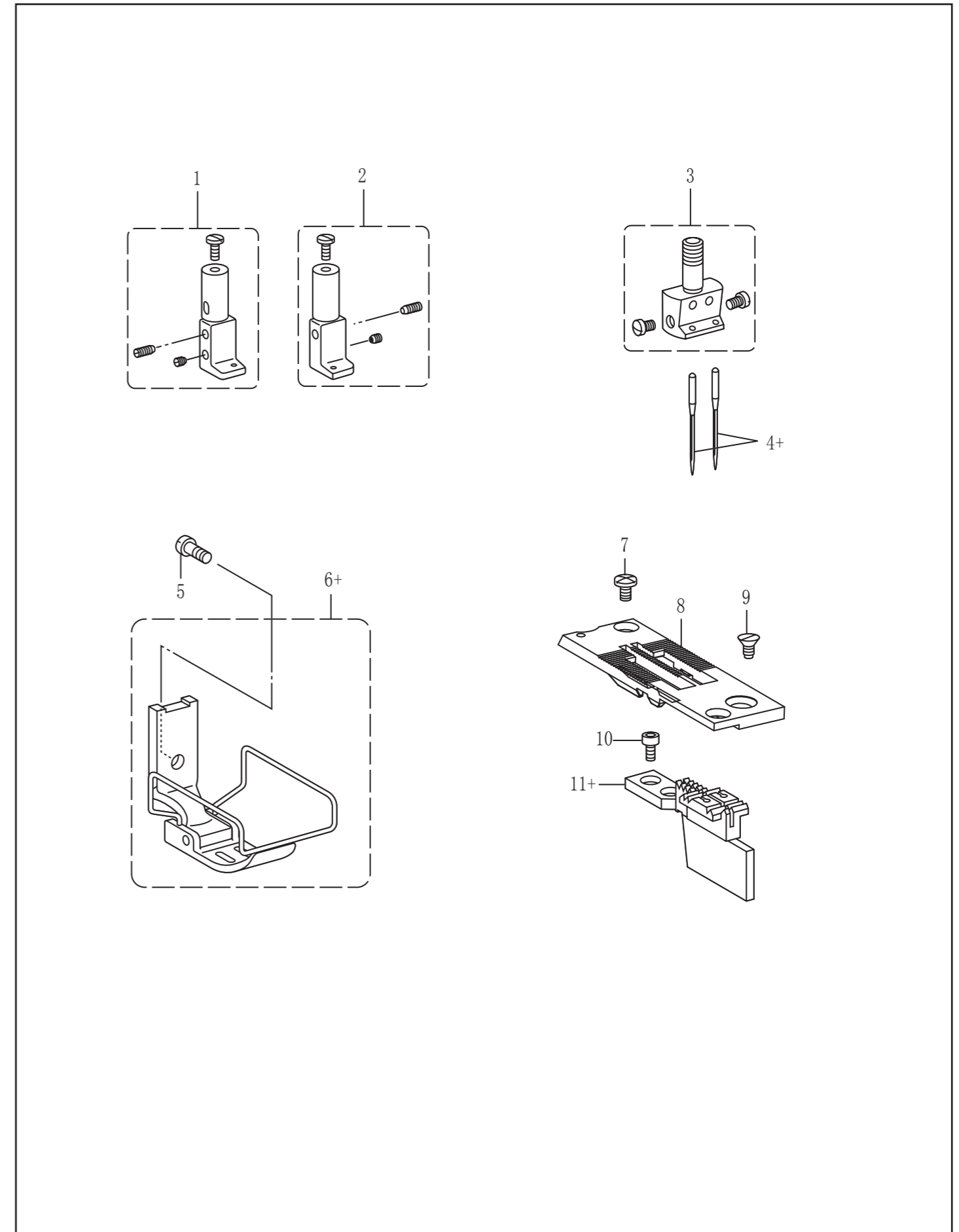
## 9. 旋梭部件/Rotary hook mechanism



## 9. 旋梭部件/Rotary hook mechanism

序号	图号	数量	名称	NAME OF PARTS
1	124090101	2	分线钩连杆轴	SHAFT, O-LINK
2+	124090201	2	分线钩连杆	OPENER LINK
2+	125090201	2	分线钩连杆	OPENER LINK
3	124090301	2	螺钉SM3. 57×40-8	BOLT, SOCKET SM3. 57×40-8
4	124090401	2	分线钩	OPENER
5+	124090501	2	分线钩杆	OPENER LEVER
5+	125090501	2	分线钩杆	OPENER LEVER
6	025050332	2	平垫圈S4. 76	WASHER, PLAN S4. 76
7	021500212	2	螺母M5	NUT3 M5
8	124090801	2	分线钩杆短轴	O-LEVER SHAFT
9	124090901	2	轴向垫圈A<t=1. 2>	THRUST RING, A:1. 2MM<t=1. 2>
10	124091001	2	滚针轴承	NEEDLE BEARING
11	124091101	2	止动圈	RETAINING RING
12+	124091201	2	旋梭轴套U	ROTARY HOOK SHAFT BUSH
12+	125091201	2	旋梭轴套U	ROTARY HOOK SHAFT BUSH
13	124091301	1	垫圈L	THRUST WASHER, L
14	124091401	1	旋梭基座盖L	ROTARY HOOK BASE COVER, L
15	062300516	8	螺钉M3×6	SCREW PAN M3×6
16	124091601	2	螺旋齿轮（带螺钉）	SPIRAL GEAR SCREW ASSY
17	124091801	2	油毡	FELT
18	062400616	6	螺钉M4×6	SCREW PAN M4×6
19	124091901	2	油毡架	FELT SUPPORT
20	012501032	2	螺钉M5×10	SET SCREW M5×10
21	124095701-2	1	左旋梭支架	LEFT-HANDED SHUTTLE BRACKET
22	124095801-2	1	右旋梭支架	RIGHT-HANDED SHUTTLE SUPPORT
23	124092701	2	套管组件	PINCH SLEEVER ASSY
24	124154501	2	垫圈 6	WASHER 6
25	018062532	2	螺钉M6×25	SCREW M6×25
26	124093301	3	定位螺钉	STOPPER SCREW
27	124093701	2	油毡	FELT
28	124093601	1	油毡支架DL	FELT DL
29	124093801	1	油毡支架UL	FELT UL
30	124095901	2	油毡	FELT

## 8. 定规部件/Gauge parts



## 8. 定规部件/Gauge parts

序号	图号	数量	名称	NAME OF PARTS
1	125081601	2	针夹L组件 1/4	NEEDLE CLAMP ASSY L 1/4
2	125081701	2	针夹R组件 1/4	NEEDLE CLAMP ASSY R 1/4
3	124041401	1	针夹组件 1/4	NEEDLE CLAMP ASSY 1/4
4+	115024106	2	机针DP×5 (#14)	NEEDLE DPX5(#14)
4+	115024109	2	机针DP×5 (#18)	NEEDLE DPX5(#18)
5	124080701	1	压脚螺钉M3.5×0.6	SCREW M3.5×0.6
6+	124080801	1	压脚组件	PRESSER FOOT ASSY
6+	125080801	1	压脚组件-7	PRESSER FOOT ASSY, 7
7	124080901	1	螺钉SM4.37	SCREW SM4.37
8	125081001	1	针板-5	NEEDLE PLATE 5
9	124081101	1	螺钉SM4.37	SCREW SM4.37
10	124081201	2	送布牙螺钉SM3.18	SCREW SM3.18×44-7
11+	125081302	1	送布牙2.0 (245II)	FEED DOG 2.0
11+	125081303	1	送布牙2.4 (275II)	FEED DOG 2.4

## 9. 旋梭部件/Rotary hook mechanism

