

DUMA



浙江杜马缝纫机股份有限公司
ZHEJIANGDUMASEWINGMACHINE CO.,LTD.

地址：浙江省台州市椒江区机场南路58号
电话：0576-89086969 传真：0576-89086999
网址：www.cnduma.com



DM1969II

超高速多轴联动电脑平缝机

Super high speed Multi-axes moving Lockstitch Sewing Machine

DUMA 杜马

未来，我已来！



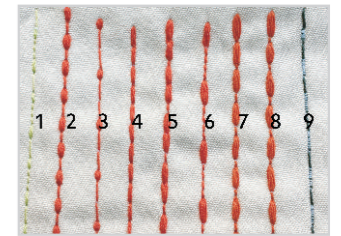
产品特点/Product Features

花样缝:

由于步进马达控制, 1969II可以自己设定产生D1-D8, 8种不同线迹。

Special Stitch Pattern:

controled by step moter system ,1969ii machine it can design8 type stitch patterns by your idea,from D1-D8

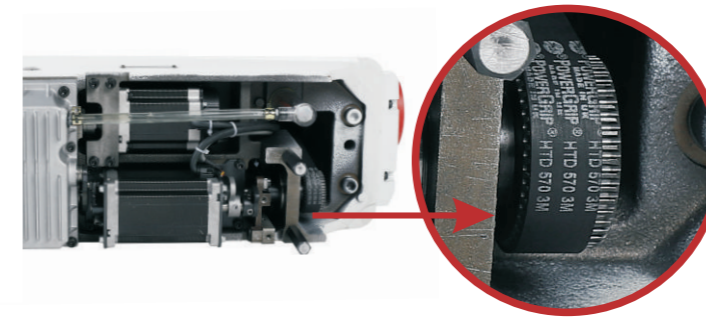


无油高速:

同步皮带联动上下机构,车缝速度可达至5000rpm./min.

Supper high speed dry head machine :

Adopt Belt connect top and bottom movingsystem Max speed can reached 5000rpm./min.

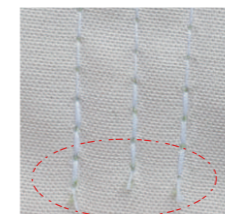


步进马达双向驱动技术 (专利技术):

一个马达完成切线和抬压脚动作。

Step motor bidirectional driven technology(patent) :

one step motor control trimming and pressing foot lifter work



短线头:

用剪线凸轮驱动的双圆刀剪线机构,可在机针正下完成剪线,缝切后的线头最短可达3MM,可有效减少工人剪线的工作量

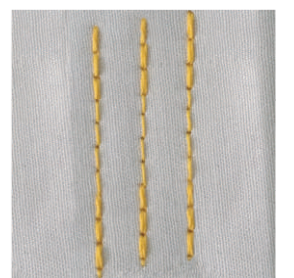
Adopt trimming cam control double round knife trimmer system, us realizes after trimmer the thread less than 2mm, effectively duce manual trimming workload.

高品质的加固缝线迹:

采用步进马达控制的送料机构,可以实现精准的送料行程,不管针距设定大小,都可以实现针迹重合的加固缝;

Reverse sewing one by one

step motor control the feeding motion,it can achieve precise feed stroke ,then realized high-quality reverse sewing.



电子脚靠:

不改变工人的操作习惯,实现轻松抬压脚;

Electronic knee control:

It easy to lift the presser foot and no change any worer sewing habit.



1

触摸屏操作盒:
采用7寸液晶屏,图像清晰,方便操作亮度可调,节能省电。

Touch Display BOX:
Use big size color LCD screen, the image clearly, convenient operation and adjust the parameter

2

USB接口:
手机充电

USB:
for mobile power

3

四键按钮:
从下往上功能:倒缝,密缝,1/2补针,1/4补针

Double button LED light:
Easy to mutual switch from second stitch to compensation stitch at the buttonreverse sewing

Model	Needle	Stitch Range	Stitch Length	Star	Star	Star	Star	Star	Star	Star	Star	Star	Star
DM1969II M	(DBx1)#7 ~ #16	0-5	6-12	★	★	★	-	★	-	★	5000	680x290x640	45.5kg
DM1969II H	(DPx5)#18 ~ #24	0-7	6-12	★	★	★	-	-	★	★	4500	680x290x640	45.5kg
DM1969II N	(DPx5)#18 ~ #24	0-5	6-12	★	★	★	-	★	-	★	5000	680x290x640	45.5kg